



GRIFFIN-SPALDING COUNTY AIRPORT 6A2

DOWNTOWN GRIFFIN



GRIFFIN-SPALDING COUNTY AIRPORT

6A2

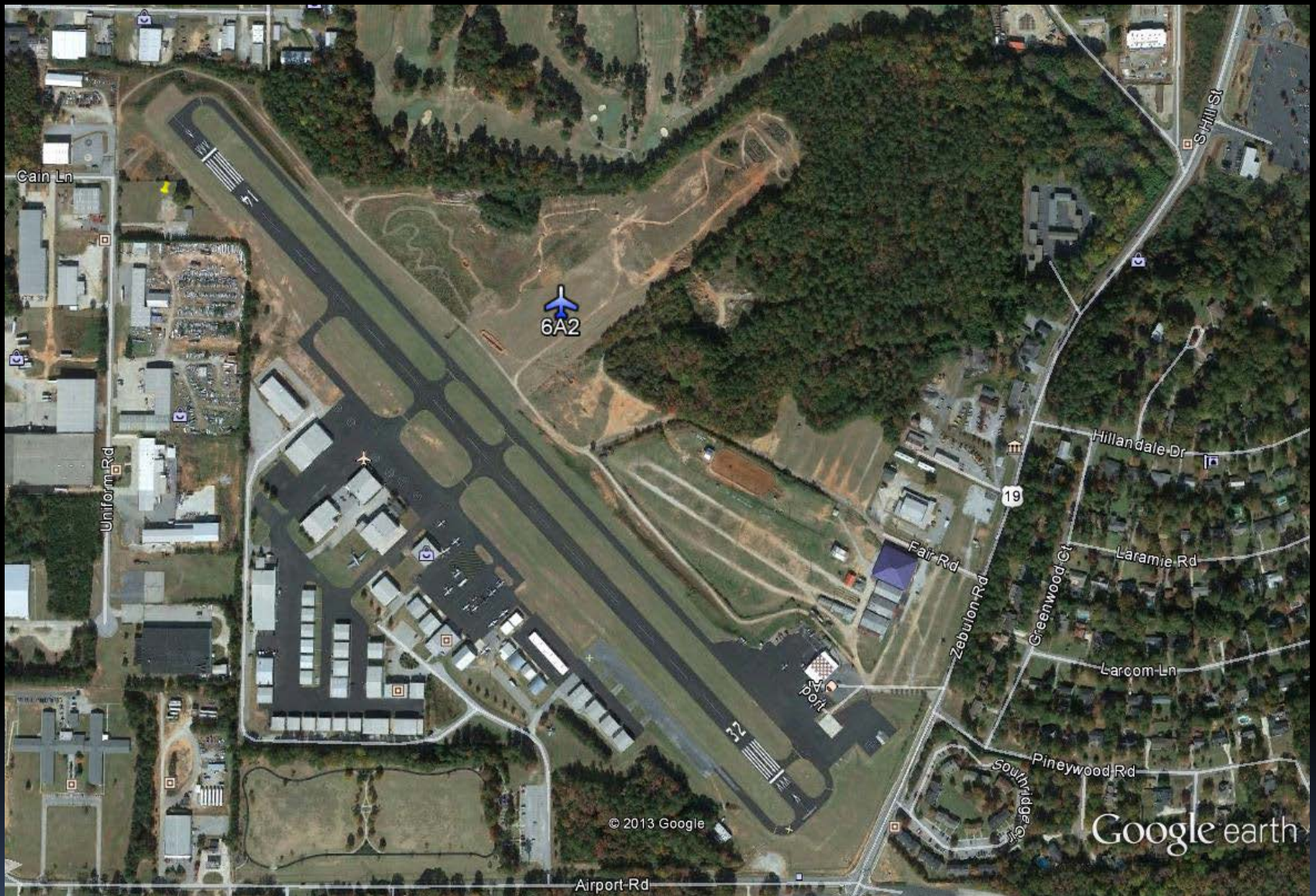
BUILT IN 1939

74 YEARS OLD



GRIFFIN-SPALDING COUNTY AIRPORT 6A2

PAID FOR WITH 95% FED \$\$



GRIFFIN-SPALDING COUNTY AIRPORT

6A2



GRIFFIN-SPALDING COUNTY AIRPORT

6A2

200 ACRES

TODAY - 3701 PAVED RUNWAY

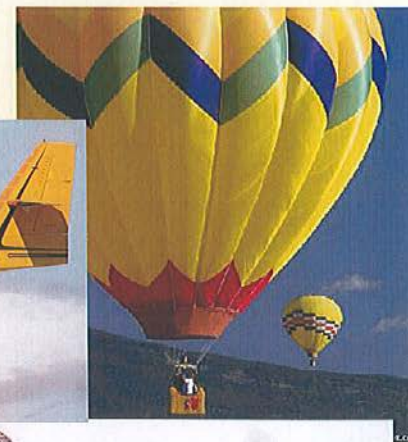
GENERAL AVIATION

It's Working for America

General Aviation is:

Everything, but - - -

1. Military
2. Commercial
(passenger/freight)



GRIFFIN-SPALDING COUNTY AIRPORT
6A2

Airfield Business



GRIFFIN-SPALDING COUNTY AIRPORT
6A2



GRIFFIN-SPALDING COUNTY AIRPORT
6A2 AIRPARK BUSINESSES. TENANT LEASES, HANGER
RENTS & TIE-DOWNS GENERATE \$240,000.00 ANNUALLY



GRIFFIN-SPALDING COUNTY AIRPORT 6A2

54 HANGERS & TENANTS



GRIFFIN-SPALDING COUNTY AIRPORT 6A2

ALEXANDER TECHNICAL AIR..COMPOSITES



GRIFFIN-SPALDING COUNTY AIRPORT
6A2 **PRECISION AVIONICS, DONS DREAM**
MACHINES & TURBINE SOLUTIONS



GRIFFIN-SPALDING COUNTY AIRPORT
6A2 **PAINT SHOP PREP &**
TURBINE SOLUTIONS CUSTOM INTERIORS



GRIFFIN-SPALDING COUNTY AIRPORT
6A2 PAINTING, ENGINE MX, INTERIORS,
EXTERIORS & AVIONICS -- A ONE STOP SHOP



GRIFFIN-SPALDING COUNTY AIRPORT 6A2

AIR METHODS LIFE FLIGHT



GRIFFIN-SPALDING COUNTY AIRPORT
6A2 **MAINTENANCE SHOPS**
AIR WRENCH



GRIFFIN-SPALDING COUNTY AIRPORT
6A2 **PAINT SHOP**
ADVANCED AIRCRAFT REFINISHERS



GRIFFIN-SPALDING COUNTY AIRPORT
6A2 **OPPORTUNITIES**
TV & FILM INDUSTRY X4

Still on the Field

- Adv Aircraft Refinishers
- Air Wrench
- Air Methods Life Flight
- Alexander Technical
- Civil Air Patrol
- Conley Aeronautics
- Don's Dream Machine
- Global Air / Atl Air Salvage
- Fly Boys Instruction
- Lance Toland & Associates
- Morgan & Company*
- Precision Avionics
- Turbine Solutions
- Whitworth Construction

Gone

- Air Charters Inc.
- Bob Long Aircraft Sales
- Gardner Aviation
- Aircraft Spruce
- GA Aircraft Interiors
- Low Pass Aviation
- Phoenix Air Care
- Southern Safety
- Trans National Airways
- Aeropaint II w/sub
- Christian Air Ministry

GRIFFIN-SPALDING COUNTY AIRPORT
6A2

WORRISOME TRENDS

GDOT Statewide Airport Economic Study

Griffin Airport is Ranked 10th
Out of 95 Georgia GA Airports

170 Employees
(3 & ½ are City Employees)

7 Million Dollars in Payroll

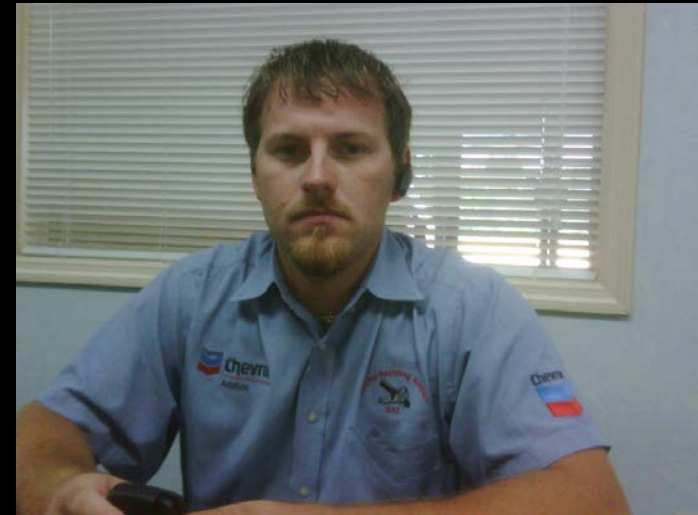
21 Million Dollars in LOCAL
Economic Impact

GRIFFIN-SPALDING COUNTY AIRPORT

6A2

WHAT YOU MAY NOT KNOW

Who We Are



GRIFFIN-SPALDING COUNTY AIRPORT
6A2



Services Provided by GSA

GRIFFIN-SPALDING COUNTY AIRPORT
6A2



GRIFFIN-SPALDING COUNTY AIRPORT 6A2

AIRCRAFT TUG & PULL OUT / PUSH BACK



GRIFFIN-SPALDING COUNTY AIRPORT 6A2

TUG SERVICES



GRIFFIN-SPALDING COUNTY AIRPORT
6A2 FUEL QUANTITIES JET-A 14,000 GAL &
24HR 365 DAYS AV GAS 100LL 15,000 GAL



GRIFFIN-SPALDING COUNTY AIRPORT
6A2 FULL & SELF SERVICE FUELING
OPERATIONS GENERATE \$300,000.00 ANNUALLY



GRIFFIN-SPALDING COUNTY AIRPORT
6A2 **ALL WEATHER SUPPORT**
FULL SERVICE AIRCRAFT FUELING



GRIFFIN-SPALDING COUNTY AIRPORT 6A2

MILITARY SUPPORT



GRIFFIN-SPALDING COUNTY AIRPORT
6A2 **CALL OUT**
FULL SERVICE FUELING



GRIFFIN-SPALDING COUNTY AIRPORT 6A2

COMMUNITY VISITORS



GRIFFIN-SPALDING COUNTY AIRPORT 6A2

FULL SERVICE FUELING



GRIFFIN-SPALDING COUNTY AIRPORT
6A2 **AIRFIELD MAINTENANCE**
NAVIGATIONAL AIDS & LIGHTING





GRIFFIN-SPALDING COUNTY AIRPORT 6A2

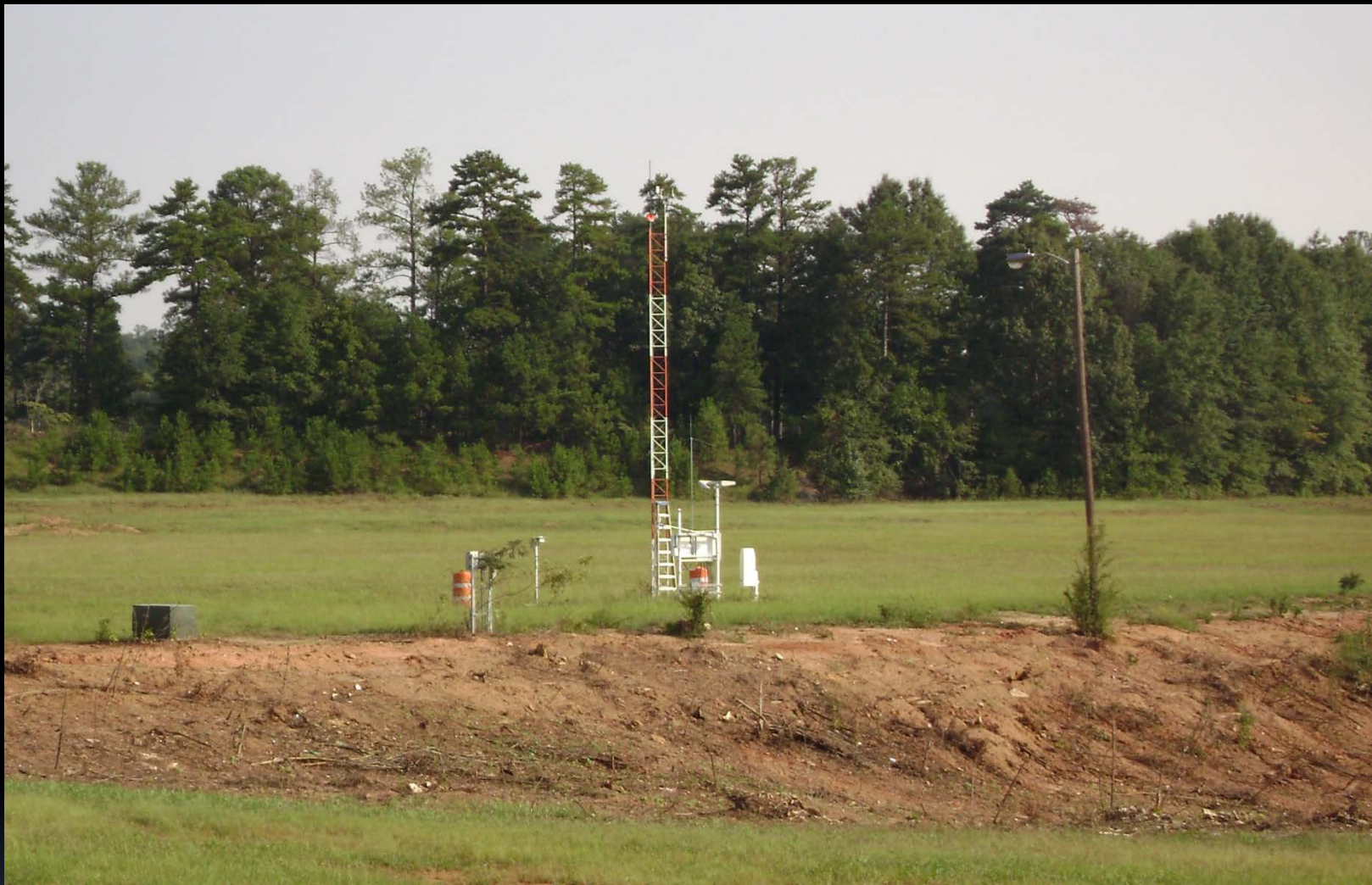
AIRFIELD MAINTENANCE



GRIFFIN-SPALDING COUNTY AIRPORT
6A2 **AIRFIELD MAINTENANCE**
PRECISION APPROACH PATHWAY INDICATOR (PAPIS)



GRIFFIN-SPALDING COUNTY AIRPORT 6A2 AIRFIELD MAINTENANCE FIELD EQUIPMENT



GRIFFIN-SPALDING COUNTY AIRPORT
6A2 **AWOS - AIRFIELD MAINTENANCE**
770 227 3934



GRIFFIN-SPALDING COUNTY AIRPORT
6A2 BUSINESS VISITORS
MU-2



GRIFFIN-SPALDING COUNTY AIRPORT
6A2 **BUSINESS VISITORS**
KING AIR & MU-2



GRIFFIN-SPALDING COUNTY AIRPORT

6A2

GA FLEET MIX

SMALL OR VLJ AIRCRAFT



GRIFFIN-SPALDING COUNTY AIRPORT
6A2 **BASED CUSTOMERS**
90 AIRCRAFT



Obstacles & Challenges

GRIFFIN-SPALDING COUNTY AIRPORT
6A2



GRIFFIN-SPALDING COUNTY AIRPORT

6A2

INFRASTRUCTURE - PAVEMENT MAINTENANCE



GRIFFIN-SPALDING COUNTY AIRPORT

6A2 DESTINATIONS, BARNSTORMERS PEACH STATE AIRPORT'S RESTAURANT



GRIFFIN-SPALDING COUNTY AIRPORT
6A2 **LAND LOCKED**
200 FT DISPLACED THRESHOLDS



GRIFFIN-SPALDING COUNTY AIRPORT
6A2 HWY 19 / HILL STREET / ZEBULON RD
APPROACH RUNWAY 32



GRIFFIN-SPALDING COUNTY AIRPORT 6A2

32 END AND ROSES SHOPPING CENTER



GRIFFIN-SPALDING COUNTY AIRPORT
6A2 **BUSINESS & WAREHOUSES**
APPROACH RWY 14

Airport FY 12 Summary

- Budget Amount = \$821,617.00
- Budgeted Amount without Depreciation =**\$704,437.00**
- Operational Deficit = Total Rev (without ad valorem) – Total Expenditure (without depreciation)
 - \$130,002.00
- Actual Tax Payer Burden = Total Rev (with ad valorem) – Total Exp (without depreciation)
 - \$20,002.00 roughly divided by number of Spalding County Citiz (64033) = \$0.31 per person
- Airport Expenditures
 - Personnel Services\$184,896.00
 - Interfund & Interdepartmental Charges =\$146,363.00
 - Capital Projects\$40,650.00
 - Operations & Maintenance\$418,038.00
 - Total Expenditures with Depreciation.....\$789,947.00
 - Total Expenditures without Depreciation.....**\$672,767.00**
- Airport Revenues
 - Fuel Sales.....\$286,053.00
 - Leases, Rents & Agreements.....\$237,472.00
 - Service.....\$317.00
 - Sales Tax (Fuel Sales & Services).....\$18,923.00
 - Total Rev not including ad valorem.....**\$542,765.00**
 - Total Rev with ad valorem...(\$110,000.00).....**\$652,765.00**

Airport Budget FY 12 Summary

Total Revenues.....	\$542,765.00
Total Expenditures	- <u>\$789,947.00</u>
	- \$247,182.00
Depreciation.....	<u>\$117,180.00</u>*
Operational Deficit.....	- \$130,002.00
Airport Ad Valorem Tax.....	<u>\$110,000.00</u> **
Burden to Tax Payer.....	- \$20,002.00

Actual Tax Payer Burden \$20,002.00

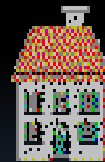
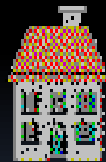
Roughly divided by number of Spalding County Citiz (64033) = \$0.31 per person.

\$821,617.00 budgeted for the Airport, the Airport Expenditures (including Depreciation) came in \$31,670.00 under budget.

* Not actual operational cost

** Not currently counted as airport generated revenue

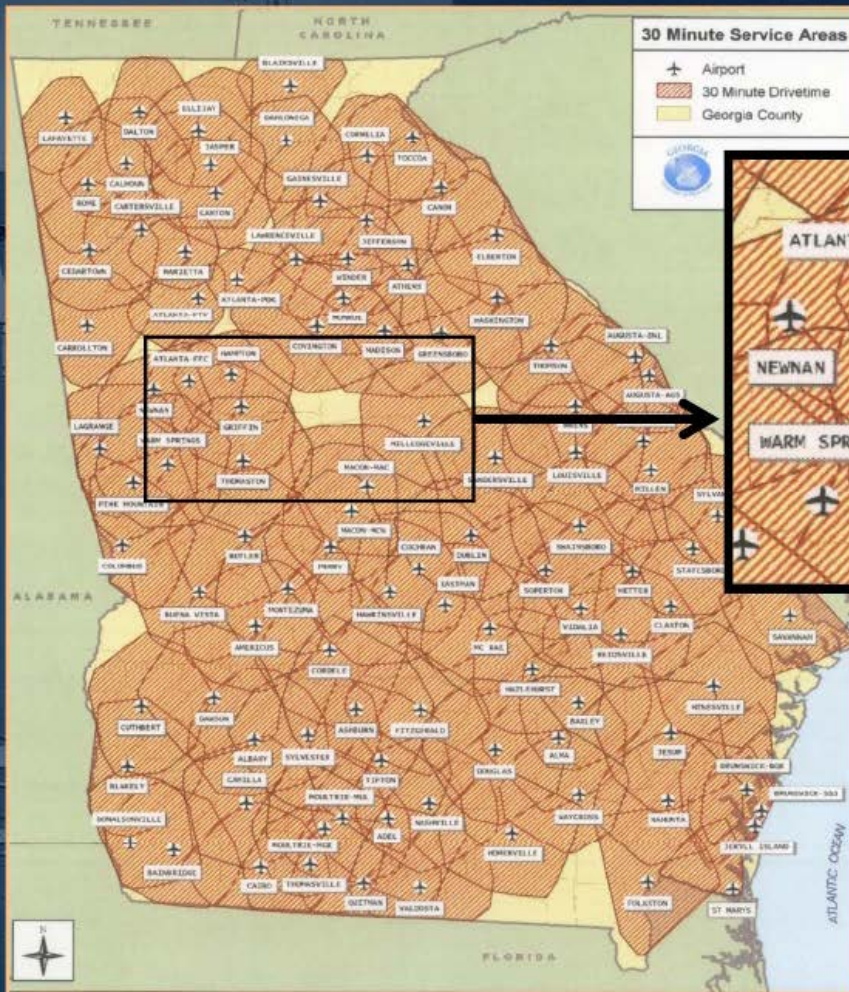
Maybe we should move ?



GRIFFIN-SPALDING COUNTY AIRPORT
6A2

- Provides Guidelines for Airport Development Statewide
- Classifies Griffin-Spalding Co. Airport as “Business Airport of Local Impact”
- Recommends Minimum 5,000 Foot Runway
- Recommends Extending Airport’s Runway by at Least 1,299 Feet
- Identifies Region East of Spalding County as Underserved by General Aviation Airports

GRIFFIN-SPALDING COUNTY AIRPORT 6A2

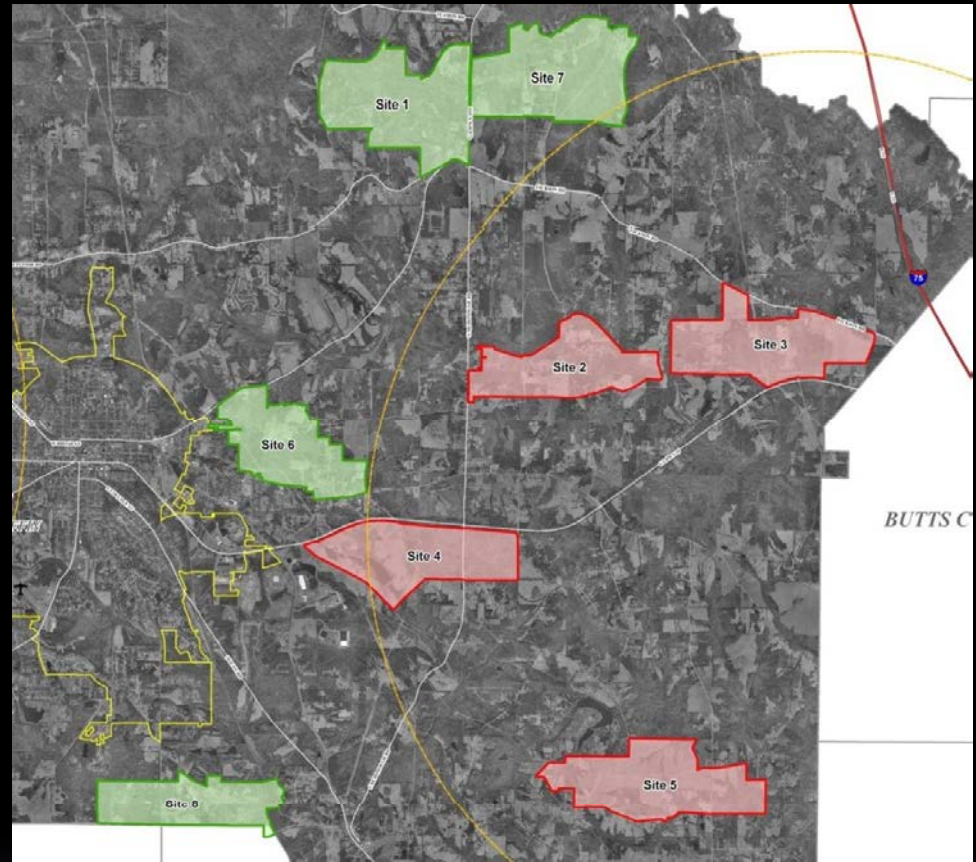


GRIFFIN-SPALDING COUNTY AIRPORT 6A2 GAP IN GEORGIA AIRPORT SYSTEM PLAN EAST OF GRIFFIN

Eight Sites Ranked

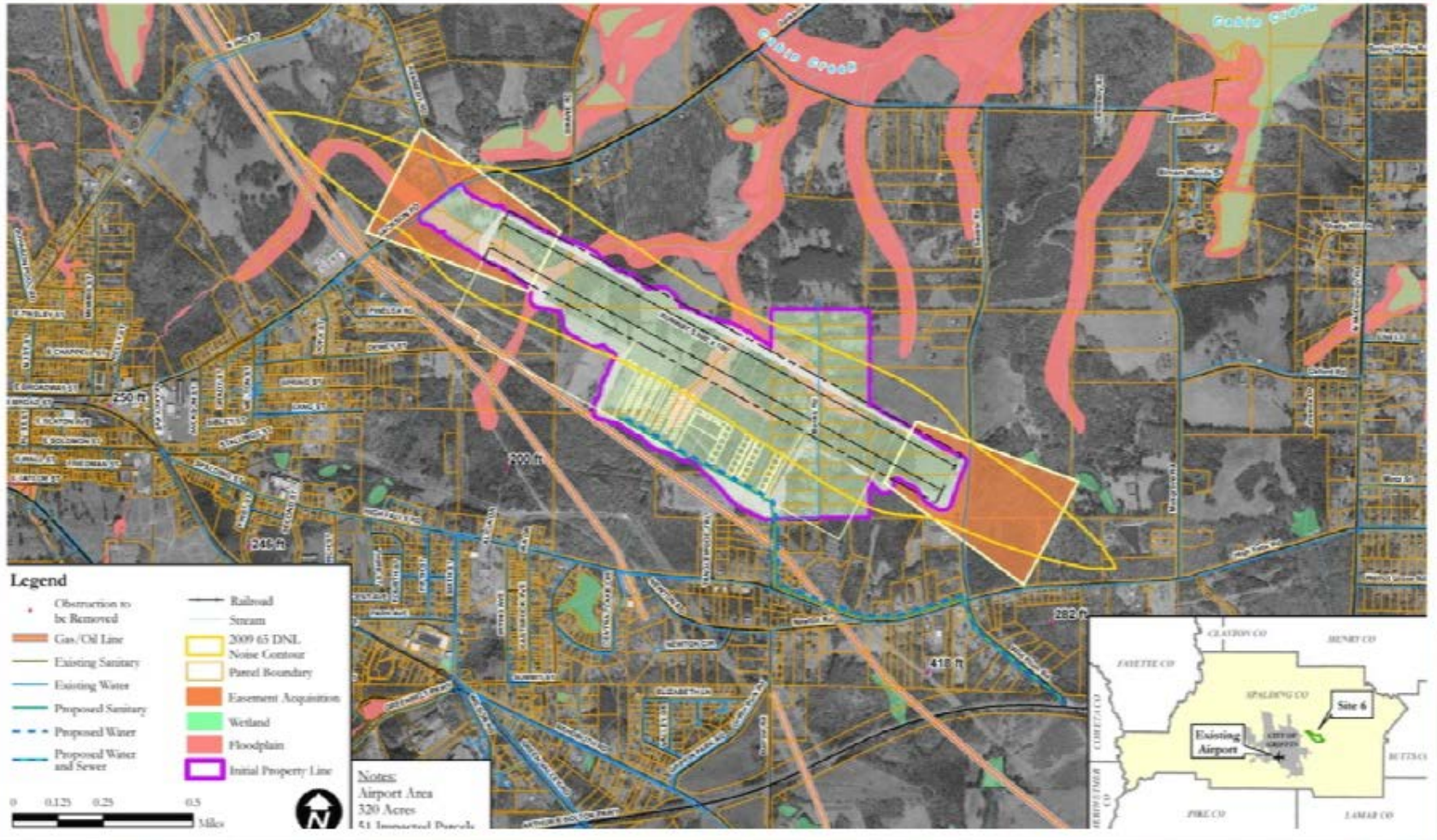
According To:

1. Infrastructure & Land Acquisition
2. Environmental Considerations
3. Constructability
4. Operational Capability
5. Industrial Compatibility



GRIFFIN-SPALDING COUNTY AIRPORT
6A2

S³.... SITE SELECTION SURVEY

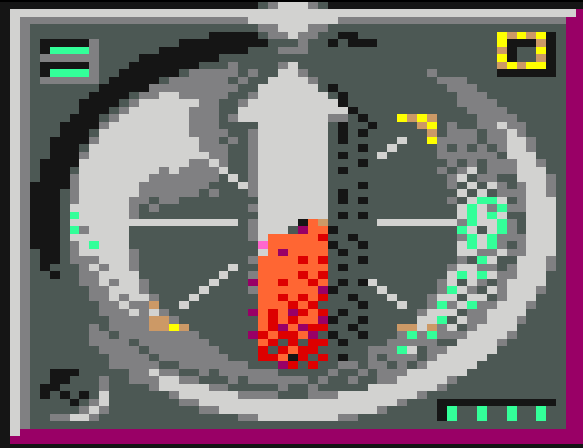


GRIFFIN-SPALDING COUNTY AIRPORT

6A2

PRIMARY SITE

Where Are We Now ?



GRIFFIN-SPALDING COUNTY AIRPORT
6A2

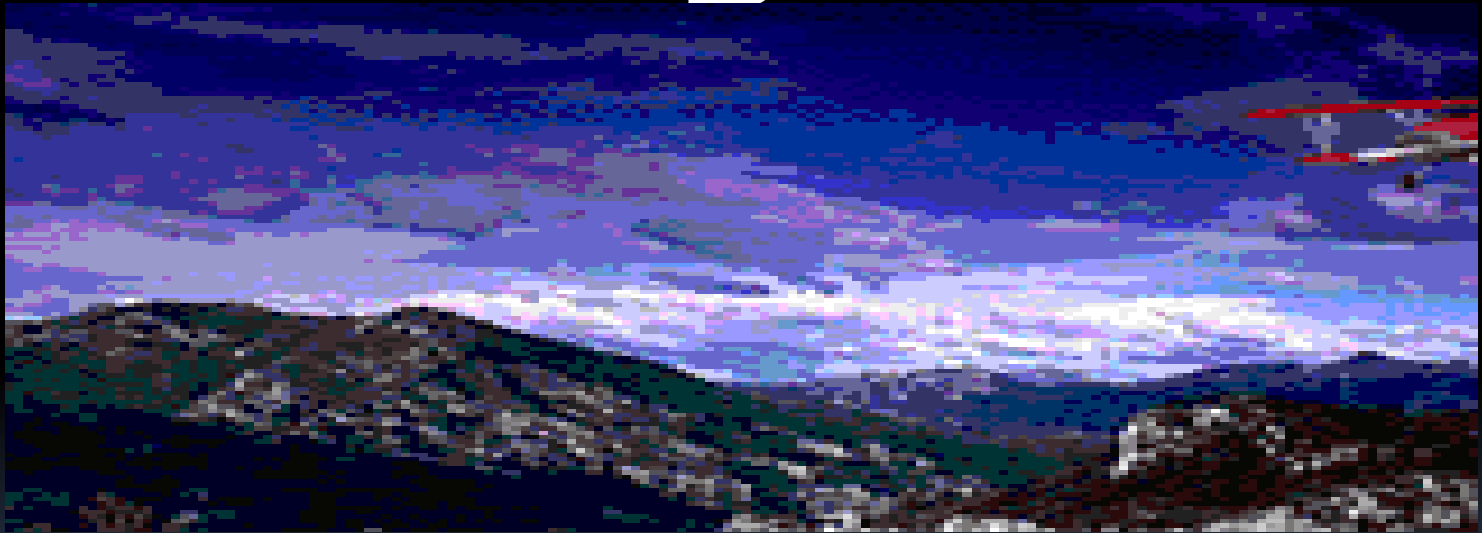
- 1. Site Selection – Completed**
- 2. Environmental Assessment – Completed**
- 3. Airport Layout Plan – Initiated**
- 4. Land Acquisition – Awaiting Funding Source**
- 5. Permitting - 2014**
- 6. Construction – 2015 through 2018**
- 7. Transition – 2017 - 2019**
- 8. Close Existing Airport - 2019**

GRIFFIN-SPALDING COUNTY AIRPORT

6A2

NEW AIRPORT TIME-LINE

What do we get ?



GRIFFIN-SPALDING COUNTY AIRPORT
6A2

JOBS

Engineering
Architecture
Plumbing
Hauling
Asphalt
Grading



Construction
Electrical
Masonry
Concrete
Drywall
Welding

GRIFFIN-SPALDING COUNTY AIRPORT
6A2 OPPORTUNITY

Built to FAA Safety Standards

- Better Instrument Approach Minimums
- Improved Safety Areas & Protection Zones

Greater Access for Corporate Aircraft

- Current GSA has “NO” Corporate Based Aircraft
JETS ARE WHERE THE MONEY IS.....

Future Expansion Potential

- Ample Developable Property
- Compatible Land Use

Economic Development Opportunities

“The general aviation airports across the country that are used by business aircraft are key economic engines, boosting jobs, local investment and economic activity in communities across the country.” – **NBAA 2010 Fact Book**


GRIFFIN-SPALDING COUNTY AIRPORT

6A2

WHY

PDK Airport Enterprise Fund

- **Financially Self-Sufficient**
- General Tax Funds **Not Required**
- “Capitalist Enterprise” w/in the County
- \$10.4+ Million FY 2013 Budget
 - \$ 6.4 Reserve
 - \$ 2.7 Operating
 - **\$ 1.3 Contribution (covers own local match)**
 - \$ 5.1 Million Projected Revenue
- Over 225 Leases: big – small; simple – complex;
old – new; short & long
- Staff = 21 Employees
 - 5 Administrative Staff
 - 7 Security Guards
 - 9 Maintenance Personnel



Why not just
expand where
you are now ?

GRIFFIN-SPALDING COUNTY AIRPORT
6A2

**Current Airport
(as is)**

**Current Airport
(expanded)**

**Proposed
(New Airport)**

**Runway
Length**

3701

4750

5500 – 6000

**Pavement
Strength**

30,000 lbs

30,000 lbs

75,000 lbs

**Design
Aircraft**



General

50%

65%

94%

**Aviation
Fleet %**

COST

\$5 million

\$80 million

\$60 million

GRIFFIN-SPALDING COUNTY AIRPORT

6A2

OPPORTUNITY

Why Don't We Just Close the Airport?

- Pay Back the FAA for 20 Years of FAA Grants
- Pay Back the FAA 90% - 95% of the Current Market Value
- Estimated cost to be \$20 - \$25 Million Dollars
All Local Dollars



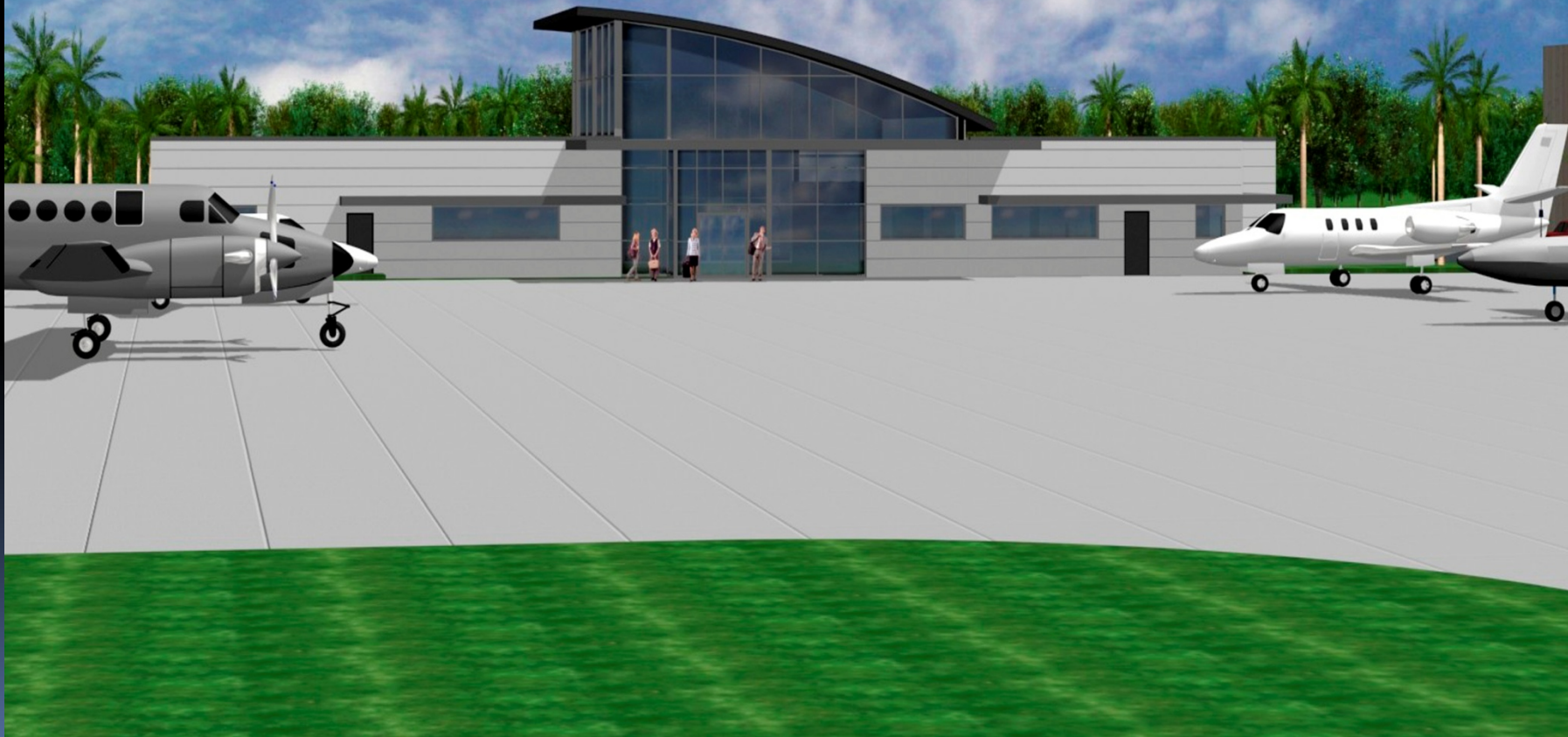


FAA



GRIFFIN-SPALDING COUNTY AIRPORT
6A2 AIP

Atlanta Airport South at Griffin-Spalding





GRIFFIN-SPALDING COUNTY AIRPORT
6A2

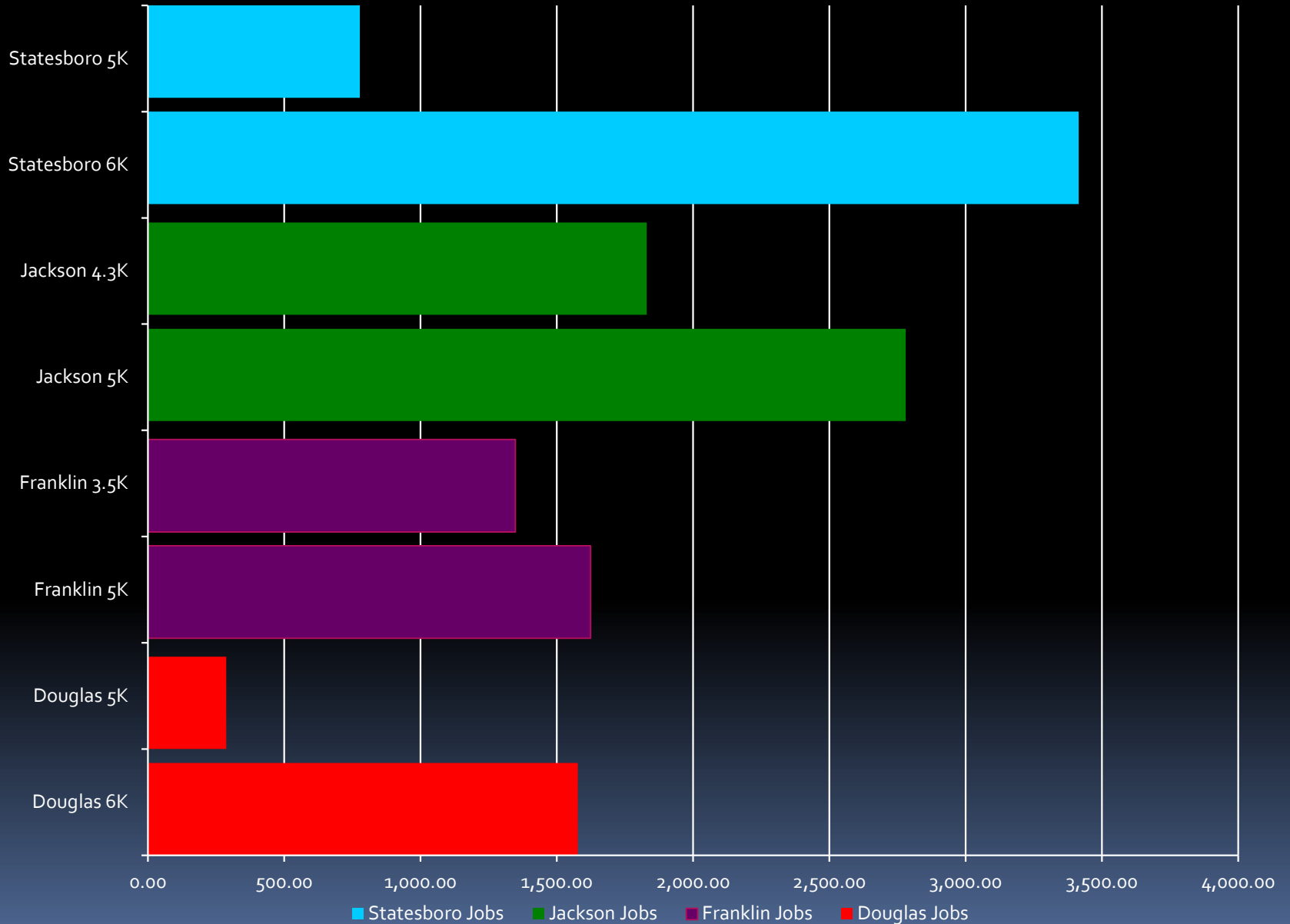
FFC PEACHTREE CITY

Aircraft Property Tax Analysis - Griffin-Spalding Airport

Tax Analysis

	Appraised Value	Assessed Value	Griffin's	Spalding Co	School System	Total Annual
			8.638 Mills	13.88 Mills	18.80 Mills	Property Tax Revenue
FFC						
1 Falcon Jet	\$ 24,950,000.00	\$ 9,980,000.00	\$ 86,207.24	\$ 138,522.40	\$ 187,624.00	\$ 412,353.64
1 Citation Jet	\$ 19,825,904.00	\$ 7,930,361.60	\$ 68,502.46	\$ 110,073.42	\$ 149,090.80	\$ 327,666.68
1 Falcon Jet	\$ 17,950,000.00	\$ 7,180,000.00	\$ 62,020.84	\$ 99,658.40	\$ 134,984.00	\$ 296,663.24
1 Citation X	\$ 15,495,000.00	\$ 6,198,000.00	\$ 53,538.32	\$ 86,028.24	\$ 116,522.40	\$ 256,088.96
Total Property Taxes			\$ 270,268.87	\$ 434,282.46	\$ 588,221.20	\$ 1,292,772.52
Griffin Spalding Airport	\$ 2,017,500.00	\$ 807,000.00	\$ 6,970.87	\$ 11,201.16	\$ 15,171.60	\$ 33,343.63
Griffin Spalding Hangers	\$ 4,459,379.00	\$ 1,783,751.60	\$ 15,408.05	\$ 24,758.47	\$ 33,534.53	\$ 73,701.05
Total Property Taxes	\$ 6,476,879.00		\$ 22,378.91	\$ 35,959.63	\$ 48,706.13	\$ 107,044.67

GDOT Case Studies



GDOT Case Studies

- In the 4 Airports a total of 5153 jobs were created after the airports runways were lengthened
- Of the 4 airports discussed 1288 is the average number of jobs created.

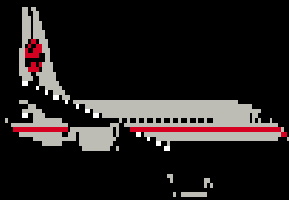
% of jobs per category

34 % Manufacturing
22 % Processing Plants
16 % Construction
14 % Transportation
12 % Retail
2 % Other

Average # of jobs per category

262 Manufacturing
176 Processing Plants
126 Construction
115 Transportation
100 Retail
12 Other

Questions



GRIFFIN-SPALDING COUNTY AIRPORT
6A2