



Growing, **TOGETHER**

Popular Annual  
Financial Report  
Fiscal Year 2013-2014

City of Griffin  
Griffin, Georgia

# Sense of Community



# Table of Contents



Financial Report Message	4
Vision, Mission, Values	5
Quick Facts	6
Location	7
Commissioners	8
Organizational Chart	9
Awards & Recognition	10
Financial Information	12-21
Component Units	22-25
Purpose of Financial Report	26
Contact Information	27

The Complete Annual Budget and Comprehensive Annual Financial Report are available at City Hall and the City's website [www.cityofgriffin.com](http://www.cityofgriffin.com).

# Financial Report Message

We are pleased to present the City of Griffin's Popular Annual Financial Report (PAFR) for the fiscal year ended June 30, 2014. This is the City's eighth PAFR, and is formulated as an easy to read version of the City's Comprehensive Annual Financial Report (CAFR) that we publish on a yearly basis.

The Comprehensive Annual Financial Report (CAFR) is a detailed account of the City's financial statements, notes, schedules, and statistics. The CAFR was prepared in conformance with Generally Accepted Accounting Principles (GAAP) and was audited by Mauldin, Jenkins, Certified Public Accountants, LLC, 439 Mulberry Street, Post Office Box 1877, Macon Georgia 31202-1877.

The CAFR received an unqualified opinion. A copy of our CAFR can be found on the City's website under Departments, Administrative Services, Finance, Finance Reports

<http://www.cityofgriffin.com/Departments/AdministrativeServices/Finance/FinanceReports/PopularAnnualFinancialReports.aspx>.

The Popular Annual Financial Report (PAFR) provides citizens with an overview of the City's revenues, expenditures, and general information, in a simplified interpretation of the CAFR. The PAFR is prepared by the Department of Administrative Services, Finance and Accounting staff and is not obligated to be audited under GAAP rules.

Thank you for your interest in the City of Griffin's government and its functions. Please feel free to comment or offer suggestions on the PAFR to Markus Schwab, CPA/CITP/CGMA, Chief Financial Officer, email [mschwab@cityofgriffin.com](mailto:mschwab@cityofgriffin.com).

Respectfully submitted,

*Kenny Smith*  
City Manager



# Vision, Mission, Values

## VISION

The City of Griffin shall be a model of excellence in local government; and a safe, well-planned community with equal opportunity for all.

## MISSION

In partnership with our community, the mission of the City of Griffin is to protect and enhance the quality of life by providing a high level of service in an efficient and responsive manner for all the citizens.

## VALUES

- We believe in honest, open, and democratic government.
- We are dedicated to the highest ideals of honor and integrity in order to merit the respect, trust, and confidence of the citizens of Griffin.
- We believe our primary responsibility is to those who live, work, visit, or otherwise come in contact with our City. We are committed to enhancing the quality of life by providing exemplary services.
- We believe that the employees of the City are its most important resource and through them, we will accomplish our mission and vision. We will support the employees with dignity, respect, and fairness.
- We believe it is important to listen to our citizens and be sensitive and responsive to their needs.
- We believe that proper planning, training, and teamwork will fulfill our mission and vision for the future of the City of Griffin.

# Griffin Quick Facts



Services: Police, Fire, Electric, Water, Sewer, Storm Drainage, Streets, Solid Waste, Airport, Parks, Recreation, Planning and Economic Development

Form of Government: Board of Commissioners/Chairperson/City Manager

Governing Body: 6 District and 1 at-Large Commissioners are elected to four year terms

Population – (2012 est.): 23,643

Number of Households – 2014: 8,554

Median Age – (2012 Citi-Data): 33.8

Median Household Income – (2012 Citi-Data): \$30,237

Planning Area (square miles): 14

Incorporated (square miles): 14

Acres of Parks: 190

Operating Budget – 2014: \$109M

Employees: 460

2014 Operating Millage Rate (City): 8.400

2014 Total Operating Millage Rate (State, City, County, & School): 44.030

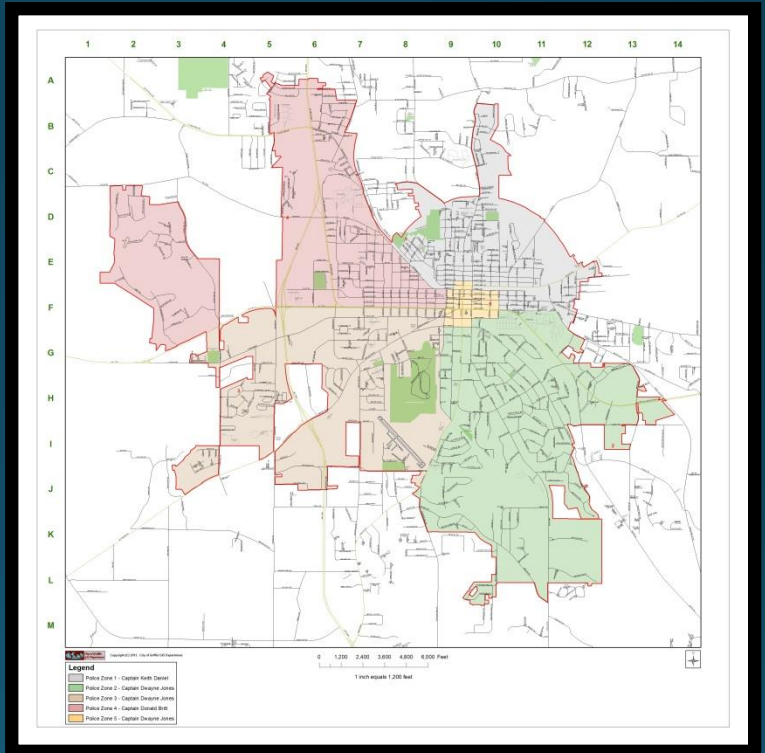
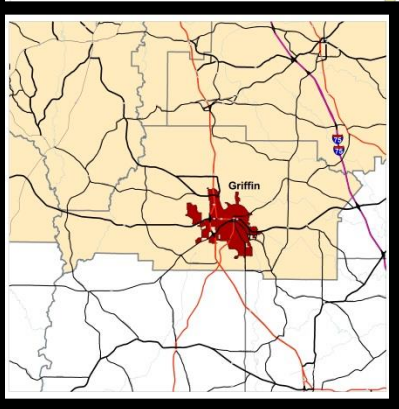
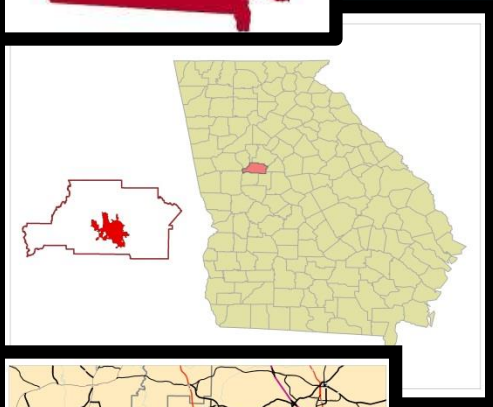
2014 Sales and Use Tax Rate: 7%

Incorporated: 1840

# Location



The City of Griffin is located in Spalding County along Highway 16 just west of I-75 with easy access to Griffin-Spalding Municipal Airport.



<5 Minutes to Griffin-Spalding Municipal Airport  
15 Minutes north to Atlanta Motor Speedway  
45 Minutes south to Macon, Georgia  
50 Minutes north to Hartsfield-Jackson Atlanta Airport

# Meet the Commissioners



Chairman  
Ryan McLemore,  
Commissioner District 3



Cora Flowers,  
Commissioner District 2



Cynthia Reid Ward,  
Commissioner District 1



Rodney McCord,  
Commissioner District 6



Richard Morrow,  
Commissioner District 5



Pro-tem  
Joanne Todd,  
Commissioner District 4



Douglas S. Hollberg,  
Commissioner  
City At-Large



# Organizational Chart



# AWARDS



Government Finance Officers Association

## Award for Outstanding Achievement in Popular Annual Financial Reporting

Presented to

**City of Griffin  
Georgia**

For its Annual  
Financial Report  
for the Fiscal Year Ended

**June 30, 2013**

Executive Director/CEO

Government Finance Officers Association (GFOA) Award for Excellence in Financial Reporting for Comprehensive Annual Financial Report (CAFR) – 2013, 2012, 2011, 2010, 2009, 2008, 2007, 2006, 2005, and 2004

GFOA Award for Outstanding Achievement in Popular Financial Reporting (PAFR) – 2013, 2012, 2011, 2010, 2009, 2008, 2007, and 2006



# Something for Everyone



# Financial Information

The Statement of Net Position reflects a strong and healthy net financial position for the City as of June 30, 2014. Assets of the City exceeded liabilities by \$125 million (not including deferred outflows). Total assets increased by \$5 million and the City's liabilities decreased by \$-2 million, largely from a focus on debt reduction.

## Statement of Net Position as of June 30<sup>th</sup>

*(in thousands of dollars... '000s)*

	2014	2013	2012	2011	2010
Current and other assets	\$ 72,744	\$ 68,676	\$ 58,386	\$ 52,100	\$ 45,253
Capital assets	135,064	134,347	133,650	135,821	133,992
<b>Total Assets</b>	<b>207,808</b>	<b>203,023</b>	<b>192,036</b>	<b>187,921</b>	<b>179,245</b>
Deferred outflows of resources	1,971	2,199	-0-	-0-	-0-
Other liabilities	11,155	10,814	9,067	10,620	10,117
Long-term liabilities outstanding	72,098	74,461	73,582	75,624	77,986
<b>Total Liabilities</b>	<b>83,253</b>	<b>85,275</b>	<b>82,649</b>	<b>86,244</b>	<b>88,103</b>
<b>Net position:</b>					
Net investment in capital assets	67,276	63,193	63,637	-0-	-0-
Restricted	12,210	14,611	4,840	-0-	-0-
Unrestricted	47,040	42,142	4,091	-0-	-0-
<b>Total net position</b>	<b>\$ 126,526</b>	<b>\$ 119,946</b>	<b>\$ 109,387</b>	<b>\$ 101,677</b>	<b>\$ 91,142</b>



# Financial Information

The City's Statement of Changes in Net Position reflects all the financial activity for the City during the fiscal year ended June 30, 2014. This statement presents information to show how the City's net position changed during the year as a result of financial activity (i.e. revenues and expenses). This is a summarized version of the more detailed statement found in the City's complete Comprehensive Annual Financial Report.

## Statement of Changes in Net Position for the Fiscal Year Ended June 30<sup>th</sup>

*(in thousands of dollars... '000s)*

	2014	2013	2012	2011	2010
Revenues	\$ 98,055	\$ 102,313	\$ 93,876	\$ 96,298	\$ 90,763
Less: expenses	88,323	91,111	86,166	85,763	80,433
Special item:					
Transfer Assets to Airport Authority	-3,153	0	0	0	0
Increase (decrease) in net assets	6,579	11,202	7,710	10,535	10,330
Net position, beginning as restated	119,947	108,745	101,678	91,143	80,813
<b>Net position, end of year</b>	<b>\$ 126,526</b>	<b>\$ 119,947</b>	<b>\$ 109,388</b>	<b>\$ 101,678</b>	<b>\$ 91,143</b>

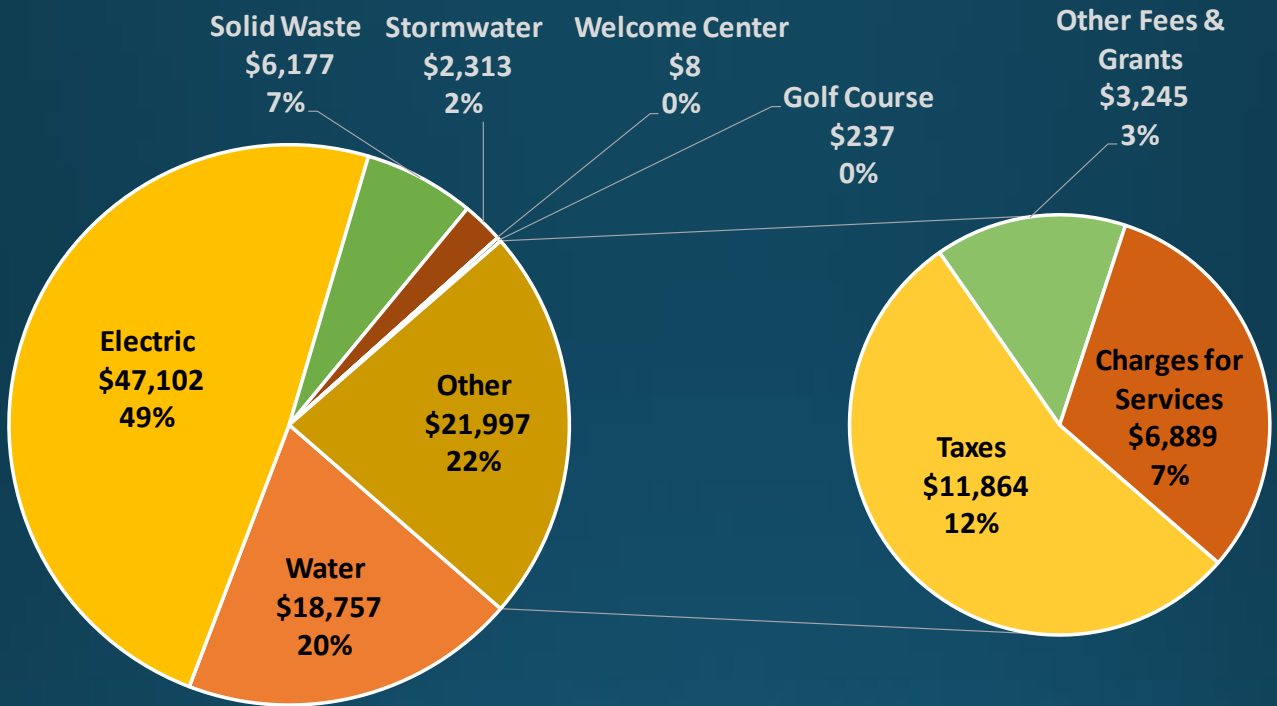
This statement shows that the City's change net position increased each year for the past five years. This reflects a strong fiscal mindset and stewardship in areas that fund future capital improvements. While revenues decreased \$ 4.3 million from 2013, expenditures decreased \$ 2.8 million. The City also transferred \$ 3.2 million in assets to the Griffin-Spalding County Airport Authority.

EXCLUDES COMPONENT UNIT revenue of \$1.134 million and expense of \$1.128 million.

# Financial Information

## REVENUES

(in thousands)

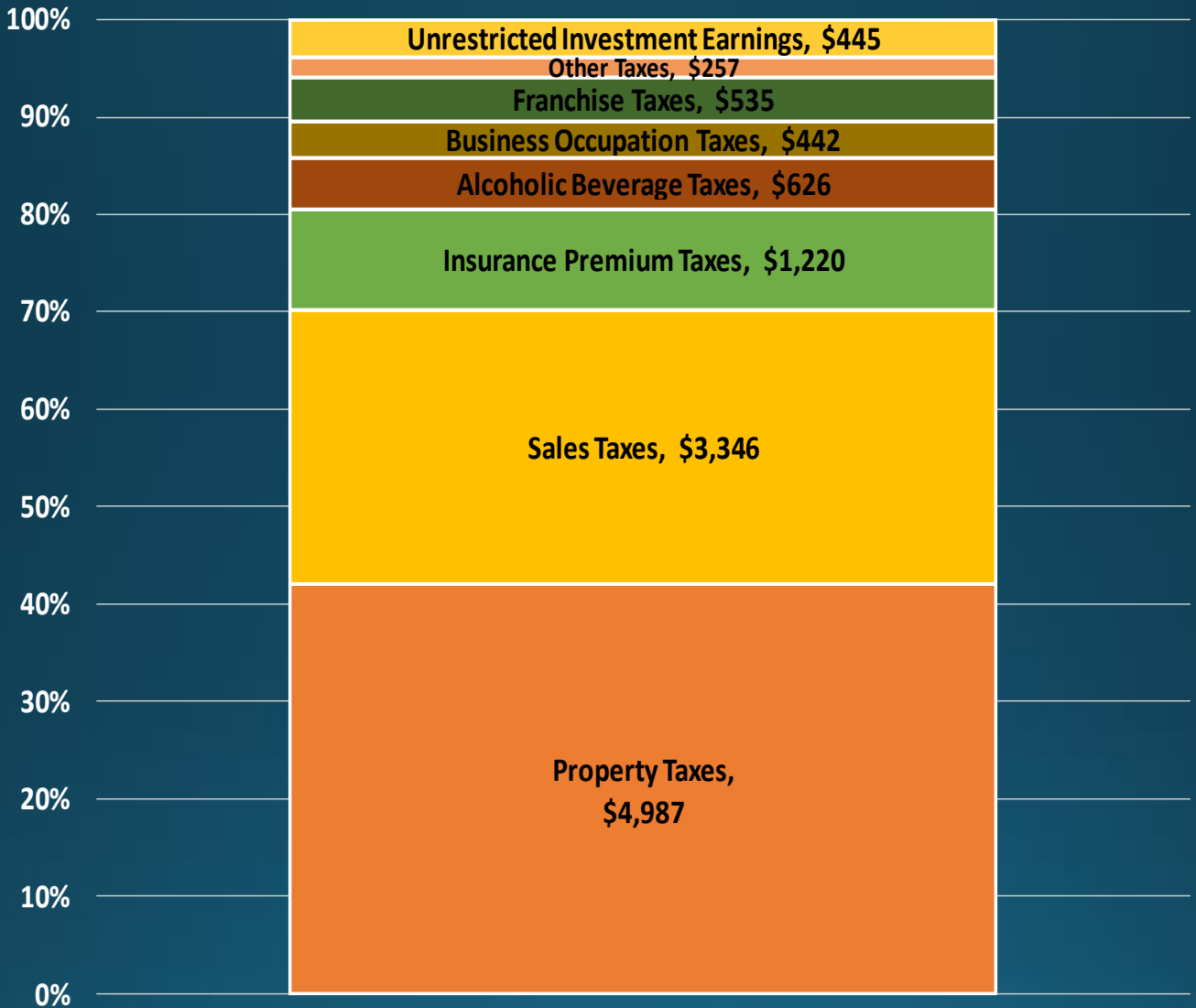


Data comes from governmental activities reported in the government-wide statements. Comprehensive Annual Financial Report 2014 page 14.

# Financial Information

## GOVERNMENTAL REVENUES

(in thousands)



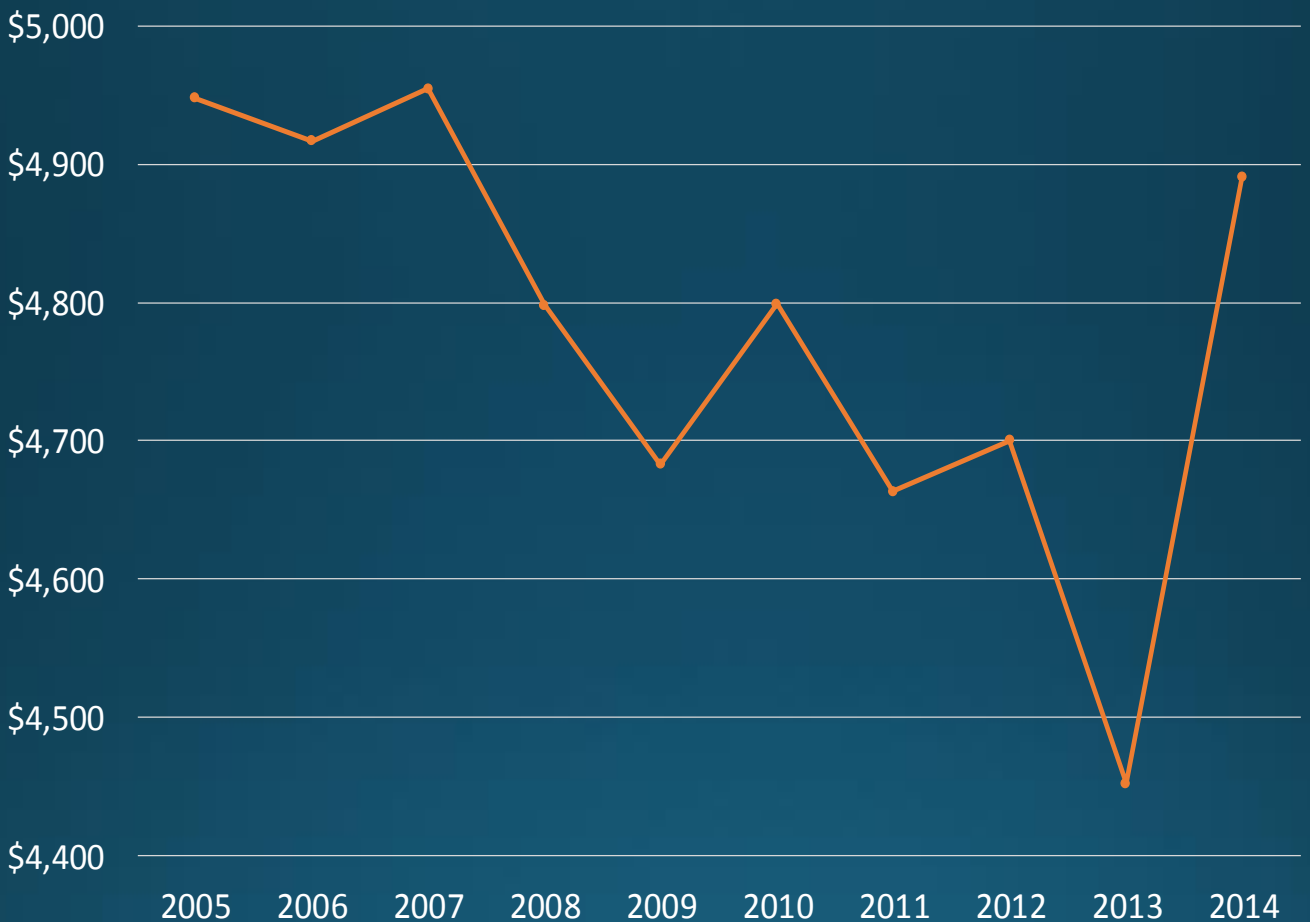
Data comes from governmental activities reported in the government-wide statements. Comprehensive Annual Financial Report 2014 page 14.

# Financial Information

## PROPERTY TAX REVENUES

(in thousands)

### History by Fiscal Year



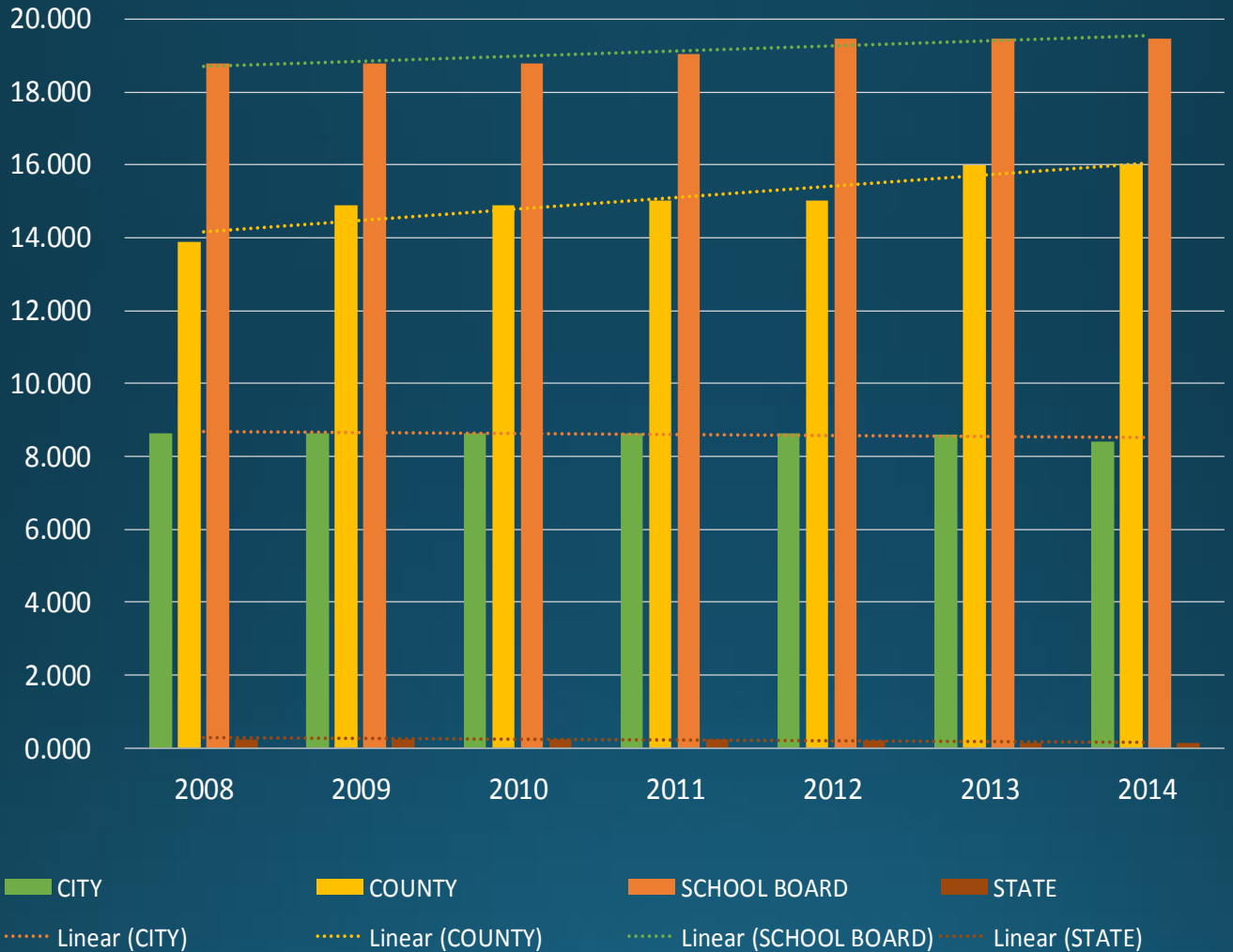
Data comes from Statistical Section, page 104, of the Comprehensive Annual Financial Report 2014.



# Financial Information

## PROPERTY TAX MILLAGE RATES

(in thousands)

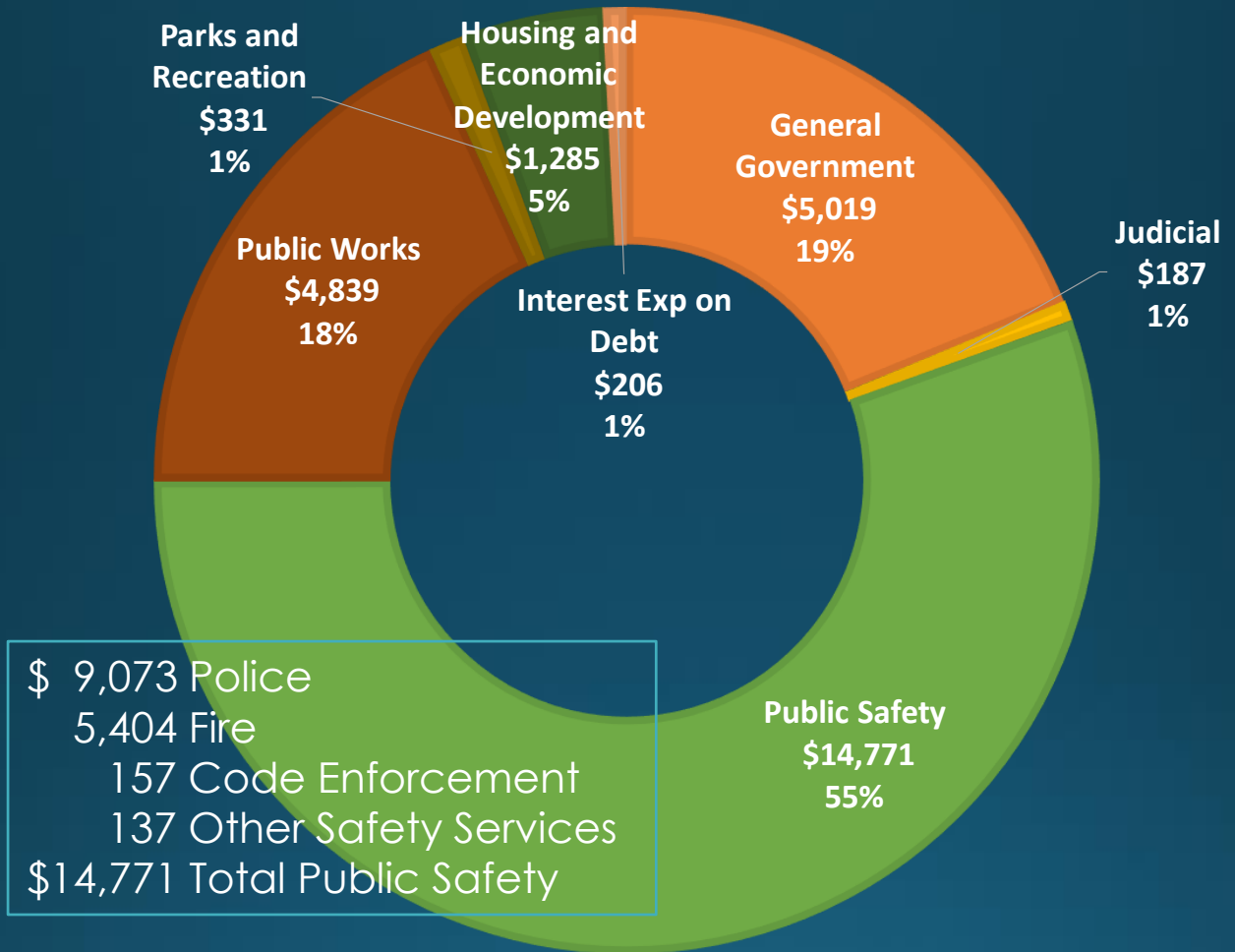


Data comes from Statistical Section, page 108, of the Comprehensive Annual Financial Report 2014.

# Financial Information

## GOVERNMENTAL EXPENDITURES

(in thousands)



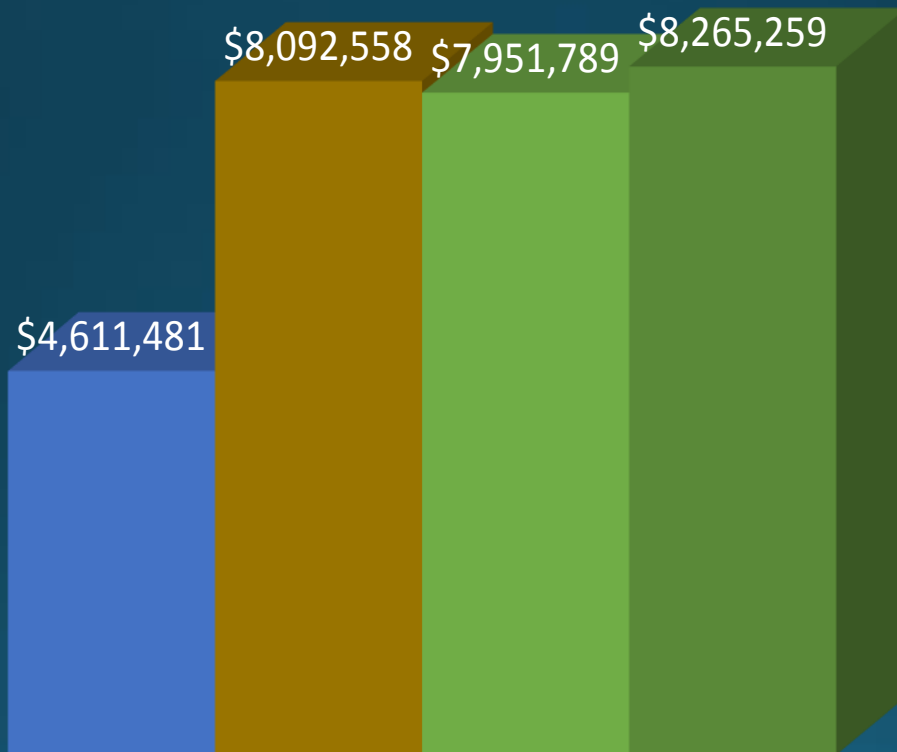
Data comes from governmental activities reported in the government-wide statements. Comprehensive Annual Financial Report 2014 page 14.

# Financial Information

## FUND BALANCE HISTORY

by Fiscal Year

■ 2011 ■ 2012 ■ 2013 ■ 2014



Data comes from Statistical Section, page 103, in the Comprehensive Annual Financial Report 2014.

# Financial Information

This chart presents Program Revenues and Expenditures for the City's major funds. This data excludes Internal Service Funds and Component Units (further defined on pages 22-25)  
*(in thousands of dollars)*



This schedule is a summarized version of the more detailed statement of activities found in the City's Comprehensive Annual Financial Report.

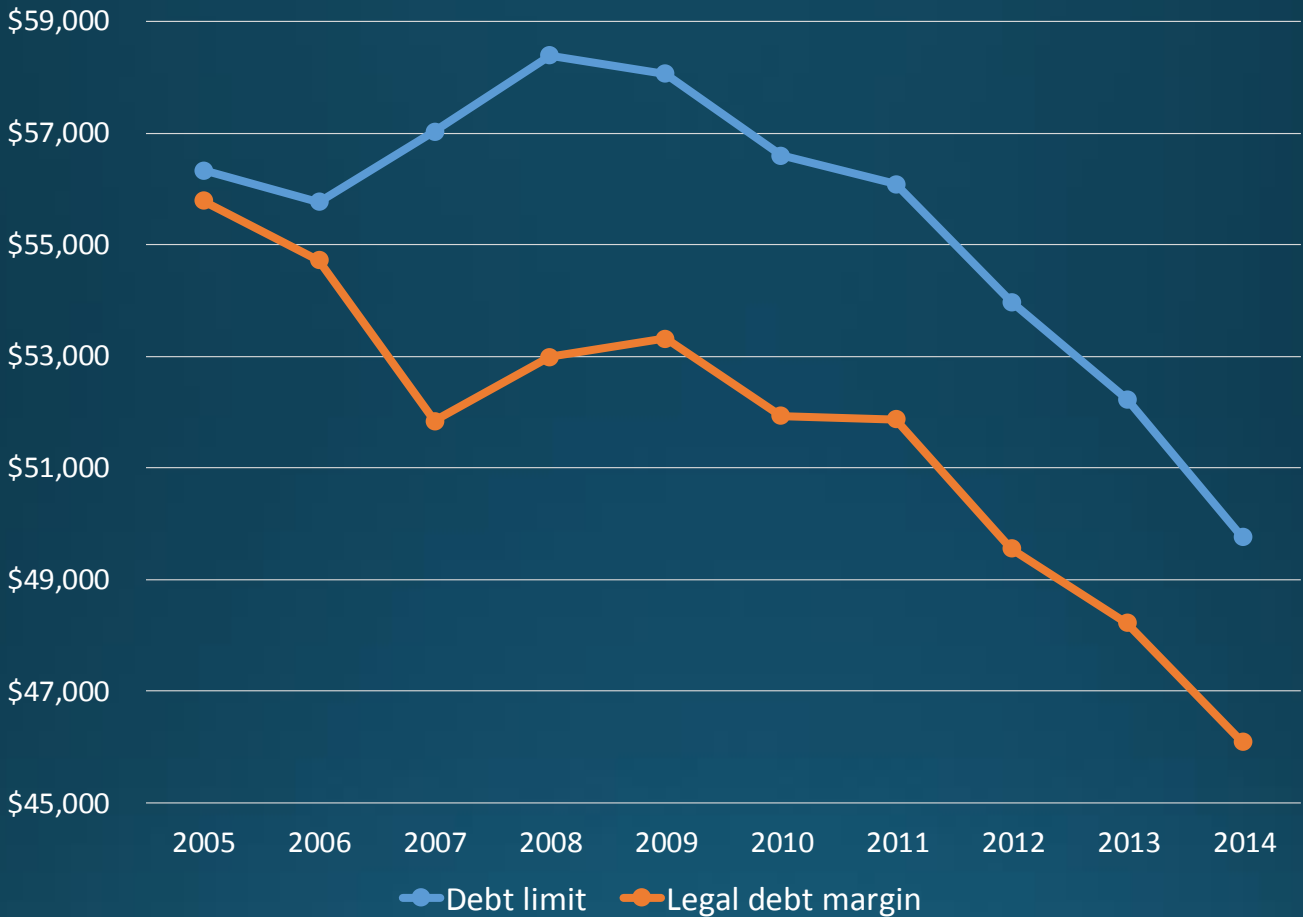
■ Revenues ■ Expenses



# Financial Information

## LEGAL DEBT MARGIN

(in thousands)



Under Georgia finance law, the City's outstanding general obligation debt should not exceed ten percent of total assessed property value. By law, the general obligation debt subject to the limitation may be offset by amounts set aside for repaying general obligation bonds.

Data comes from Statistical Section, page 115, in the Comprehensive Annual Financial Report 2014.

# Component Units

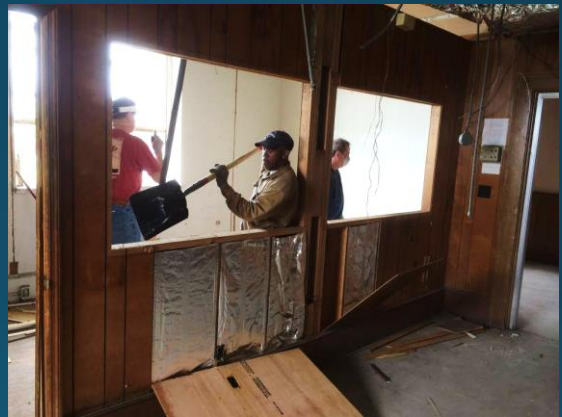
The following four component units (excluded from the graph on page 20) are entities that have significant operational management and financial relationships with the City.

**The City of Griffin Main Street Association (Main Street):** The City Commission appoints several positions of the Main Street's board with additional positions being appointed by various organizations. There are 12 members plus two ex-officio officers. Budget requests for Main Street are submitted to the City Commission for approval, with the City possessing the authority to amend the budget. The City provides approximately 80 percent of Main Street's annual operating budget. The Main Street program services as a "community-driven" initiative focused on revitalizing older and more traditional business districts. The underlying premise of the Main Street concept is to encourage and foster economic development within the context of historic preservation in ways that are appropriate for today's marketplace.



# Component Units

**The City of Griffin Downtown Development Authority (DDA):** The City Commission appoints all seven members of the DDA's board (one of which is an elected official of the City Commission). Budget requests for the DDA are submitted to the Commission for approval, with the City Commission possessing authority to revise the budget. The DDA is responsible for the revitalization strategy for Downtown Griffin. The DDA's mission is to encourage economic activity in Griffin's central business district by attracting businesses, residents, and visitors. The DDA works closely with the City's Planning and Development Department and Main Street program in assisting new businesses through the permitting process.





# Component Units

**The City of Griffin Business and Tourism Association (GBTA):** The City Commission appoints all members of the GBTA board. Board members consist of the City Commission Chairperson, City Manager, City Attorney, and City Finance Director. Budget requests for GBTA are submitted to the Commission for approval, with the City Commission possessing authority to revise the budget. As a 501-(c)3, not-for-profit organization, the GBTA's purpose is to promote business, tourism, trade and business conventions for the City. The GBTA has provided tourism initiatives, brochures and other marketing materials and paid for training and conference registrations to increase awareness of the City of Griffin for both tourism and economic development purposes. The GBTA is solely devoted to economic development through business attraction and retention; tourism; redevelopment; and other special events and projects to promote the City of Griffin.





# Component Units



**The Griffin-Spalding County Airport Authority (the Airport Authority):** The Georgia General Assembly, via House Bill 1261 and Act 536, created the Griffin-Spalding County Airport Authority effective July 1, 2012. The city Commission appoints five of the nine member Airport Authority board. The City and County have mutually agreed to fund one-half of the annual shortfall in revenues required to fund the Airport Authority's budget in future years. Due to these factors and due to the City maintaining the administrative functions of the Authority, the City has elected to include the Airport Authority operations as a component unit of the City. Separate financial statements for the Airport Authority are not prepared.



# Purpose of Report

The purpose of the Popular Annual Financial Report (PAFR) is to provide an overview of the financial position of the City of Griffin, as reported in the City's Comprehensive Annual Financial Report (CAFR), along with other information of interest. The financial information presented here is in summarized and condensed form and does not substitute for the City's CAFR. The CAFR outlines the City's financial position and operating activities each fiscal year presented in conformity with generally accepted accounting principles (GAAP). The PAFR does not conform to GAAP and associated standards as set forth by the applicable governing bodies, but is suitable for those readers who prefer an overview or summary of the City's government and its financial condition. Some of the information is from the City's Annual Budget. The City's CAFR received the award for outstanding financial reporting from the Government Finance Officers Association. The CAFR, Annual Budget, and PAFR are available at City Hall and the City's website at [www.cityofgriffin.com](http://www.cityofgriffin.com).

# Contact Information

Airport	770.227.2928		
Accounting	770.229.6401		
Administrative Services	770.229.6425		
Building Inspections & Permits	770.233.4130		
Building Safety	770.233.4130		
Cemetery	770.229.6410		
City Manager	770.229.6408		
Code Enforcement	770.233.4130		
Customer Service / Billing	770.229.6403		
Downtown Development	770.233.2901		
Electric Outage	770.229.6406	Planning & Development	770.233.4130
Emergency	911	Police	770.229.6450
Fire Rescue	770.229.6415	Public Works	770.229.6424
Station One- 314 North Hill Street	770.229.6417	Sign Shop	770.229.6632
Station Two – 401 North Expressway	770.229.6416	Solid Waste	770.229.6421
Station Three- 101 Crescent West	770.229.6414	Storm Water	770.229.6424
FOG (Fats Oils Grease)	678.692.0404	Streets	770.229.6413
Human Resources	770.229.6400	Tax and License	770.229.6402
Information Technology	770.229.6614	Trash Collection	770-229-6421
Main Street Program	770.228.5356	Water & Wastewater	770.229.6603
Parks	770.233.2919	Yard Waste Collection	770-229-6421





- Thinking, **TOGETHER**
- Celebrating, **TOGETHER**
- Thriving, **TOGETHER**
- Playing, **TOGETHER**
- Working, **TOGETHER**
- Helping, **TOGETHER**
- Learning, **TOGETHER**
- Shopping, **TOGETHER**
- Exploring, **TOGETHER**
- Achieving, **TOGETHER**
- Discovering, **TOGETHER**
- Building, **TOGETHER**
- Creating, **TOGETHER**

City of Griffin  
100 South Hill Street  
P.O. Box T  
Griffin, Georgia 30223  
770.229.6401  
[www.cityofgriffin.com](http://www.cityofgriffin.com)