



# POPULAR ANNUAL FINANCIAL REPORT

Fiscal Year Ended June 30, 2015

City of Griffin, Georgia





## TABLE OF CONTENTS

Financial Report Message	3
Vision, Mission, Values	4
Quick Facts	5
Location	6
Commissioners	7
Organizational Chart	9
Awards & Recognition	10
Definitions	11-12
Financial Information	13-21
Component Units	22-25
Purpose of Financial Report	26
Contact Information	27

The Complete Annual Budget and Comprehensive Annual Financial Report are available at City Hall and the City's website [www.cityofgriffin.com](http://www.cityofgriffin.com).



# FINANCIAL REPORT MESSAGE

We are pleased to present the City of Griffin's Popular Annual Financial Report (PAFR) for the fiscal year ended June 30, 2015. This is the City's ninth PAFR, and is formulated as an easy to read version of the City's Comprehensive Annual Financial Report (CAFR) that we publish on a yearly basis.

The Comprehensive Annual Financial Report (CAFR) is a detailed account of the City's financial statements, notes, schedules, and statistics. The CAFR was prepared in conformance with Generally Accepted Accounting Principles (GAAP) and was audited by Mauldin, Jenkins, Certified Public Accountants, LLC, 439 Mulberry Street, Post Office Box 1877, Macon Georgia 31202-1877.

The CAFR received an unqualified opinion. A copy of our CAFR can be found on the City's website under Departments, Administrative Services, Finance, Finance Reports

<http://http://www.cityofgriffin.com/Departments/AdministrativeServices/Finance/FinanceReports/PopularAnnualFinancialReports.aspx>.

The Popular Annual Financial Report (PAFR) provides citizens with an overview of the City's revenues, expenditures, and general information, in a simplified interpretation of the CAFR. The PAFR is prepared by the Department of Administrative Services, Finance and Accounting staff and is not obligated to be audited under GAAP rules.

Thank you for your interest in the City of Griffin's government and its functions. Please feel free to comment or offer suggestions on the PAFR to Markus Schwab, CPA/CITP/CGMA, Chief Financial Officer, email

[mschwab@cityofgriffin.com](mailto:mschwab@cityofgriffin.com).

Respectfully submitted,

*Kenny Smith*

City Manager



# VISION

# MISSION

# VALUES



## VISION

The City of Griffin shall be a model of excellence in local government; and a safe, well-planned community with equal opportunity for all.

## MISSION

In partnership with our community, the mission of the City of Griffin is to protect and enhance the quality of life by providing a high level of service in an efficient and responsive manner for all the citizens.

## VALUES

- We believe in honest, open, and democratic government.
- We are dedicated to the highest ideals of honor and integrity in order to merit the respect, trust, and confidence of the citizens of Griffin.
- We believe our primary responsibility is to those who live, work, visit, or otherwise come in contact with our City. We are committed to enhancing the quality of life by providing exemplary services.
- We believe that the employees of the City are its most important resource and through them, we will accomplish our mission and vision. We will support the employees with dignity, respect, and fairness.
- We believe it is important to listen to our citizens and be sensitive and responsive to their needs.
- We believe that proper planning, training, and teamwork will fulfill our mission and vision for the future of the City of Griffin.

# QUICK FACTS

Services: Police, Fire, Electric, Water, Sewer, Storm Drainage, Streets, Solid Waste, Airport, Parks, Recreation, Planning and Economic Development

Form of Government: Board of Commissioners/Chairperson/City Manager

Governing Body: 6 District and 1 at-Large Commissioners are elected to four year terms

Population – (2012 est.): 23,643

Number of Households – 2014: 8,554

Median Age – (2012 Citi-Data): 33.8

Median Household Income – (2012 Citi-Data): \$30,237

Planning Area (square miles): 14

Incorporated (square miles): 14

Acres of Parks: 190

Operating Budget – 2015: \$100M

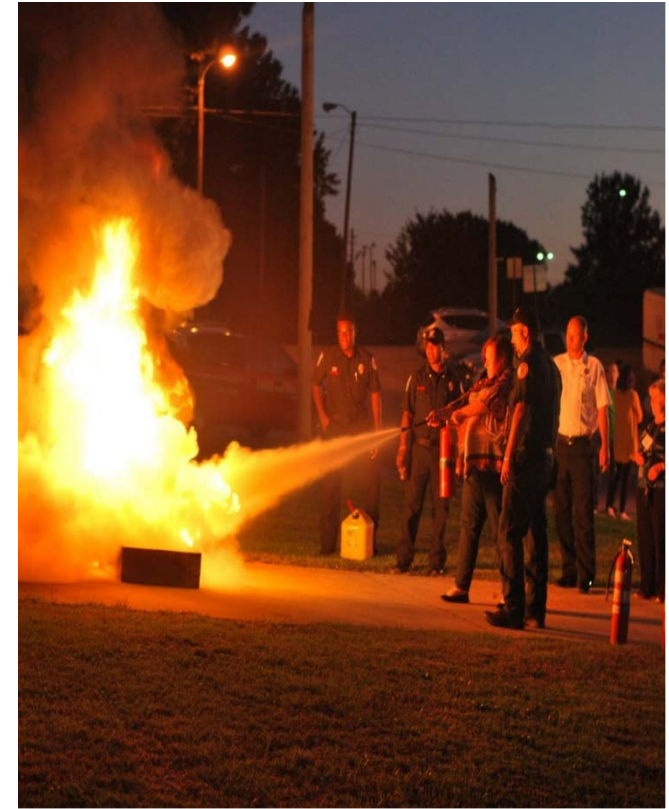
Employees: 460

2015 Operating Millage Rate (City): 7.889

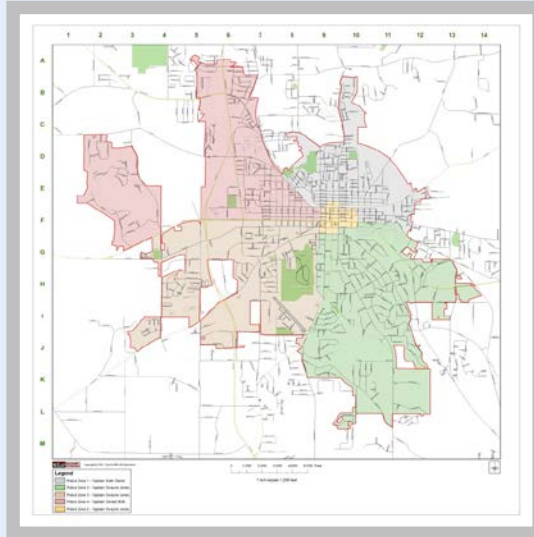
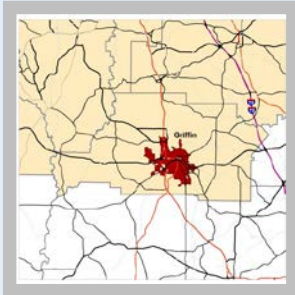
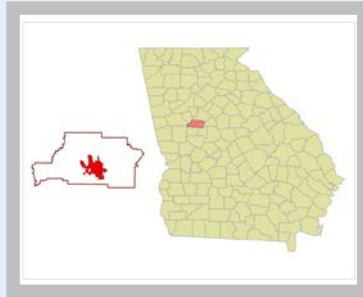
2014 Total Operating Millage Rate (State, City, County, & School): 44.030

2014 Sales and Use Tax Rate: 7%

Incorporated: 1840



# LOCATION



The City of Griffin is located in Spalding County along Highway 16 just west of I-75 with easy access to City of Griffin-Spalding County Municipal Airport.

Griffin is a major employment center for Spalding County and serves as a regional retail and service provider for counties south of the Atlanta metropolitan area.

The City's location has several advantages that have help sustain its economy over the years.

- Proximity to Hartsfield-Jackson Airport
- Midway between Interstates 75 and 85
- Access to the amenities of Atlanta while retaining its historic heritage
- Important regional center midway between the cities of Atlanta, Macon, and Columbus

# MEET THE COMMISSIONERS



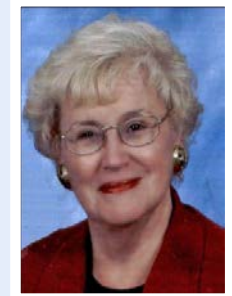
Cynthia Reid Ward,  
Commissioner District 1



Cora Flowers,  
Commissioner District 2



Ryan McLemore,  
Commissioner District 3



Joanne Todd,  
Commissioner District  
4



Richard Morrow,  
Commissioner District 5



Rodney McCord,  
Commissioner District 6



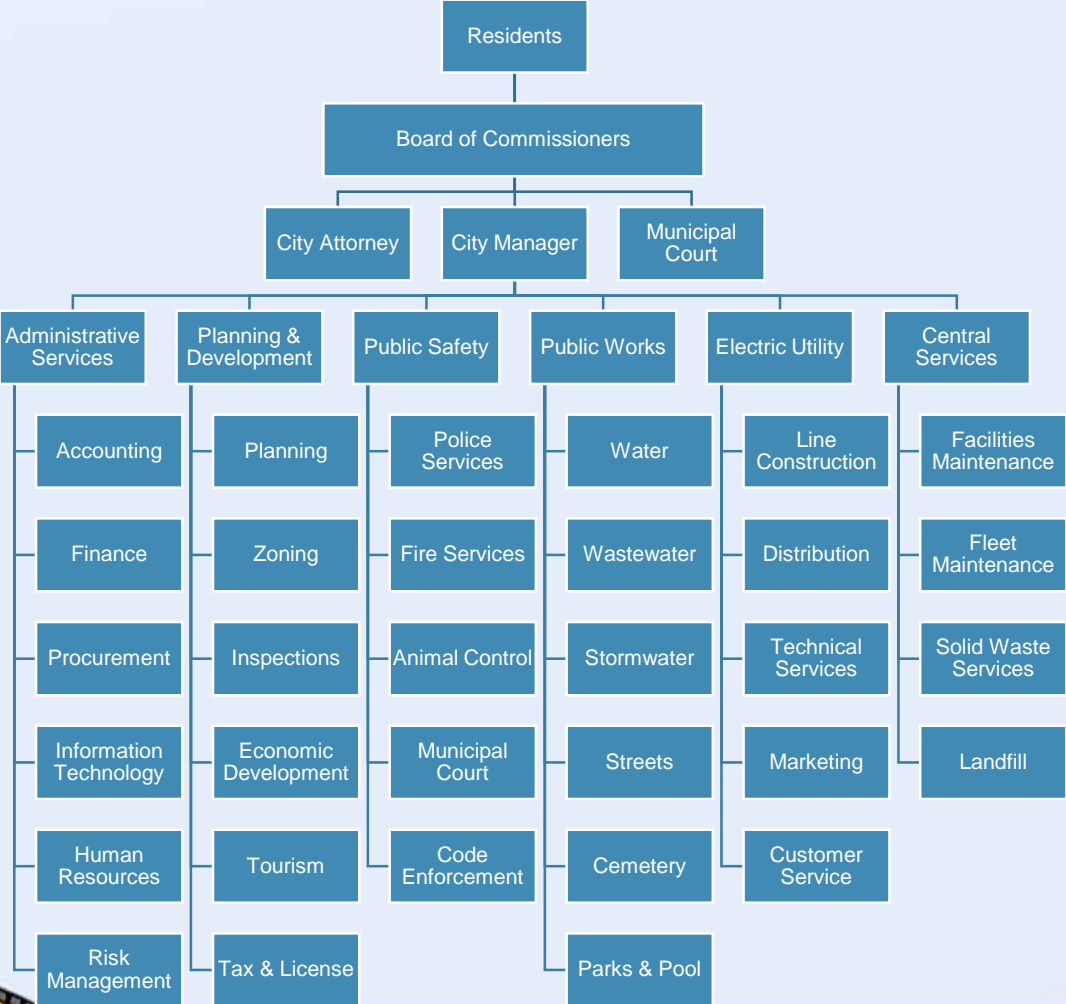
Douglas S. Hollberg,  
Commissioner  
City At-Large

# MEET THE COMMISSIONERS





# ORGANIZATION CHART





Government Finance Officers Association

**Award for  
Outstanding  
Achievement in  
Popular Annual  
Financial Reporting**

Presented to  
**City of Griffin  
Georgia**

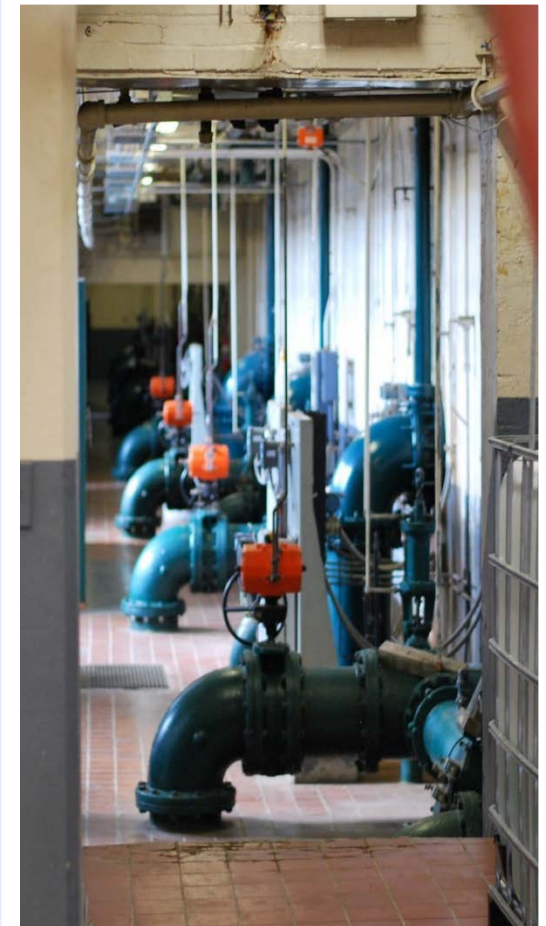
For its Annual  
Financial Report  
for the Fiscal Year Ended

**June 30, 2014**

*Jeffrey R. Ennis*  
Executive Director/CEO

Government Finance Officers Association (GFOA) Award for Excellence in Financial Reporting for Comprehensive Annual Financial Report (CAFR) – 2014, 2013, 2012, 2011, 2010, 2009, 2008, 2007, 2006, 2005, and 2004

GFOA Award for Outstanding Achievement in Popular Financial Reporting (PAFR) – 2014, 2013, 2012, 2011, 2010, 2009, 2008, 2007, and 2006



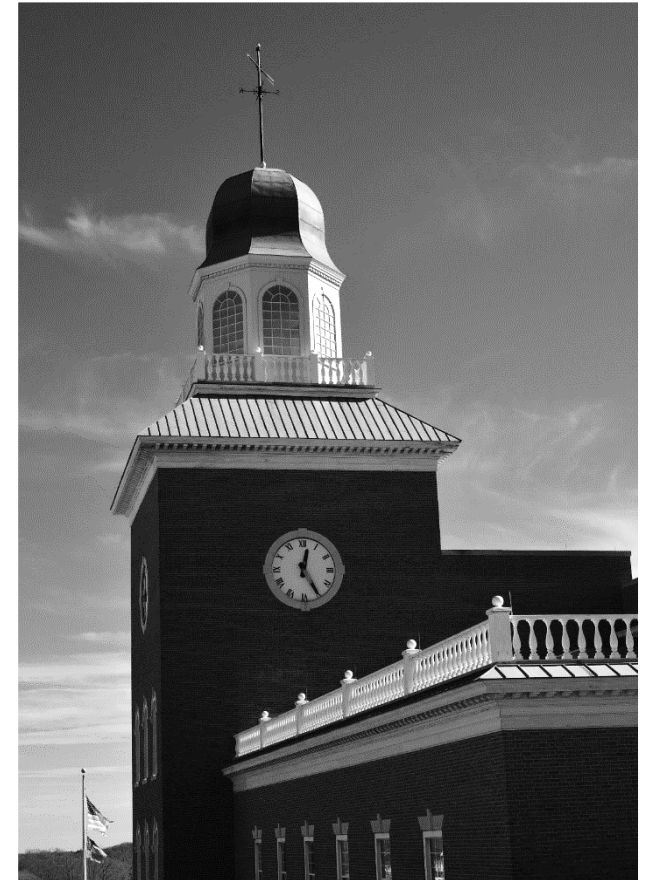
# DEFINITIONS

- **Capital assets.** Land, buildings, equipment, machinery, works of art, infrastructure, etc., that are use in operations and that have initial useful lives extending beyond a single reporting period.
- **Deferred inflow of resources.** An acquisition of net position by the government that is applicable to a future reporting period.
- **Deferred outflow of resources.** A consumption of net position by the government that is applicable ta future reporting period.
- **Fund.** Fiscal and accounting entity with a self-balancing set of accounts recording cash and other financial resources, together with all related liabilities and residual equities or balances, and changes therein, that are segregated for the purpose of carrying on specific activities or attaining certain objectives in accordance with special regulation, restrictions, or limitations.
- **Fund balance.** Net position of a governmental fund (difference between assets, liabilities, deferred outflows of resources, and deferred inflows of resources).



# DEFINITIONS

- **Governmental activities.** Activities generally financed through taxes, intergovernmental revenues, and other non-exchange revenues,. These activities are usually reported in governmental funds and internal service funds,.
- **Net investment in capital assets.** One of three components of net position that must be reported in both government-wide and proprietary fund financial statements. It consists of capital assets, net of accumulated depreciation, less debt associated with the acquisition, construction, or improvement of those assets. Deferred outflows of resources.
- **Net position.** The residual of all other financial statement elements presented in the statement of financial position.
- **Restricted net position.** One of three components of net position that must be reported in both government-wide and proprietary fund financial statements. It consists of restricted assets reduced by liabilities and deferred inflows of resources related to those assets.
- **Unrestricted net position.** One of three components of net position that must be reported in both government-wide and proprietary fund financial statements. It is the difference between total net position and its two other components (net investment in capital assets and restricted net position).



# FINANCIAL INFORMATION

The Statement of Net Position reflects a strong and healthy net financial position for the City as of June 30, 2015. Assets of the City exceeded liabilities by \$113 million (not including deferred outflows). Total assets increased by \$4 million and the City's liabilities decreased by \$-4.2 million, largely from a focus on debt reduction.

## Statement of Net Position as of June 30<sup>th</sup>

*(in thousands of dollars... '000s)*

	2015	2014	2013	2012	2011
Current and other assets	\$ 70,639	\$ 71,256	\$ 68,676	\$ 58,386	\$ 52,100
Capital assets	140,072	135,064	134,347	133,650	135,821
<b>Total Assets</b>	<b>210,711</b>	<b>206,320</b>	<b>203,023</b>	<b>192,036</b>	<b>187,921</b>
Deferred outflows of resources	4,871	3,967	2,199	-0-	-0-
Other liabilities	10,676	11,155	10,814	9,067	10,620
Long-term liabilities outstanding	86,668	90,356	74,461	73,582	75,624
<b>Total Liabilities</b>	<b>97,344</b>	<b>101,511</b>	<b>85,275</b>	<b>82,649</b>	<b>86,244</b>
Deferred inflows of resources	1,419	-0-	-0-	-0-	-0-
<b>Net position:</b>					
Net investment in capital assets	75,008	67,276	63,193	63,637	-0-
Restricted	10,184	12,210	14,611	4,840	-0-
Unrestricted	31,627	29,290	42,142	40,910	-0-
<b>Total net position</b>	<b>\$ 116,819</b>	<b>\$ 108,776</b>	<b>\$ 119,946</b>	<b>\$ 109,387</b>	<b>\$ 101,677</b>

# FINANCIAL INFORMATION

The City's Statement of Changes in Net Position reflects all the financial activity for the City during the fiscal year ended June 30, 2015. This statement presents information to show how the City's net position changed during the year as a result of financial activity (i.e. revenues and expenses). This is a summarized version of the more detailed statement found in the City's complete Comprehensive Annual Financial Report.

## Statement of Changes in Net Position for the Fiscal Year Ended June 30<sup>th</sup>

*(in thousands of dollars... '000s)*

	2015	2014	2013	2012	2011
Revenues	\$ 97,118	\$ 98,055	\$ 102,313	\$ 93,876	\$ 96,298
Less: expenses	89,074	88,323	91,111	86,166	85,763
Special item:					
Transfer Assets to Airport Authority	0	-3,153	0	0	0
Increase (decrease) in net position	8,044	6,579	11,202	7,710	10,535
Prior period adjustment	0	-17,750	0	0	0
Net position, beginning as restated	108,776	119,947	108,745	10,535	0
<b>Net position, end of year</b>	<b>\$ 116,820</b>	<b>\$ 108,776</b>	<b>\$ 119,947</b>	<b>\$ 18,245</b>	<b>\$ 10,535</b>

This statement shows that the City's change net position increased each year for the past five years. This reflects a strong fiscal mindset and stewardship in areas that fund future capital improvements. While revenues decreased \$ 0.9 million from 2013, expenses increased \$ 0.8 million.

The prior period adjustment is a direct result of GASB Statement No. 68 that requires governments providing defined benefit pensions to recognize their long-term obligation for pension benefits as a liability for the first time, and to more comprehensively and comparably measure the annual costs of pension benefits.

EXCLUDES COMPONENT UNIT revenue of \$826 thousand and expense of \$1.335 million.

# FINANCIAL INFORMATION

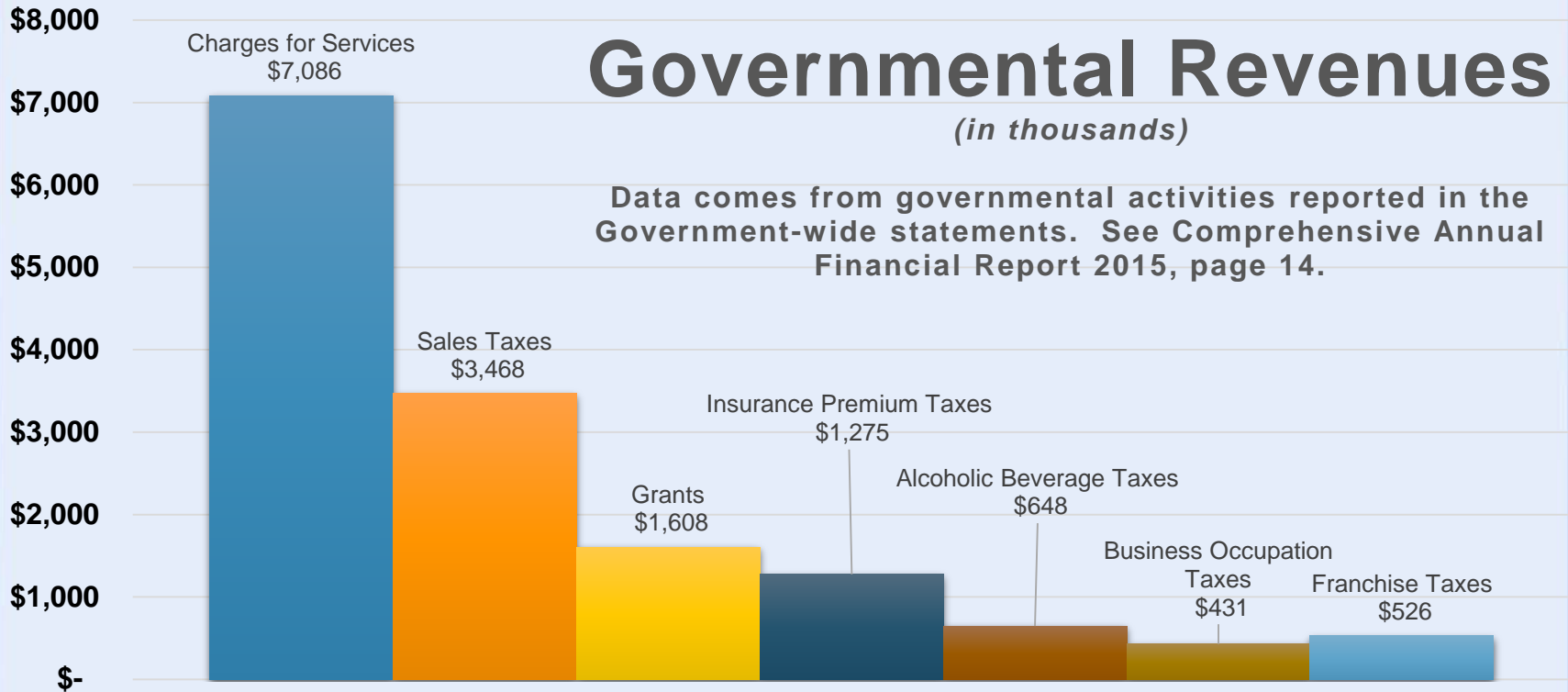
Data comes from governmental activities as reported in the government-wide statements. Comprehensive Annual Financial Report 2015, page 14.



## Revenues

(in thousands)

# FINANCIAL INFORMATION





# FINANCIAL INFORMATION

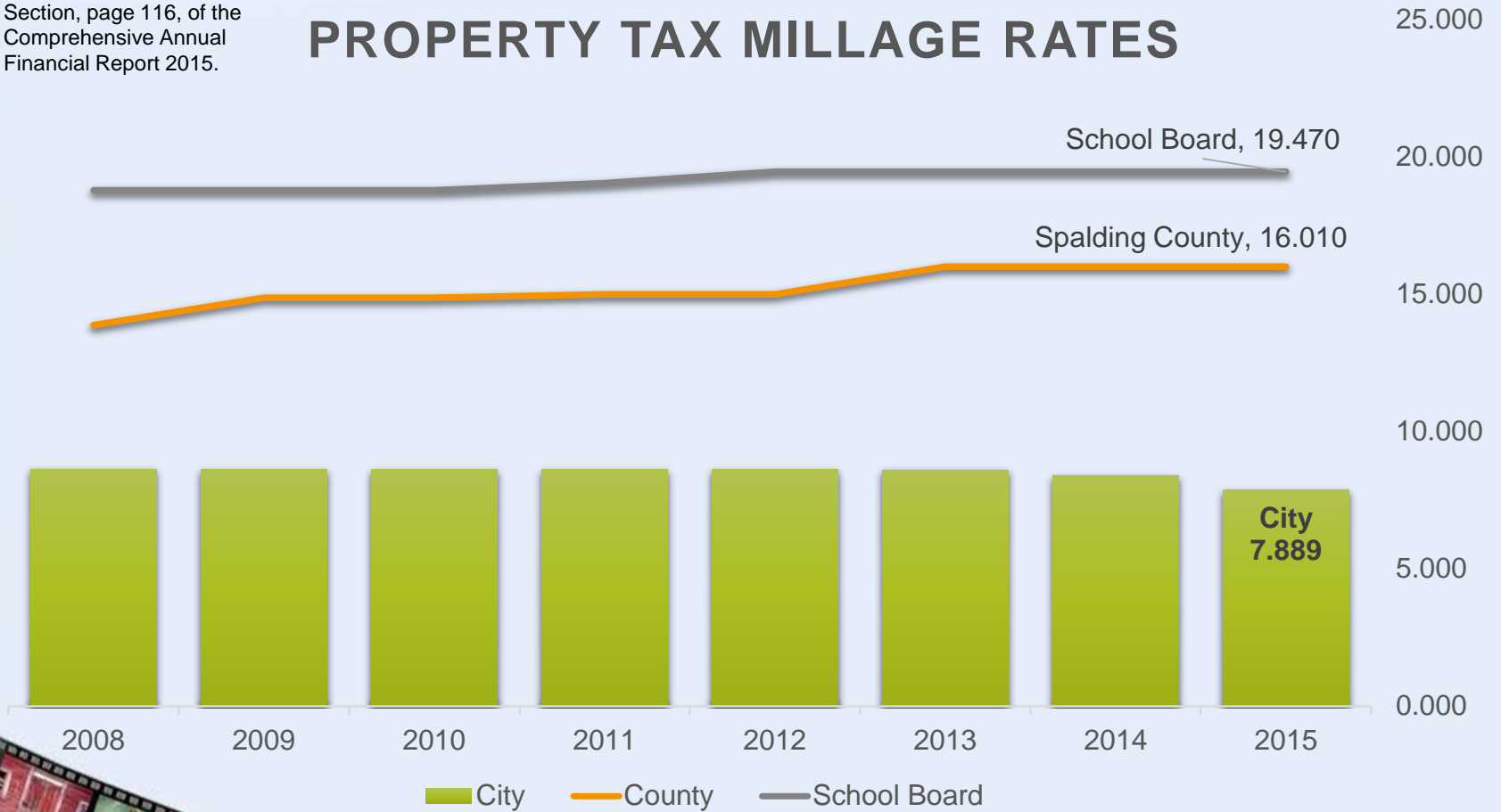


Data comes from Statistical Section, page 112, of the Comprehensive Annual Financial Report 2015.

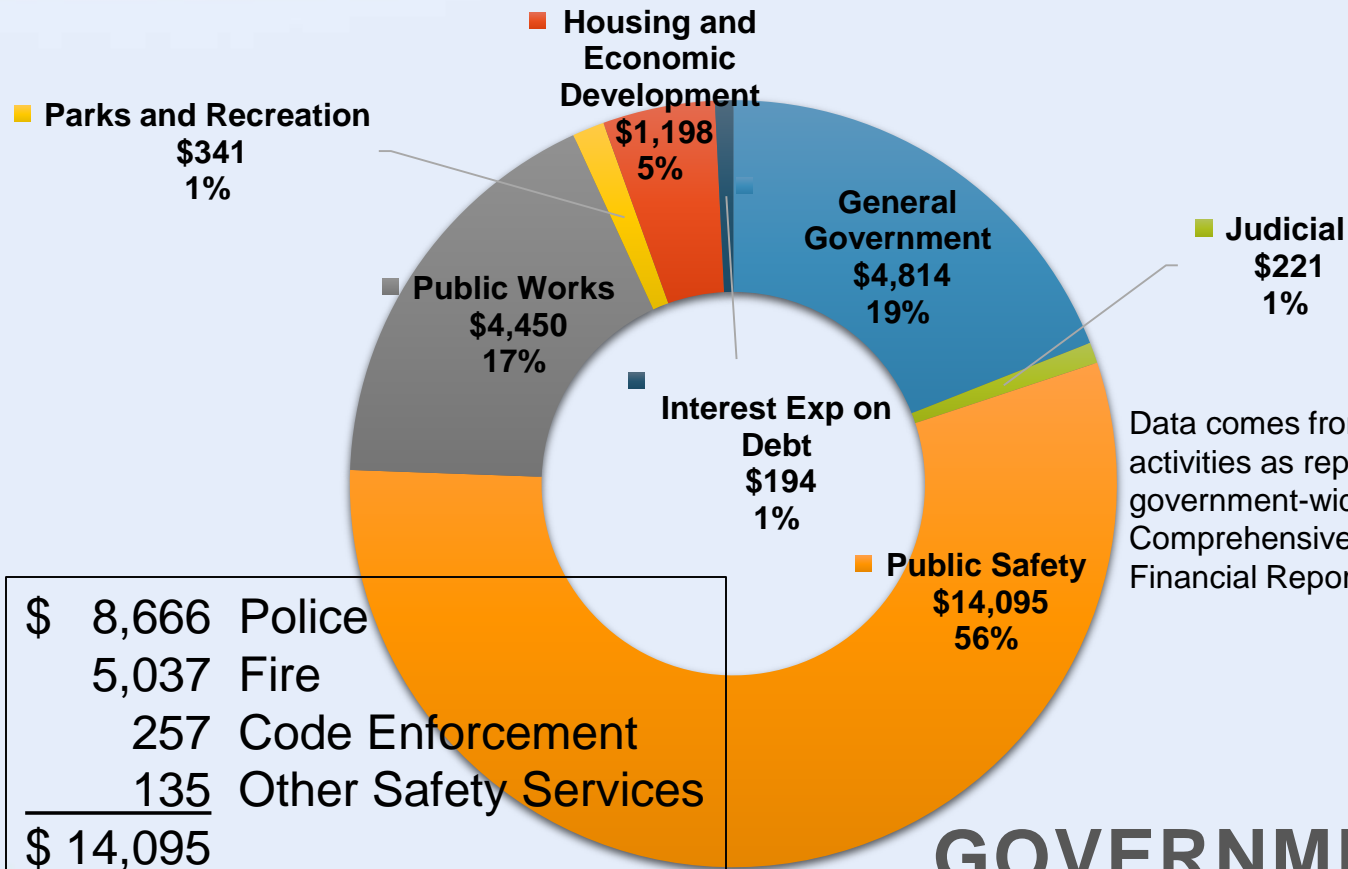
# FINANCIAL INFORMATION

Data comes from Statistical Section, page 116, of the Comprehensive Annual Financial Report 2015.

## PROPERTY TAX MILLAGE RATES



# FINANCIAL INFORMATION



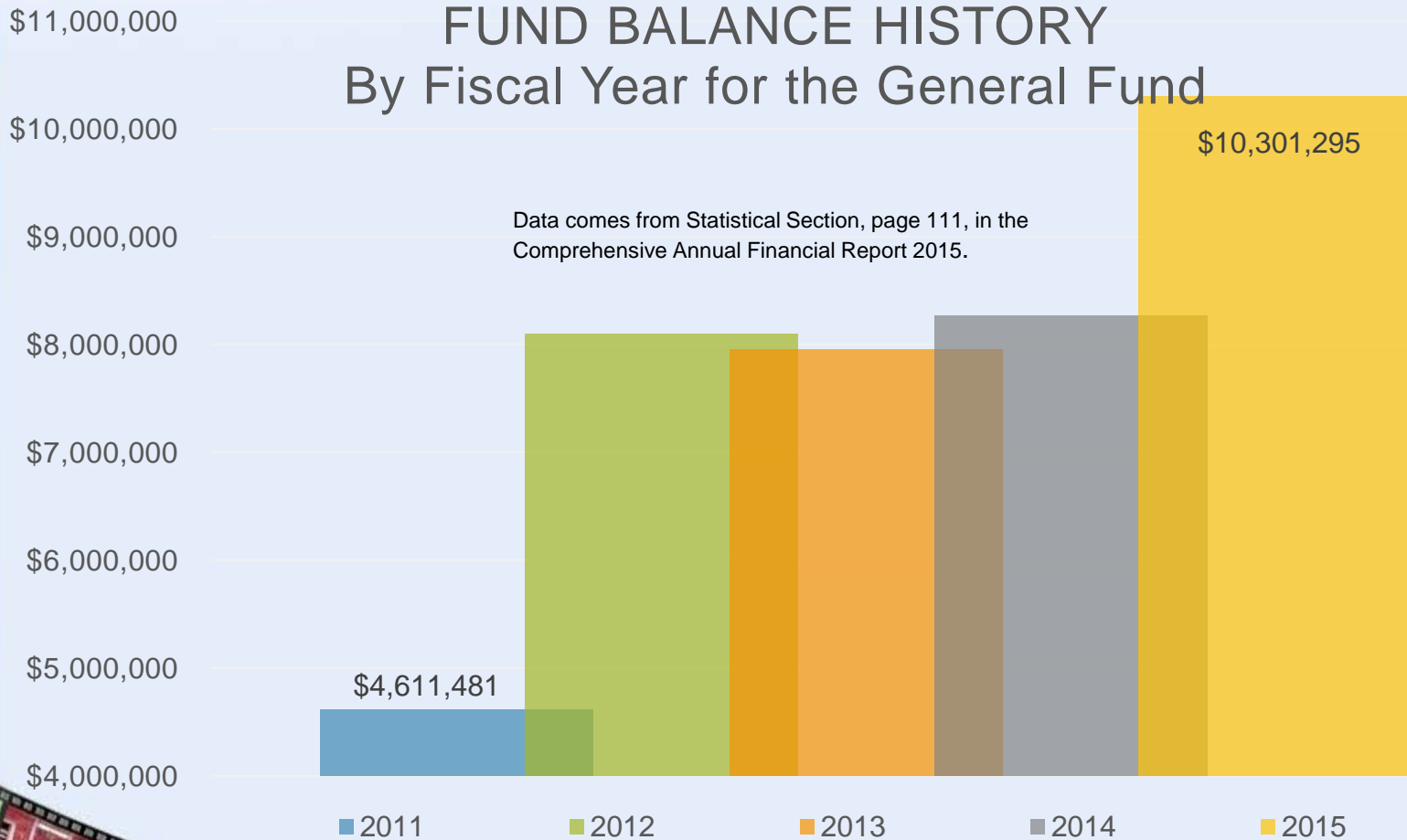
Data comes from governmental activities as reported in the government-wide statements. Comprehensive Annual Financial Report 2015, page 14.

## GOVERNMENTAL EXPENDITURES

(In thousands)

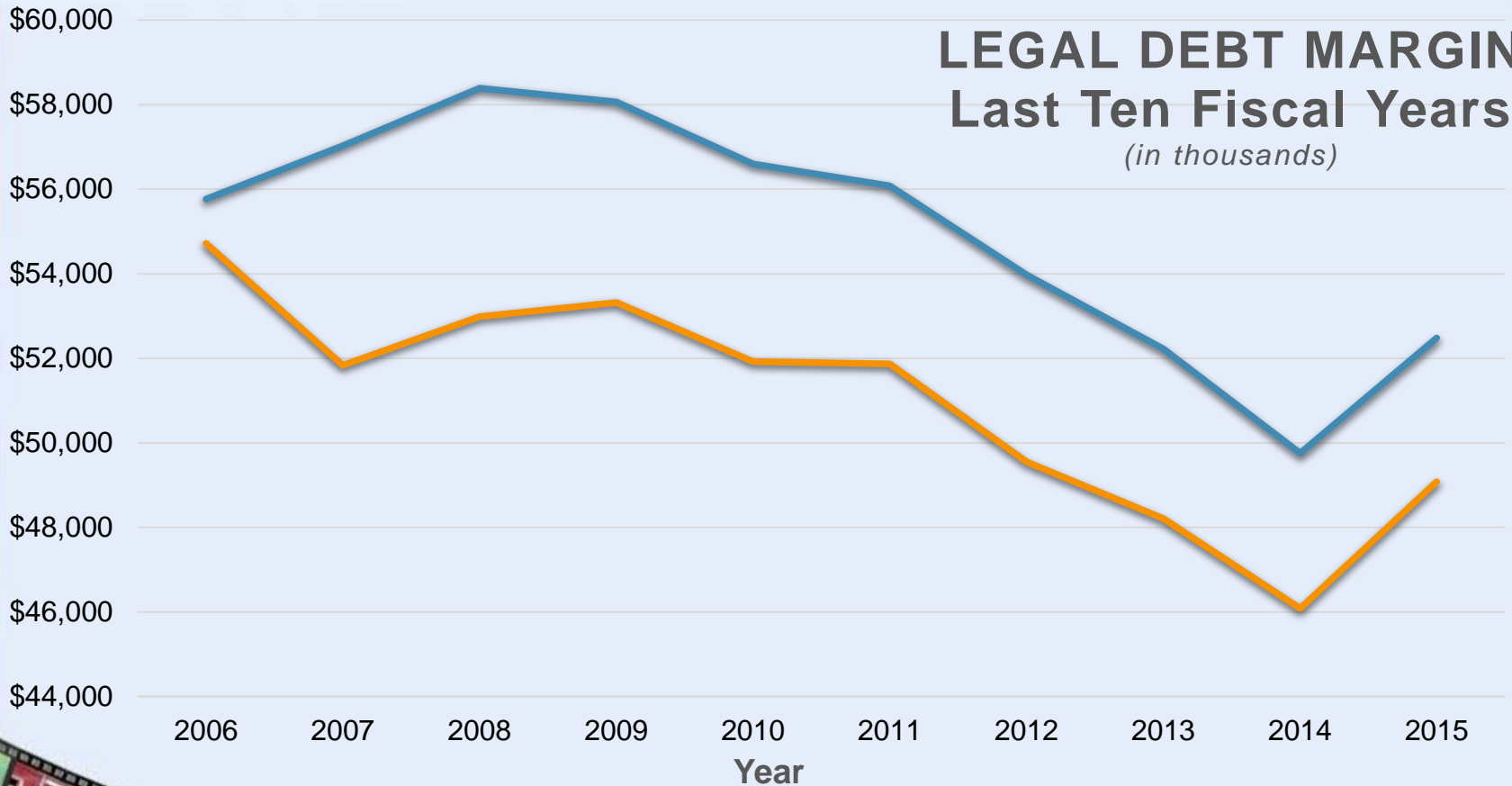
# FINANCIAL INFORMATION

## FUND BALANCE HISTORY By Fiscal Year for the General Fund



# FINANCIAL INFORMATION

## LEGAL DEBT MARGIN Last Ten Fiscal Years *(in thousands)*



Data comes from Statistical Section, page 123, of the Comprehensive Annual Financial Report 2015.

# COMPONENT UNITS

## The City of Griffin Main Street Association (Main Street):

The City Commission appoints several positions of the Main Street's board with additional positions being appointed by various organizations. There are 12 members plus two ex-officio officers. Budget requests for Main Street are submitted to the City Commission for approval, with the City possessing the authority to amend the budget. The City provides approximately 80 percent of Main Street's annual operating budget. The Main Street program serves as a "community-driven" initiative focused on revitalizing older and more traditional business districts. The underlying premise of the Main Street concept is to encourage and foster economic development within the context of historic preservation in ways that are appropriate for today's marketplace.



# COMPONENT UNITS

## The City of Griffin Downtown Development Authority (DDA):

The City Commission appoints all seven members of the DDA's board (one of which is an elected official of the City Commission). Budget requests for the DDA are submitted to the Commission for approval, with the City Commission possessing authority to revise the budget. The DDA is responsible for the revitalization strategy for Downtown Griffin. The DDA's mission is to encourage economic activity in Griffin's central business district by attracting businesses, residents, and visitors. The DDA works closely with the City's Planning and Development Department and Main Street program in assisting new businesses through the permitting process.



# COMPONENT UNITS

## **The City of Griffin Business and Tourism Association (GBTA):**

The City Commission appoints all members of the GBTA board. Board members consist of the City Commission Chairperson, City Manager, City Attorney, and City Finance Director. Budget requests for GBTA are submitted to the Commission for approval, with the City Commission possessing authority to revise the budget. As a 501-(c)3, not-for-profit organization, the GBTA's purpose is to promote business, tourism, trade and business conventions for the City. The GBTA has provided tourism initiatives, brochures and other marketing materials and paid for training and conference registrations to increase awareness of the City of Griffin for both tourism and economic development purposes. The GBTA is solely devoted to economic development through business attraction and retention; tourism; redevelopment; and other special events and projects to promote the City of Griffin.





# COMPONENT UNITS

## **The Griffin-Spalding County Airport Authority (the Airport Authority):**

The Georgia General Assembly, via House Bill 1261 and Act 536, created the Griffin-Spalding County Airport Authority effective July 1, 2012. The City Commission appoints five of the nine member Airport Authority board. The City and County have mutually agreed to fund one-half of the annual shortfall in revenues required to fund the Airport Authority's budget in future years. Due to these factors and due to the City maintaining the administrative functions of the Authority, the City has elected to include the Airport Authority operations as a component unit of the City. Separate financial statements for the Airport Authority are not prepared.





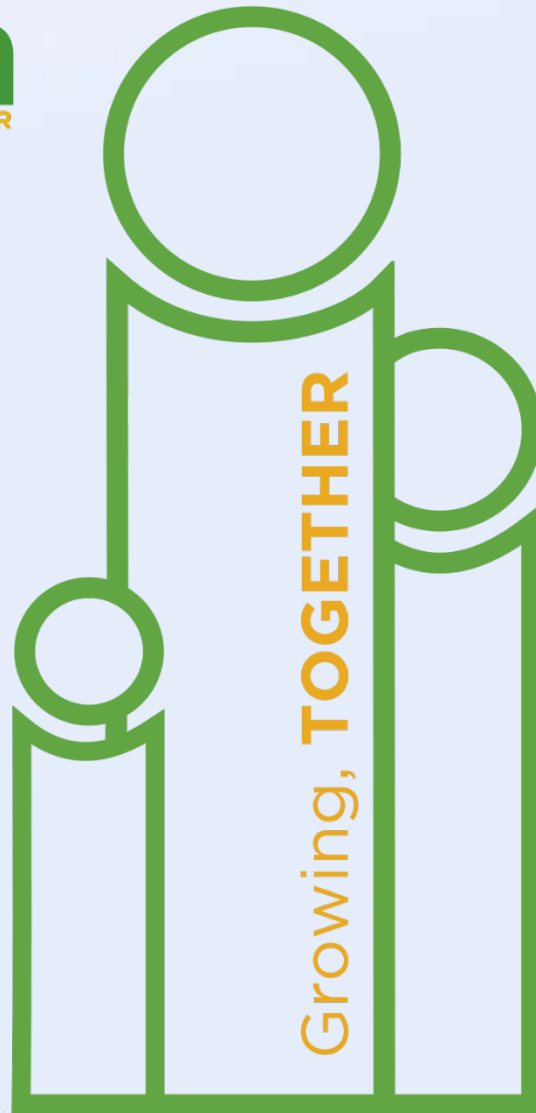
# PURPOSE OF REPORT

The purpose of the Popular Annual Financial Report (PAFR) is to provide an overview of the financial position of the City of Griffin, as reported in the City's Comprehensive Annual Financial Report (CAFR), along with other information of interest. The financial information presented here is in summarized and condensed form and does not substitute for the City's CAFR. The CAFR outlines the City's financial position and operating activities each fiscal year presented in conformity with generally accepted accounting principles (GAAP). The PAFR does not conform to GAAP and associated standards as set forth by the applicable governing bodies, but is suitable for those readers who prefer an overview or summary of the City's government and its financial condition. Some of the information is from the City's Annual Budget. The City's CAFR received the award for outstanding financial reporting from the Government Finance Officers Association. The CAFR, Annual Budget, and PAFR are available at City Hall and the City's website at [www.cityofgriffin.com](http://www.cityofgriffin.com).

# CONTACT INFORMATION

Airport	770.227.2928	Electric Outage	770.229.6406	
Accounting	770.229.6401	Emergency	911	
Administrative Services	770.229.6425	Fire Rescue	770.229.6415	
Building Inspections & Permits	770.233.4130	Station One- 314 North Hill Street	770.229.6417	
Building Safety	770.233.4130	Station Two – 401 North Expressway	770.229.6416	
Cemetery	770.229.6410	Station Three- 101 Crescent West	770.229.6414	
City Manager	770.229.6408	FOG (Fats Oils Grease)	678.692.0404	Sign Shop 770.229.6632
Code Enforcement	770.233.4130	Human Resources	770.229.6400	Solid Waste 770.229.6421
Customer Service / Billing	770.229.6403	Information Technology	770.229.6614	Storm Water 770.229.6424
Downtown Development	770.233.2901	Planning & Development	770.233.4130	Streets 770.229.6413
		Police	770.229.6450	Tax and License 770.229.6402
		Public Works	770.229.6424	Trash Collection 770-229-6421





- Thinking, **TOGETHER**
- Celebrating, **TOGETHER**
- Thriving, **TOGETHER**
- Playing, **TOGETHER**
- Working, **TOGETHER**
- Helping, **TOGETHER**
- Learning, **TOGETHER**
- Shopping, **TOGETHER**
- Exploring, **TOGETHER**
- Achieving, **TOGETHER**
- Discovering, **TOGETHER**
- Building, **TOGETHER**
- Creating, **TOGETHER**

City of Griffin  
100 South Hill Street  
P.O. Box T  
Griffin, Georgia 30223  
770.229.6401  
[www.cityofgriffin.com](http://www.cityofgriffin.com)