



GRIFFIN

POLICE DEPARTMENT



2018 Annual Report
Michael Yates, *Chief of Police*



TABLE OF CONTENTS

Message from the Chief of Police

Organizational Chart

Mission Statement/Executive Summary

Accreditation

Part One Crimes

Part Two Crimes

Hiring and Recruitment/Training

Office of Professional Standards

Pursuits/Use of Force

Uniform Patrol Division

Animal Control Unit

Criminal Investigation Division

Special Investigations Unit

Crime Scene Unit

Evidence & Property

SRO/DARE and Warrant Division

Lieutenants

Civilian personnel





MESSAGE FROM THE *CHIEF OF POLICE*

Dear Citizens,

The Griffin Police Department is proud to release our 2018 Annual Report. I hope that you find the information contained in the report both informative and useful.

The Annual Report reviews the activities, programs and services the department provides to both our citizens and visitors to our community. The men and women of the Griffin Police Department strive to provide the best possible law enforcement services to our community. The officers and staff are some of the best trained law enforcement professionals in the State of Georgia.

The Griffin Police Department continues to work to reduce Part 1 Crimes. Part 1 crimes are those crimes identified by the Federal Bureau of Investigation as our most serious crimes; Crimes Against Persons (Murder, Forcible Rape, Robbery, Aggravated Assault) and Crimes Against Property (Burglary, Larceny, Motor Vehicle Theft, Arson). As you review the department's crime statistics, you will note that in 2018, the City of Griffin experienced 13% reduction in Part 1 crimes from 2017) while at the same time the overall calls for service in the city also decreased (compared to 2017). Additionally, the department clearance rates exceed the national clearance rates for Part 1 crimes.

The Griffin Police Department participates in several community events each year. The Citizen's Police Academy, National Night Out, Citizen's Government Academy; CSI Kids Academy, Shop With a Cop and the "Buddy Bench" program are just a few of the programs the department participated in 2018.

Please take the time to review all of the information in our Annual Report, I believe that you will be proud of the work that your police department does for our community.

I hope this report is meaningful for our citizens and leaders and I look forward to seeing what great things we as a community can do in the future to improve our quality of life.

Thank You for Being our Partner in Our Mission to make Griffin a Great Place To Work, Live and Play!

God Bless,

Michael Yates
Chief of Police

Chief Yates has 31 years of experience in Law Enforcement, 22 of those years in Command Positions and 19 Years of experience as the Chief of Police in agencies ranging in size from 30 to 160 sworn officers. Chief Yates has specialized in numerous areas focusing on Organizational Change, Narcotics, Gang Suppression, Organized Crime, High Risk Operations, Highway Drug Interdiction, Crime Reduction and Gang Prevention Strategies. He has a proven track record of reducing Part I Crime significantly and bringing stability and purpose to every organization he has led.

Chief Yates began his career as a Deputy Sheriff in Henry County, Georgia and then the City of Atlanta police. Later, employed by the Henry County Police Department, he rose through various ranks to that of Captain. In 2000 Chief Yates began his career as Chief after being selected to lead the Bibb County Campus Police in Macon, Ga. In 2001 he was selected to lead the City of Americus, Ga. Police Department reducing their crime index by 60% during his tenure. In 2004 he was selected to build and implement the first 7 County 911 Center in the State (Middle Flint Regional 911) and in 2005 left to become the Chief of Police in Jonesboro, Arkansas until 2014. In 2015 he returned to Georgia and was selected to lead the Griffin Police Department in February of 2016.

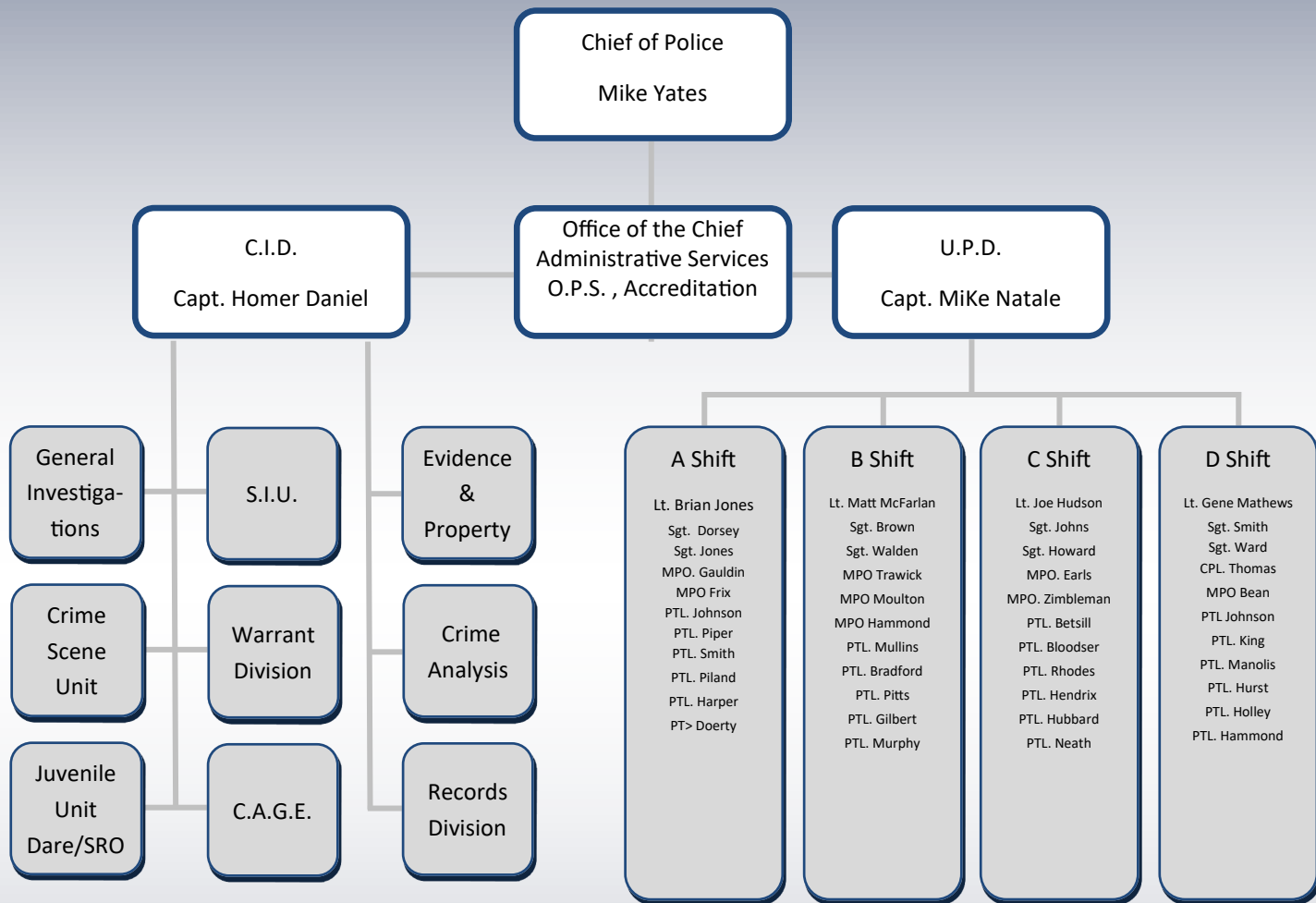
Chief Yates has a BS in Criminal Justice from the University of West Georgia and a Master's Degree in Public Administration from Columbus State University. He is a graduate of the Georgia Chiefs of Police Command College, the FBI National Academy (199th Session) and the Arkansas Leader Professional Development Program. Chief Yates is a POST certified instructor and has taught numerous College courses at Arkansas State University. He has over 2000 hours of advanced law enforcement training and holds Advanced and Executive Certifications in multiple states.

Chief Yates was one of 10 Police Chiefs in the State of Georgia to be nominated for the prestigious "Chief of the Year" award in 2017 and again in 2018 by the Georgia Association of Chiefs of Police.





ORGANIZATIONAL CHART





MISSION STATEMENT/EXECUTIVE SUMMARY

MISSION STATEMENT

The City of Griffin Police Department shall strive to provide the citizens of Griffin with the most professional, best trained and most efficient police department in the State of Georgia.

The Griffin Police Department is comprised of approximately 80 sworn officers and 11 civilian support personnel. We serve a daytime population of about 100,000 people, roughly 25,000 of those being citizens residing within the incorporated limits of Griffin, GA.

EXECUTIVE SUMMARY

The Griffin Police Department (GPD) continues to strive for excellence in community service once again in 2018. This report is a summation of the department's progress and changes, along with the city's crime data. Crime Activity is broken down into Part 1 and 2 crime categories, as defined by the Federal Bureau of Investigation (FBI), and then by types of crimes falling under each category. There are 8 crimes that the FBI defines as Part 1 crimes, separated into two categories. They are 1) Violent Crimes against Persons, which consists of: **Murder/Homicide, Rape, Robbery, and Aggravated Assault**; and 2) Crimes against Property, which consists of: **Burglary, Larceny/Theft, Motor Vehicle Theft and Arson**. There are 24 offenses that fall into the category that the FBI defines as Part 2 Crimes, which include: Other Assaults, Forgery, Fraud, and Drug Offenses (to name a few).

In 2018, the department saw a 9% decrease in Calls for Service compared to 2017, from 54102 to 53554. Traffic Crashes increased by 3% compared to 2017, from 1725 to 1765. There was 1 fatality reported. Traffic Citations saw a 22% reduction compared to 2017 from 10956 to 9687 (GSP wrote 267 fewer citations in the City of Griffin than the previous year). Also, Arrests increased in 2018 by 17% compared to 2017, from 3070 to 3695.

There have been several changes and updates throughout the department in 2018. This report presents this information by division and unit, along with each division and unit's progress for the year.

GRIFFIN CRIME 2018

Part 1 Crime in Griffin has decreased again, down 13% (204 crimes) from 1565 in 2017 to 1361 in 2018. Crimes Against Persons decreased significantly from 925 in 2017, to 800 in 2018 (14%) Crimes Against Property has decreased overall as well, down 7% (142 crimes) from 2273 in 2017, to 2131 in 2018.

**2018 was the second year that the Crime Analysis Plus system has been implemented which may give rise to some statistical differences in methodology used in previous years.*

Following tables depict the types of Part 1 Crimes reported in 2018 and 2017 as well as the clearance rate for each type of crime. You may note some differences in numbers in particular categories due to unfounded reports and reports exceptionally cleared after original reporting but these differences are statistically insignificant.



CRIME ANALYSIS

PART ONE CRIMES CLEARANCE

2018

Incident	Reported	Arrest	Ex. Cleared	Unfounded	Warrants	Suspended
Homicide	1	1	0	0	0	0
Rape	17	4	3	2	0	6
Robbery	34	4	2	0	0	21
Agg. Assault	164	84	17	3	7	43
Burglary	225	25	4	6	2	179
Theft	892	219	75	54	34	509
Vehicle Theft	51	8	8	7	0	27
Arson	2	2	0	0	0	0
Totals	1386	347	109	72	43	785

Clearance Rate: 41%

Clearance Rate Persons: 59%

Clearance Rate Property: 38%

2017

Incident	Reported	Arrest	Ex. Cleared	Unfounded	Warrants	Suspended
Homicide	2	1	0	0	0	0
Rape	4	3	0	0	0	3
Robbery	39	11	3	2	2	27
Agg. Assault	103	60	14	8	13	42
Burglary	226	29	9	4	2	220
Theft	1034	290	91	49	33	724
Vehicle Theft	52	11	9	11	3	36
Arson	3	1	0	1	0	1
Totals	1463	406	126	75	53	1053

Clearance Rate: 45%

Clearance Rate Persons: 79%

Clearance Rate Property: 41%

Change 2018 from
2017

-5.26%

-14.53%

-13.49%

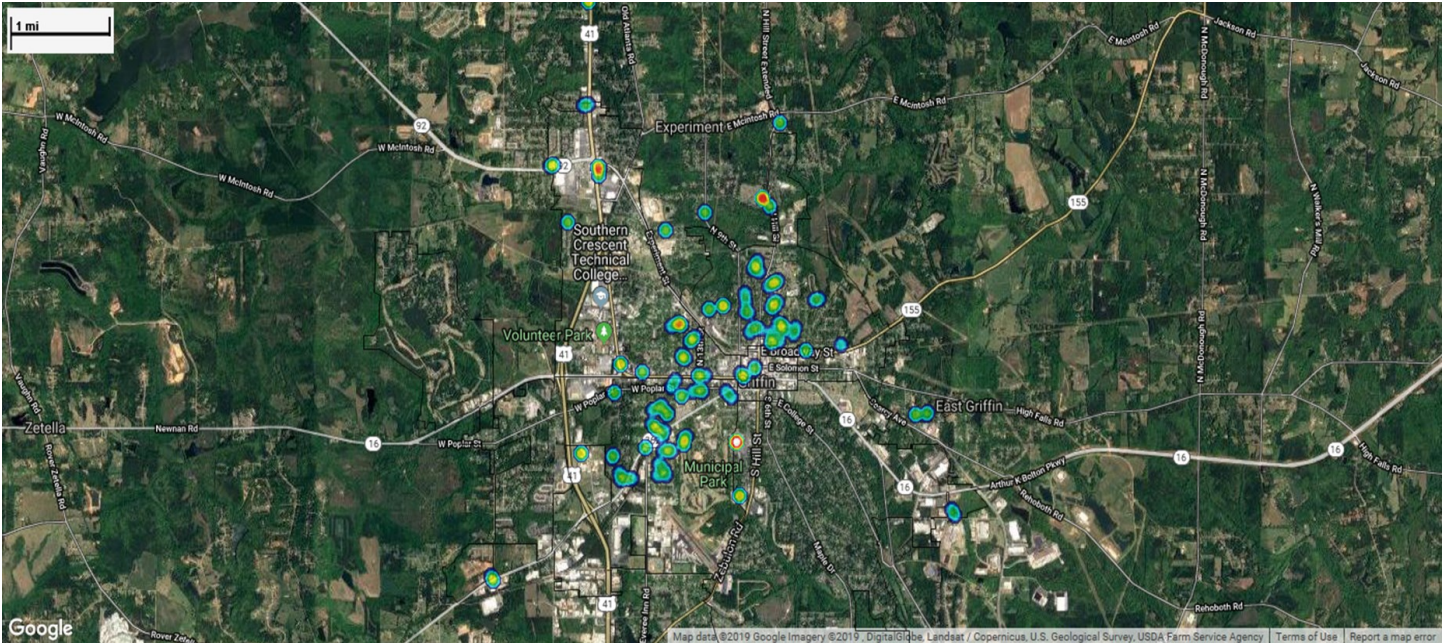
-4.00%

-18.87%

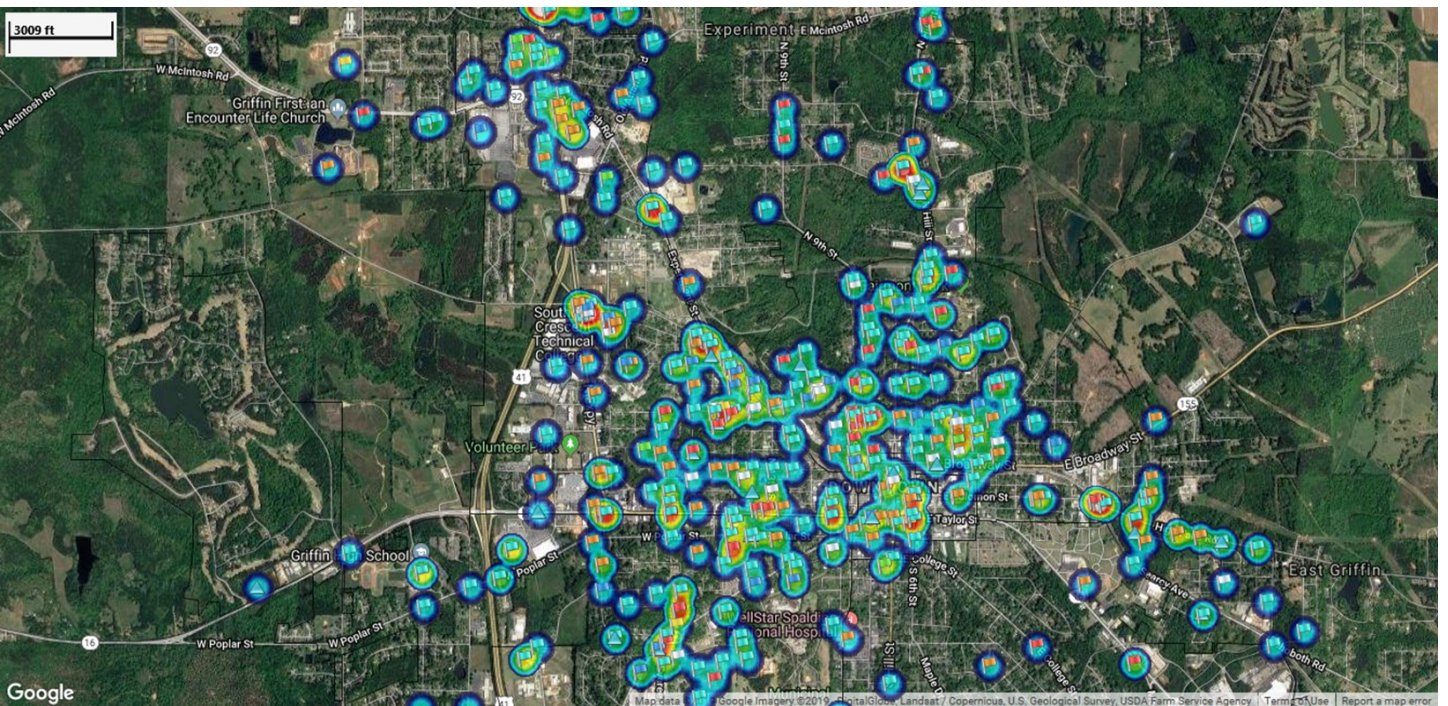
-25.45%



PART I CRIME Distribution Heat Map 2018



Drug and Gang Cases in 2018 Heat Map



The above maps depict the close relationship between drug activity and serious violent crime. While there are many crimes that take place (domestic, etc..) that do not have a relationship with drug and gang activity we find that most of our violent crimes have this nexus. When compared to one another the above maps illustrate this relationship which is why we focus our enforcement efforts in these areas, on these types of crimes, to reduce these very threats.



CRIME ANALYSIS

CRIME RATES PER 1,000 POPULATION

In order to provide yet another way of summarizing the distribution of crime in 2018, this section shows Part 1 crime rates for every 1,000 people in our community dating back to 2014. these rates are calculated by the number of crimes divided by the estimated population of 22,700 each for year, and multiplied by a power of ten, in this case by 1000, in order to obtain the per 1000 population rate. This approach is widely used by researchers and analysts to provide a more accurate reflection of criminal ac-

	2014	2015	2016	2017	2018
Homicide	4	1	2	2	1
Rape	17	14	14	4	17
Aggravated Assault	120	118	123	129	155
Burglary	275	223	214	258	219
Robbery	43	56	46	46	34
Larceny	1324	1219	1170	1061	887
Motor Vehicle	58	48	62	61	47
Arson	1	0	11	4	1
TOTALS	1842	1679	1642	1565	1361
Crimes Per 1000 Population	81.14537445	73.96475771	72.33480176	68.94273128	59.95594714

Since 2014, the crime rate per 1000 population has varied for Part I Crime ranging from 81.14 to 59.95 while the crime rate for Crimes Against Property has ranged from 57.1 to 85.2 per 1000. Crime has been on a downward trend nationally for the last several years (except in cities of more than 250,000) and this trend, along with some of our local initiatives appears to be having a positive impact on our Part I crime rates. You will note an approximate reduction of nearly 27% in Part I Crime in 2018 compared to crime in 2014.

OFFICE OF THE CHIEF



CALEA

The Commission on Accreditation for Law Enforcement Agencies (CALEA) was created in 1979 as a crediting authority through the joint efforts of major law enforcement executive associations throughout the country. The primary purpose of CALEA is to improve the delivery of public safety service by maintain a comprehensive body of law enforcement standards, establishing and administering an accreditation process, and recognizing professional excellence.

The CALEA accreditation program provides law enforcement agencies with an opportunity to demonstrate compliance with an established set of professional standards on a voluntary basis, and includes an external, objective evaluation of departmental operations.

There are approx. 18,000 state and local law enforcement agencies in the country. Around 800 agencies participate in the CALEA process and benefit from the collective experience of thousands of law enforcement managers and executives across the nation, and acts as a blueprint for better law enforcement institutions that are efficient, well equipped and responsive to the communities that they serve.

The Griffin Police Department has been State Certified since 1999 and received its first Commission on Accreditation in 2003. Since then, the agency has maintained its certification with the State and Accreditation with CALEA. This year, the agency will be preparing for their on-site in July with CALEA. and will receive their award this coming November.



OFFICE OF THE CHIEF

Office of Professional Standards

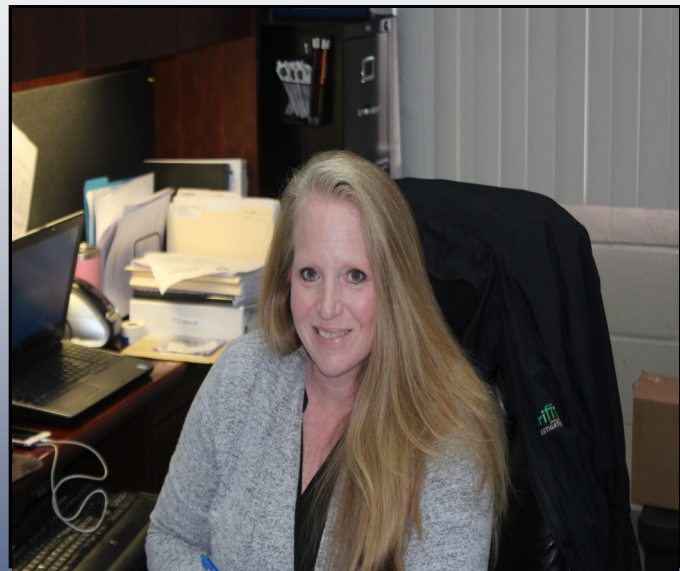
Police officers have to be solid in their commitment to themselves, their department and their community in order to effectively enforce the law. These actions require intelligence, common sense, and diligence all of which are earned through experience and applied training. Training builds better leaders through self-improvement, self-motivation and self confidence.

Sgt. Kelly McKinney has been with the Griffin Police Department for 13 years and has served in Uniform Patrol Division, Crime Suppression Unit, CID Division and currently assigned to the Office of the Chief handling recruitment, hiring and training.

Sgt. McKinney has over 2500 hours of police training. She is a Field Training Officer and has obtained certifications in Management, Supervision, Advanced, Intermediate and General instructor. She holds a Bachelor’s Degree in Criminal Justice from Thomas University and Master’s Degree in Public Administration from Columbus State University. She is a graduate of Professional Management Program and Command College.

Training Hours 2018	Training Hours 2017	% Change
11,958	6,871	+42.54%

New Hires	2018	2017	% Change
Males	20	14	+30%
Females	2	5	-60%





OFFICE OF THE CHIEF

Office of Professional Standards

To ensure the public trust, the Office of Professional Standards under the Office of the Chief was created and works directly from the Office of the Chief and was established to investigate allegations of employee misconduct and to provide the public with a fair and effective means to address their legitimate grievances against the agency or its employees. This office identifies policies and practices that are ineffective or outdated. The OPS is the Department's Internal Affairs Unit.

Employees that are involved in illegal, unethical, or unprofessional conduct are identified and appropriate action is taken to correct the problem. Investigations are intended to protect the reputation of individual employees, the agency, and the public from false or misleading information.

This table shows the Internal Investigations conducted within the last 12 months in comparison with the previous 12 months:

Internal Affairs	2018	2017	% Change
Formal Investigations	10	9	+10%
Harassment/Threats	0	1	-100%
Conduct/Demeanor	3	3	0%
Policy/Procedure	2	3	-33%
Use of Force	2	0	+200%
Official Code of Georgia	0	1	-100%
Other	3	1	+66.67%
Dispositions	2018	2017	
Unfounded	6	1	+83.33%
Exonerated	0	0	0%
Sustained	2	5	-60%
Not Sustained	2	1	+100%
Other/Policy/Warnings	0	2	-200%

These totals reflect miscellaneous reports and informal complaints/inquiries. These reports were assigned to internal affairs when needed to better facilitate customer service. Some IA cases involve multiple officers, classifications of complaints, and/or dispositions.



OFFICE OF THE CHIEF

O.P.S. maintains documentation of all use of force incidents and vehicle pursuits. These are reviewed by supervisors, Internal Affairs, and the Chief. During the CALEA evaluation in 2009, the department was informed of the new way that CALEA wants these reports reviewed. The following are the statistics for use of force and vehicle pursuits for 2017 and 2018.

Pursuits	2018	2017	% Change
Total Pursuits	5	1	+400%
Policy Compliant	5	1	+400%
Policy Non-Compliant	0	0	0%
Accidents	0	1	-100%
Injuries: Officer	0	0	0%
Suspects	0	1	-100%
Third Party	0	0	0%
Traffic Offense	2	1	+100%
Felony	5	0	+500%
Misdemeanor	0	1	-100%

Use of Force	2018	2017	% Change
Total Use of Force Incidents	31	28	+10.71%
Firearm	1 (animal)	3(all animals)	-200%
ASP Baton	0	0	0%
OC Spray	0	0	0%
Taser: Deployed/Not Deployed	29	15 deployed	+93.33%
Hands	4	8	-50%
K-9	0	2	-200%
Total Use of Force Arrests	29	25	16%
Complaints	2	3	33.33%
Felony	19	7	+171.43%

UNIFORM PATROL DIVISION

The Uniform Patrol Division encompasses four shifts of officers to provide 24-hour law enforcement services to the citizens of Griffin. Through directed and preventive patrol, the Uniform Patrol Division seeks to deter street crime and burglaries. Uniform officers are the initial responders to a wide range of calls for service. They conduct preliminary criminal and traffic accident investigations, and assist in processing crime scenes while enforcing criminal and traffic laws as well as ordinances enacted by the City of Griffin. Uniform Officers also assist citizens with medical and social problems through crisis intervention and/or referrals to the appropriate state or county agency.

These officers are engaged in a variety of problem solving initiatives and educational activities based on the department's commitment to community policing. Uniform Patrol are responsible for other events such as holiday enforcement details, community and business presentations.

School crossing guard assignments, and animal control fall under the control of the uniform patrol division.

Captain Mike Natale has been with the Griffin Police Department since 1992 and has served as a Uniform Patrol Supervisor, Criminal Investigator, Juvenile Investigator, School Resource Officer and Narcotics Unit Commander. Captain Natale during his tenure has also been tasked with budgeting, special projects and fleet management. He has a Bachelor's Degree in Criminal Justice from Valdosta State University and a Master's Degree in Public Administration from Columbus State University. He is currently assigned as the Patrol Division Commander.





Uniform Patrol Division	2018	2017	% Change
911 Dispatched Calls	25,144	32,113	-21.7%
Officer Initiated Calls	28,400	24,401	+16.39%
Total Calls for Service	53,544	56,514	-5.26%
Suspicious Person/Activity	203	336	-39.58%
Vehicle Unlocks	891	1,375	-35.2%
Roadway Accident Reports	1111	1089	+2.02%
Private Property Accident	655	638	+2.66%
Traffic Fatalities	1	0	+100%
Employee Accident Reports	25	18	+28%
Traffic/Misdemeanor Citations	8,410	9556	-11.99%
Traffic/Misdemeanor Warnings	818	1,389	-41.11%
Code Enforcement Citations	459	571	-19.61%
Total Citations Written	9,687	11,516	-15.88%
Drug Related Arrests	676	266	+154.14%
D.U.I. Arrests	95	66	+43.94%
Total Custodial Arrests	3,697	2,992	+23.56%



UNIFORM PATROL DIVISION

Animal Control

The Griffin Police Department has two full time Animal Control Officers whose responsibility is to enforce animal control ordinance by

- Capturing and impounding animals at large
- Collecting dead animals
- Investigating reports of neglect, animal attacks, cruelty, and other complaints
- Respond to all 911 animal calls for service
- Participate in handling of animals during investigations.

Yearly, animal control handles over 1,000 calls for service



Tyrone Evans

Stetman White





CRIMINAL INVESTIGATIONS DIVISION AND JUVENILE INVESTIGATIONS

The CID Division consists of 10 detectives all specializing in certain, areas of crimes. These crimes include: Homicides, Rapes, Robberies, Aggravated Assaults, Burglaries, Thefts, Auto Thefts, Forgery & Frauds, juvenile offenses and any other crimes against an individual or property, as well as Pawnshop Management. C.I.D. is also proficient in surveillance, crime analysis and intelligence gathering.

Investigators of the Police Department are tasked with both following up on reports of criminal acts as well as taking proactive measures to prevent crime from occurring. Detectives are responsible for a variety of case development activity to include locating and recovering stolen property, gathering forensic evidence from crime scenes, processing the forensic evidence, victim/witness interviews, and interrogating criminal suspects. Detectives compile and organize this information into a format easily presented to the courts for prosecution.

In many instances there was more than one arrest made on a case. Furthermore, cases are cleared continually and investigators work closely with other agencies both local and state, such as The Department Of Family And Children Services.

All juvenile cases are investigated to determine in the preliminary assessment of whether to file formal charges and handle non-criminal behavior such as runaway, curfew, as well as truancy.

The agency works along with community leaders to provide intervention programs to assist in neglect and abuse.

Captain Homer Daniel is a 34 year veteran of the Griffin Police Department. He has a Master's Degree Public Administration and is POST Certified Instructor. Captain Daniel has taught numerous criminal justice courses at Southern Crescent Technical College.

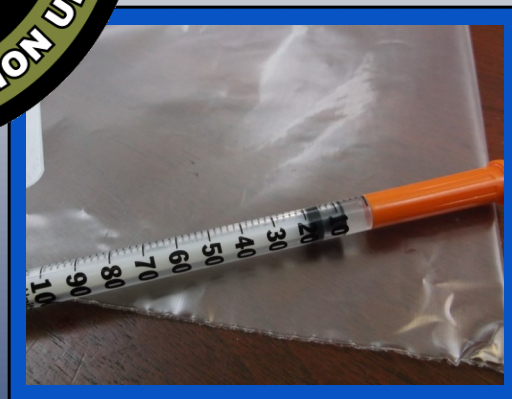
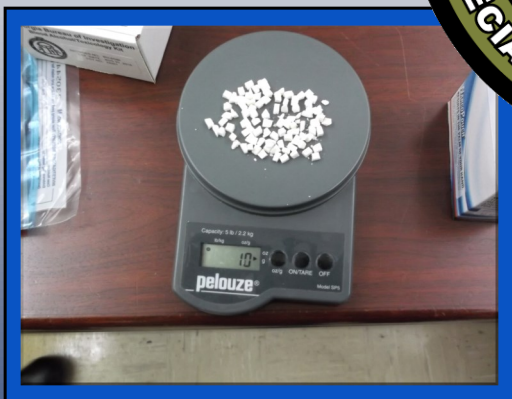
Throughout his career, he has served in various departments including Patrol Division, SRO and the Community Oriented Policing program. With a strong desire to help children in the community, he volunteers at various Spalding County Elementary Schools in a reading to student program. He is currently assigned to the Criminal Investigations Unit as their Division Commander.





SPECIAL INVESTIGATIONS UNIT

The Special Investigations Unit of the Griffin Police Department is made up of the K-9 and C.A.G.E Divisions. The combination of the SIU Division is designed to work narcotics, vice, organized crime, gang activity, and other investigations that may require covert techniques. SIU routinely conducts undercover operations that result in search warrants being executed and arrests made. At times, the SIU reaches out to State and Federal agencies to partner in investigations and prosecution. This enhances penalties on crimes such as illegal gun sales and gang activity. The unit works with surrounding Sheriff's offices and Police departments on shared suspects that may live in one jurisdiction but commit crimes in the other or both. It is the SIU's mission to efficiently and effectively detect this type of criminal activity and prosecute those arrested to the fullest, resulting in a safer community and higher quality of life for the residents and visitors of Griffin.





SPECIAL INVESTIGATIONS UNIT

2018								
Month	Arrests	Marj.	Cocaine	Meth	Currency	Guns	Vehicle	S/W
January	36	69.4gg	9.2gg	18.6gg		3		2
February	26	53.49gg	11.15gg	0.66gg		2		4
March	33	747.71gg	32.21gg	25.9gg	\$7,560.07	2	1	5
April	36	67.56gg	45.92gg	0gg	\$1,084.69	3	2	2
May	23	79.8gg	0gg	18.5gg		1		2
June	27	211.85gg	3gg	0gg		3		1
July	40	299.87gg	3.4gg	30.02gg	\$2,200.00	2		1
August	25	121.88gg	52.99gg	5.0gg	\$1,550.00	1	2	4
September	44	131gg	3.84gg	6.5gg	\$s,599.00	3	3	1
October	48	796.18gg	0gg	50gg	#1,257.00	5		3
November	22	156.58gg	15.9gg	8.5gg	\$1,583.00	3	3	1
December	31	189.8gg	8.7gg	38.1gg	\$4,570.23	2		2
Totals	391	2952.12 gg	186.31 gg	201.78 gg	\$22,403.99	30	11	28
Seized marijuana street value (based on \$10 per gram)						\$29,251.20		
Seized cocaine street value (based on \$50 per gram)						\$8,170.00		
Seized Meth. street value (based on \$40 per gram)						\$6,071.20		
Misc. Pills street value (based on \$10 per pill)						\$4,680.00		
Total street value of drugs seized						\$48,172.40		

2017								
Month	Arrests	Marj.	Cocaine	Meth	Currency	Guns	Vehicle	S/W
January	3	0	0		\$141,606.00	0	0	18
February	3	45.22gg	12.75gg		0	0	0	3
March	7	0.7gg	4.25gg		\$613.00	0	0	6
April	17	12.7gg	33.65gg		\$3,800.00	0	0	7
May	10	55.74gg	9.69gg		\$579.00	0	0	5
June	26	126.65gg	13.54gg		\$3,900.00	3	0	18
July	17	798.96gg	18.42ggms		\$2,631.01	0	0	13
August	14	12.75ggms	0		0	0	0	6
September	17	6gg	4.4gg		\$3,000	5	2	0
October	21	32.22gg	20.96gg		0	1	1	0
November	27	79.69gg	2.8gg		\$2,573.10	1	0	5
December	34	372.88gg	32.28gg		\$3,819.00	1	1	6
Totals	196	1538.11gg	152.74gg	28.1gg	\$162,521.11	11	4	87
Seized marijuana street value (based on \$10 per gram)						\$15,388.80		
Seized cocaine street value (based on \$100 per gram)						\$15,274.00		
Seized Meth. street value (based on \$150 per gram)						\$45,631.00		
Misc. Pills street value (based on \$15 per pill)						\$2,210.00		
Total street value of drugs seized						\$78,503.80		



SPECIALIZED UNITS



SWAT TEAM



The Griffin Police Department SWAT team responds to incidents that are deemed “high risk” or are considered to be outside of the realm in which a normal response would be practical, or is deemed unsafe. Such incidents include hostage situations, barricaded suspects, high risk warrant service, dignitary protection, surveillance, search warrant executions and other tactical situations.

The SWAT team is not a stand-alone unit; instead its members are assigned to each shift and division where they perform duties as uniformed patrol officers and criminal investigators until they receive a call to respond to a tactical situation.

Team members training includes dynamic and static entry methods, hostage negotiations and rescue, dignitary protections; use of force, less than lethal force, full auto weapons, tactical rifle, and counter sniper measures.

SWAT operations is under the supervision of Lieutenant John Hayes and Sgt. Colt Tolen.



CRIME SCENE UNIT



Sgt. Jennifer Michel supervises the crime scene investigation and evidence processing unit. Along with responding to major crime scenes, they are also tasked with collecting, preserving and photographing evidence, collecting certain items of video evidence, and processing the evidence for court procedures.

The Crime Scene Investigators are also required to assist the District Attorney in prosecuting criminal cases and act as a liaison with the Georgia State Crime Laboratory.

Category	2018
Number of Crime Scenes (CSI Duty Hours)	204
Number of Crime Scenes (CSI Called Out)	84
Number of Crime Scenes (Assisted Other Jurisdictions)	6
Number of Crime Scenes (Patrol Division Response)	783
Total Crime Scenes Responded to in the City	1,071
Number of Hours Processing Evidence	
	559
Number of All Other Assistance	54
Hours in Court	78
Hours of Training	292
Number of Citizen Fingerprints	53
Number of Reports Cleared	268
Marijuana Testing/Cases	20
Offenders Identified by Fingerprints/DNA	
	35
Latent to Offender Matches	18



EVIDENCE AND PROPERTY



Karen Jett started with the Griffin Police Department back in 1972 when she became the first female officer. After six year, Ms. Jett went on to wok for the state where she retired.

In August of 2018 Ms. Jett was hired part-time to work in the property and evidence room .

Evidence Statistics	2018	2017	%
C.I.D. Evidence	718	865	-16.99%
Taser Cartridges	13	12	+8.33%
Evidence Returned to Owner	137	120	+14.17%
Drugs Retained in Evidence Room	900	454	+98.24%
Guns Handled	115	100	+15%
Bicycles Donated to Charity	0	0	0%
Bicycles in Property Room	8	9	-11.11%
Cases Sent to Crime Lab	203	171	+18.71%
Found Property	82	39	+110.26%
Case Disks	993	928	+6.90%





SRO AND D.A.R.E.

The Griffin area school system is comprised of eleven elementary schools, four middle schools, two high schools, and one alternative school. Currently there are two officers assigned as SRO'S. The D.A.R.E program is designed to provide young people with the skills necessary to resist peer pressures. This is a partnership between schools and the Griffin Police Department and is a successful national program.

- During 2018, approx. 500 students from 6 elementary schools participated and graduated from the DARE program organized by Officer Zuke of the Griffin Police Department.



WARRANT DIVISION

The Warrant Division is responsible for serving warrants that are issued by the city's Municipal Court. On city court days, the warrant division provides a bailiff for court and a transport officer. In addition, this Division is responsible for transporting wanted persons arrested in other jurisdictions back to Griffin.

	2018	2017	Diff.	%
Warrants Issued	734	572	162	+22.07%
Warrants Served	426	317	109	+25.59%
Warrants Dismissed	99	62	37	+37.37%
Outstanding Warrants	209	193	16	+7.66%



Lieutenants



Lieutenant Joe Hudson Patrol Division



Lieutenant Gene Mathews Patrol Division



Lieutenant Matt McFarlan Patrol Division



Lieutenant Brian Jones Patrol Division



Lieutenant Daniel Jett– Criminal Investigations



CIVILIAN STAFF



Mary Matthews Records Clerk



Becky Rigsby SIU Secretary



Sheryl Brown Warrant Division



Lakesia Davis Crime Analyst Clerk



Ken Entrekin Record Clerk



Diane Martin Secretary to the Chief of Police



MEDIA CONTACTS

Sgt. Chris Wilson
Griffin Police Department
868 West Poplar Street
Griffin, GA 30224
770-229-6450
cwilson@cityofgriffin.com

www.cityofgriffin.com

