

POPULAR ANNUAL FINANCIAL REPORT

FISCAL YEAR ENDED JUNE 30, 2020

CITY OF GRIFFIN, GEORGIA

The logo for the City of Griffin, Georgia, features the word "Griffin" in a bold, green, sans-serif font. The letter "i" has a white dot, and the letter "n" has a white dot. The letter "f" has a white dot, and the letter "i" has an orange dot. The logo is positioned above a green horizontal bar.

Growing, **TOGETHER**

TABLE OF CONTENTS

Financial Report Message	3
Vision, Mission, Values	4
Quick Facts	5
Location	6
Organizational Chart	7
Elected Officials (Board of Commissioners)	8
Awards	9
How Funds Flow	10-11
Financial Information	12-16
Statistics Section	17
Purpose of Financial Report	18
Contact Information	19
The Complete Annual Budget and Comprehensive Annual Financial Report are available at City Hall and the City's website www.cityofgriffin.com.	

FINANCIAL REPORT MESSAGE

We are pleased to present the City of Griffin's Popular Annual Financial Report (PAFR) for the fiscal year ended June 30, 2020. This is the City's tenth PAFR, and is formulated as an easy to read version of the City's Comprehensive Annual Financial Report (CAFR) that we publish on a yearly basis.

The Comprehensive Annual Financial Report (CAFR) is a detailed account of the City's financial statements, notes, schedules, and statistics. The CAFR was prepared in conformance with Generally Accepted Accounting Principles (GAAP) and was audited by Mauldin & Jenkins, Certified Public Accountants, LLC, 439 Mulberry Street, Post Office Box 1877, Macon Georgia 31202-1877.

The CAFR received an unmodified opinion. A copy of our CAFR can be found on the City's website under Departments, Administrative Services, Finance, Finance Reports:

<https://cityofgriffin.com/Departments/AdministrativeServices/Finance/FinanceReports/ComprehensiveAnnualFinancialReports.aspx>.

The Popular Annual Financial Report (PAFR) provides citizens with an overview of the City's revenues, expenditures, and general information, in a simplified interpretation of the CAFR. The PAFR is prepared by the Department of Administrative Services, Finance and Accounting staff and is not obligated to be audited under GAAP rules.

Thank you for your interest in the City of Griffin's government and its functions. Please feel free to comment or offer suggestions on the PAFR to Markus Schwab, CPA/CITP/CGMA, Chief Financial Officer, email mschwab@cityofgriffin.com.

Respectfully submitted,
Kenny Smith
City Manager

VISION | MISSION | VALUES

VISION

The City of Griffin shall be a model of excellence in local government; and a safe, well-planned community with equal opportunity for all.

MISSION

In partnership with our community, the mission of the City of Griffin is to protect and enhance the quality of life by providing a high level of service in an efficient and responsive manner for all the citizens.

VALUES

We believe in honest, open, and democratic government.

We are dedicated to the highest ideals of honor and integrity in order to merit the respect, trust, and confidence of the citizens of Griffin.

We believe our primary responsibility is to those who live, work, visit, or otherwise come in contact with our City. We are committed to enhancing the quality of life by providing exemplary services.

We believe that the employees of the City are its most important resource and through them, we will accomplish our mission and vision. We will support the employees with dignity, respect, and fairness.

We believe it is important to listen to our citizens and be sensitive and responsive to their needs.

We believe that proper planning, training, and teamwork will fulfill our mission and vision for the future of the City of Griffin.



QUICK FACTS



Services: Police, Fire, Electric, Water, Sewer, Storm Drainage, Streets, Solid Waste, Airport, Parks, Recreation, Planning and Economic Development, and Fiber networks.	
Form of Government: Manager / Commission	
Governing Body: Mayor and 6 District Commissioners are elected to four year terms	
Population – (2017 est.):	22,770
Number of Households – 2019:	8,554
Median Age – (2017 Citi-Data):	33.3
Median Household Income – (2017 Citi-Data):	\$35,036
Median Home Value (2017 City-Data):	\$104,795
Incorporated (square miles):	14.5
Acres of Parks:	190
Operating Budget – 2020:	\$115M
Employees:	464
2020 Operating Millage Rate (City):	7.083
2020 Total Operating Millage Rate (State, City, County, & School):	40.695
2020 Sales and Use Tax Rate:	7%
Incorporated:	1843

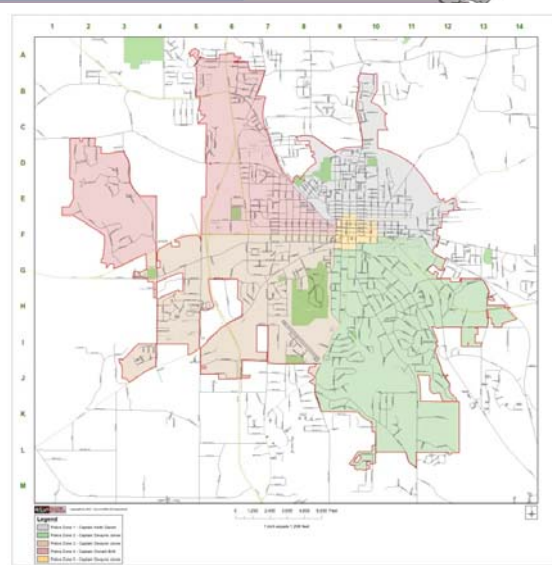
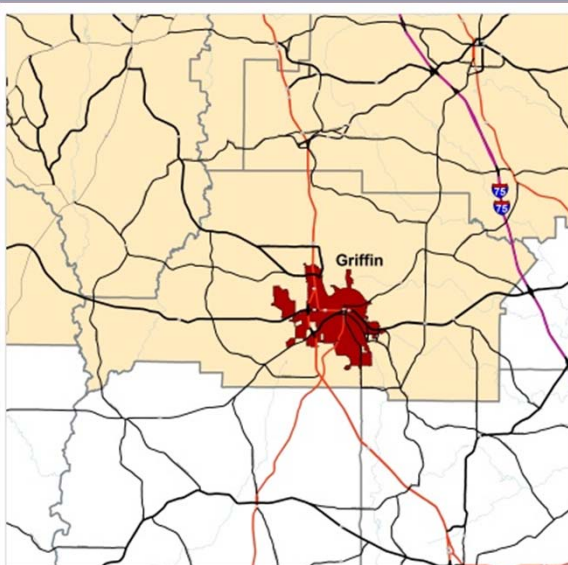
LOCATION

The City of Griffin is located in Spalding County along Highway 16 just west of I-75 with easy access to Griffin-Spalding County Municipal Airport.

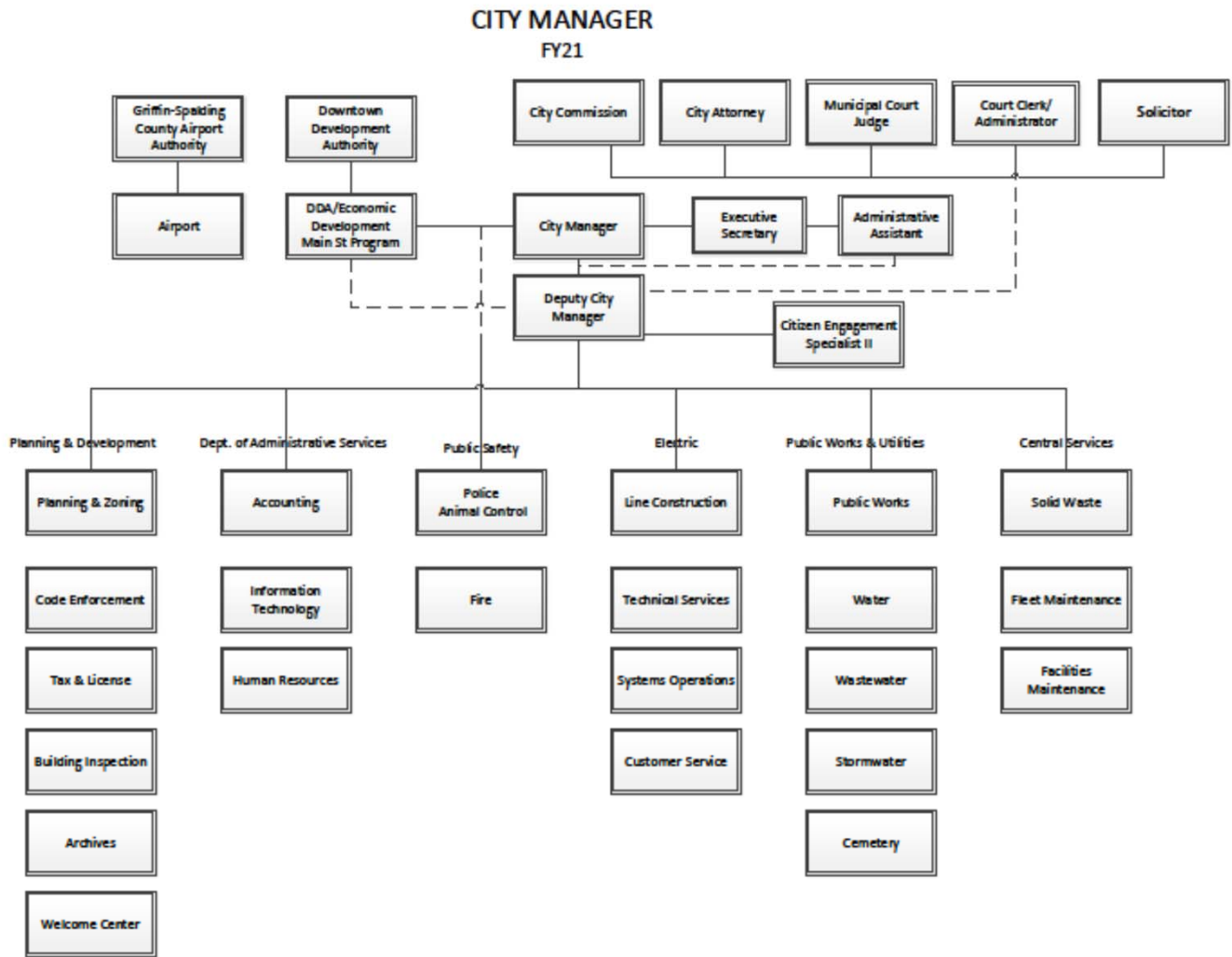
Griffin is a major employment center for Spalding County and serves as a regional retail and service provider for counties south of the Atlanta metropolitan area.

The City's location has several advantages that have helped sustain its economy over the years.

- Proximity to Hartsfield-Jackson Airport
- Midway between Interstates 75 and 85
- Access to the amenities of Atlanta while retaining its historic heritage
- Important regional center midway between the cities of Atlanta, Macon, and Columbus



ORGANIZATION CHART



Board of Commissioners



Douglas S. Hollberg,
Mayor



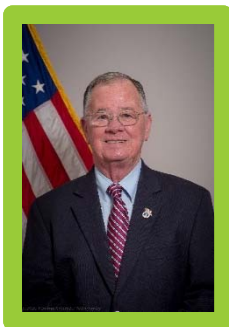
Cynthia Reid Ward,
Commissioner
District 1



Cora Flowers,
Commissioner
District 2



Holly Murray,
Commissioner
District 3



David Brock,
Commissioner
District 4



Truman Tinsley III,
Commissioner
District 5



Rodney McCord,
Commissioner
District 6

AWARDS

Government Finance Officers Association (GFOA) Award for Excellence in Financial Reporting for Comprehensive Annual Financial Report (CAFR) – 2019, 2018, 2017, 2016, 2015, 2014, 2013, 2012, 2011, 2010, 2009, 2008, 2007, 2006, 2005, and 2004

Government Finance Officers Association (GFOA) Award for Outstanding Achievement in Popular Annual Financial Reporting (PAFR) – 2019, 2018, 2017, 2016, 2015, 2014, 2013, 2012, 2011, 2010, 2009, 2008, 2007, and 2006



Government Finance Officers Association

Award for Outstanding Achievement in Popular Annual Financial Reporting

Presented to

City of Griffin

Georgia

For its Annual Financial Report
for the Fiscal Year Ended

June 30, 2019

Christopher P. Morill

Executive Director/CEO

HOW FUNDS FLOW

Property tax dollars, charges for services, and utility fees flow through the City to provide services throughout the community.

Payments received from Taxpayers/Customers

City Commission approves/adopts annual budget

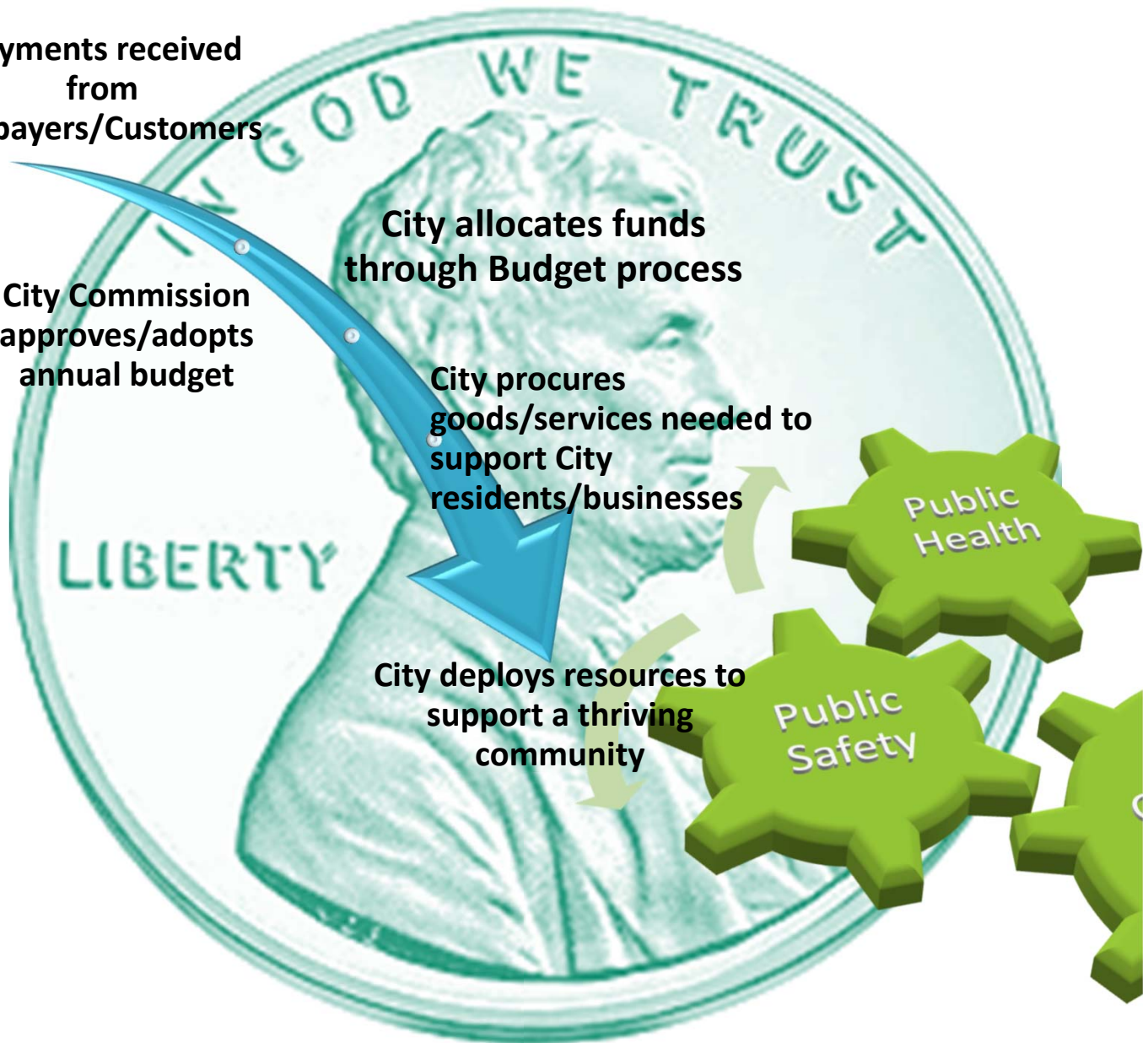
City allocates funds through Budget process

City procures goods/services needed to support City residents/businesses

City deploys resources to support a thriving community

Public Health

Public Safety



HOW FUNDS FLOW

The City, through its services, transforms funds received into gears that drive excellence in governance, community outreach and ultimately to economic development.



FINANCIAL INFORMATION

The City's Net Position reflects financial strength and fiscal health as of June 30, 2020. Assets exceeded liabilities by \$172.8 million (not including deferred inflows or outflows). Total assets increased by \$18.8 million and the City's liabilities increased by \$11.5 million, largely due to debt issuance in Water Wastewater Utility Fund.

City of Griffin's Net Position as of June 30th

(in thousands of dollars... '000s)

	2020	2019	2018	2017	2016
Current and other assets	\$ 117,435	\$ 104,072	\$ 93,552	\$ 88,582	\$ 89,285
Capital assets	203,421	197,969	183,138	170,106	149,994
Total Assets	320,856	302,041	276,690	258,688	239,279
Deferred outflows of resources	13,891	5,323	6,407	5,320	7,027
Other liabilities	11,934	14,302	13,303	11,111	13,688
Long-term liabilities outstanding	136,148	122,298	113,448	113,186	101,123
Total Liabilities	148,082	136,600	126,751	124,297	114,811
Deferred inflows of resources	3,218	5,960	3,934	97	-0-
Net position:					
Net investment in capital assets	110,582	105,093	96,620	85,540	86,575
Restricted	18,603	16,181	18,026	17,790	15,484
Unrestricted	54,262	43,530	37,766	36,285	29,436
Total net position	\$ 183,447	\$ 164,804	\$ 152,412	\$ 139,615	\$ 131,495

The City's Changes in Net Position reflects the financial activity for the City during the fiscal year ended June 30, 2020.

This statement presents information to show how the City's net position changed during the year as a result of financial activity (i.e. revenues and expenses). This is a summarized version of the more detailed statement found in the City's complete Comprehensive Annual Financial Report.

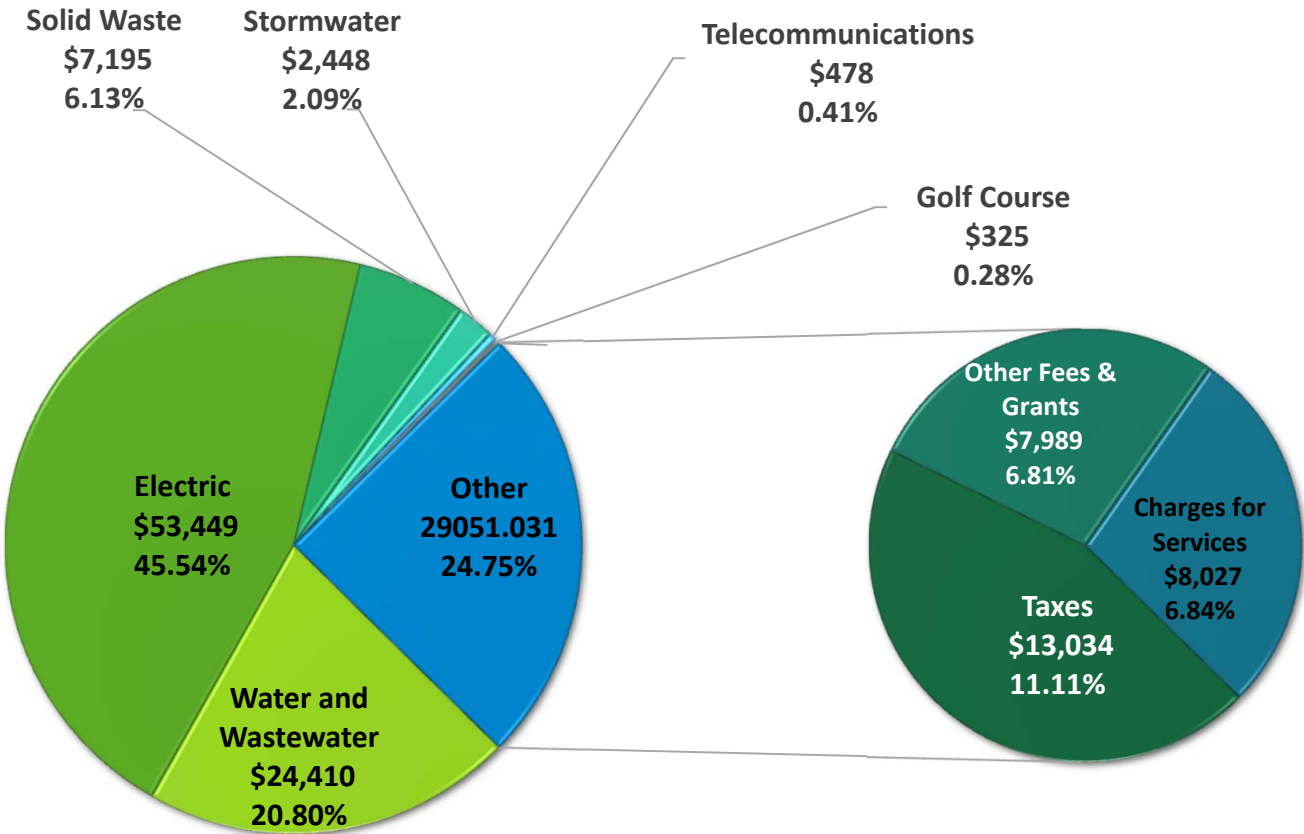
Changes in Net Position for the Fiscal Year Ended June 30th

(in thousands of dollars... '000s)

	2020	2019	2018	2017	2016
Revenues	\$ 119,094	\$ 113,727	\$ 106,744	\$ 102,349	\$ 104,369
Less: expenses	100,450	101,337	92,519	94,229	89,693
Increase (decrease) in net position	18,644	12,390	14,225	8,120	14,676
Prior period adjustment			-1,427	0	0
Net position, beginning as restated	164,803	152,413	139,615	131,495	116,819
Net position, end of year	\$ 183,447	\$ 164,803	\$ 152,413	\$ 139,615	\$ 131,495

This statement shows that the City's change net position increased each year for the past five years. This reflects a strong fiscal mindset and stewardship in areas that fund future capital improvements. Revenues increased \$5.4 million from 2019, and expenses decreased \$0.9 million.

FINANCIAL INFORMATION

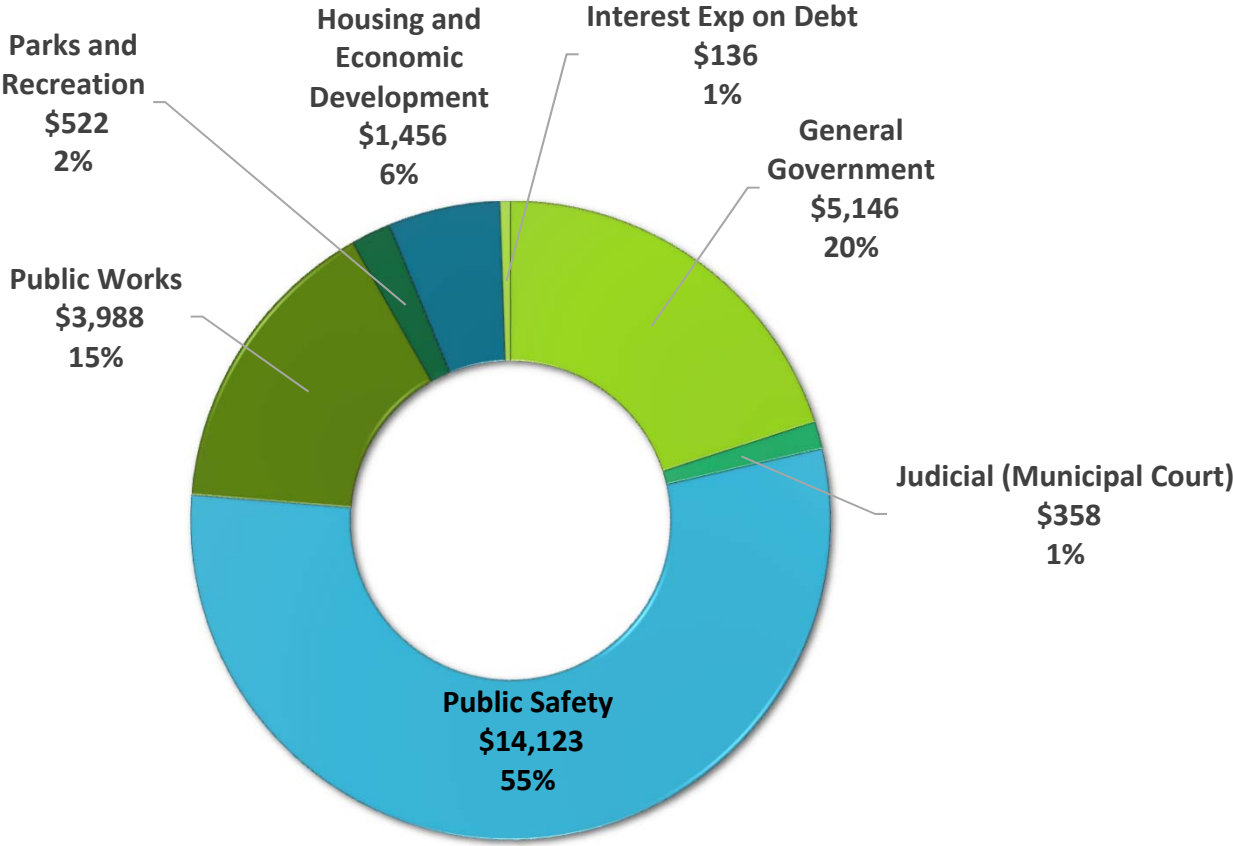


Revenues

(in thousands)

Data comes from Statement of Activities reported in the Government-wide statements. See Comprehensive Annual Financial Report, page 15.

FINANCIAL INFORMATION



\$ 8,066	Police
5,544	Fire
<u>513</u>	Other Safety Services
\$ 14,123	Total Public Safety

GENERAL FUND EXPENDITURES

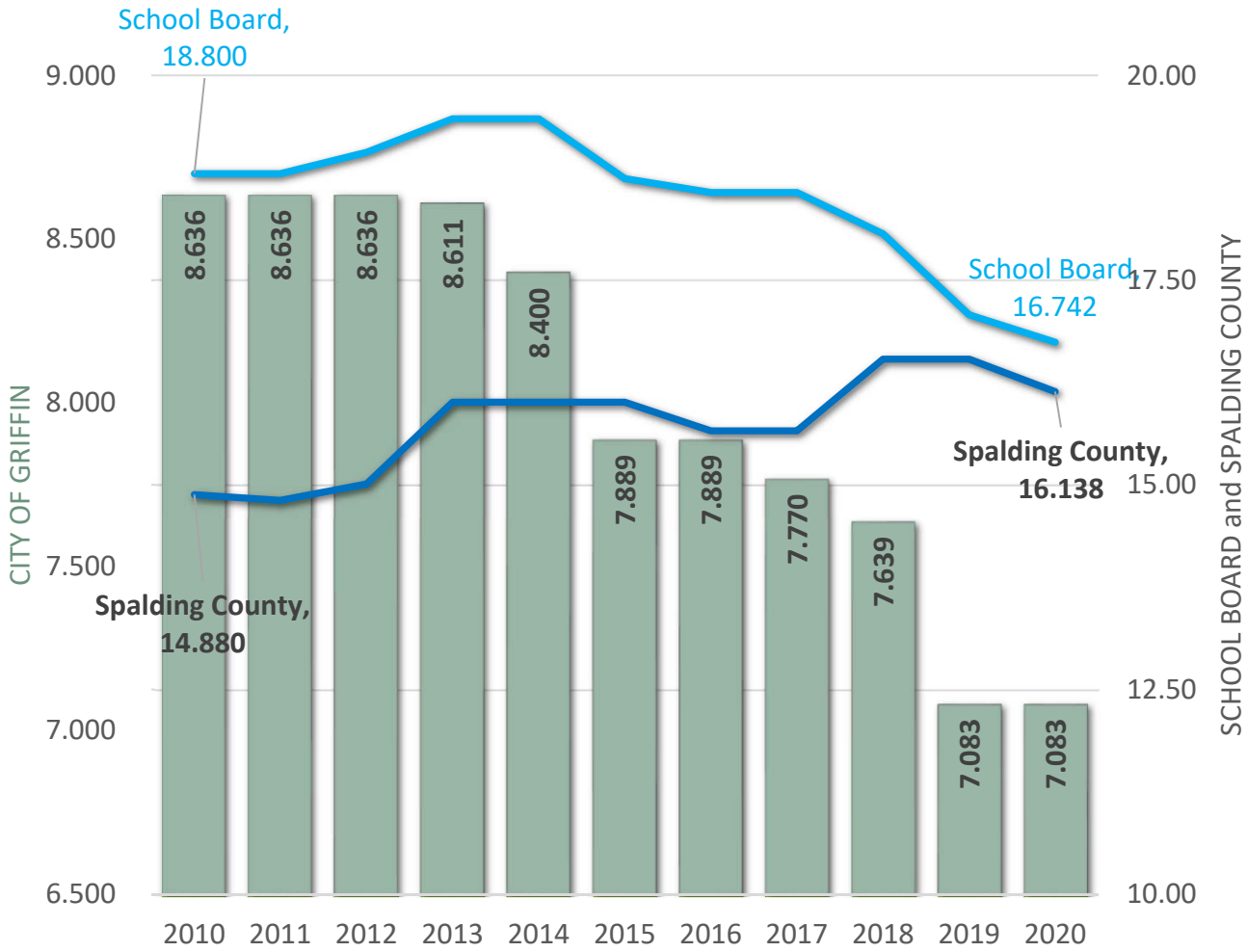
(In thousands)

Data comes from Statement of Revenues, Expenditures and Changes in Fund Balances – Budget (GAAP Basis) and Actual.

See Comprehensive Annual Financial Report, page 19.

FINANCIAL INFORMATION

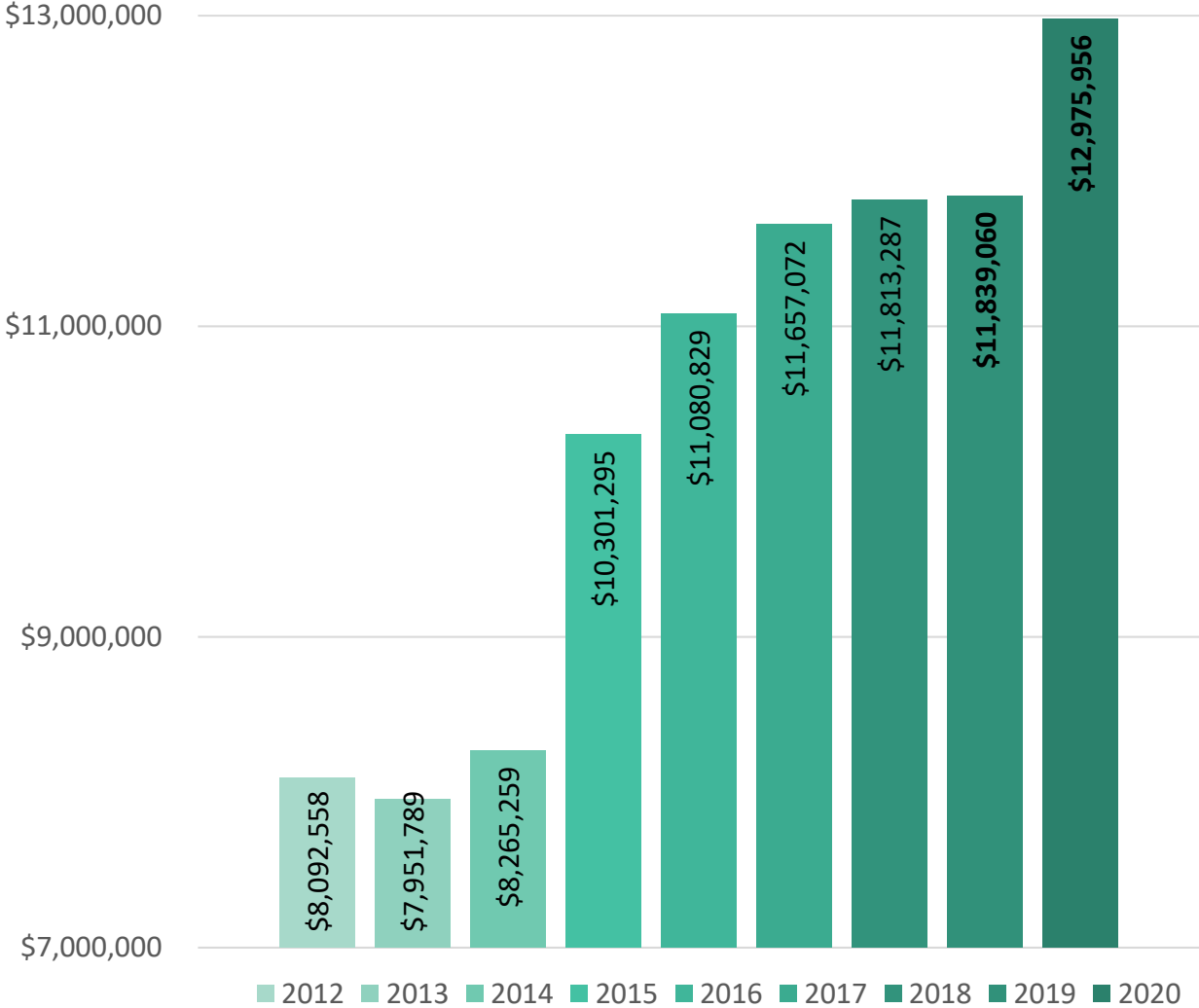
PROPERTY TAX MILLAGE RATES



Data comes from Statistical Section, page 125, of the Comprehensive Annual Financial Report.

FINANCIAL INFORMATION

General Fund FUND BALANCE HISTORY by Fiscal Year



Data comes from Statistical Section, pages 120-121,
of the Comprehensive Annual Financial Report.

STATISTICS SECTION

2020

Top Ten Employers	Employees	Rank	Percentage
			of Total Employment
Catapillar, Inc.	900	1	4.33%
CareMaster Medical	600	2	2.88%
Norcom	280	3	1.35%
1888 Mills	278	4	1.34%
AEP Industries	250	5	1.20%
Hoshzaki America Inc	240	6	1.15%
Supreme Corporation	200	7	0.96%
Bandag	170	8	0.82%
Vernay Manufacturing	165	9	0.79%
Coveris LLC	160	10	0.77%
	<u>3,243</u>		<u>15.59%</u>

Total Employment 20,800



Principal Property Taxpayers	Taxable Assessed Value (in thousands)	Rank	Percent of Total City Taxable Assessed Value
North Griffin Square	\$ 75,770	1	12.60%
Walmart	62,888	2	10.46%
Transcontinental	62,492	3	10.39%
Bridgestone Bandag	56,600	4	9.41%
RCG-Griffin LLC	48,164	5	8.01%
International Paper	42,771	6	7.11%
Griffin Crossroads	36,777	7	6.12%
Kroger	36,108	8	6.00%
Southwood Walden PT	32,008	9	5.32%
Westdale Griffin Cross	31,249	10	5.20%
	<u>\$ 484,826</u>		<u>80.62%</u>

Data comes from Statistical Section, pages 128-138 of the Comprehensive Annual Financial Report.

PURPOSE OF REPORT

The purpose of the Popular Annual Financial Report (PAFR) is to provide an overview of the financial position of the City of Griffin, as reported in the City's Comprehensive Annual Financial Report (CAFR), along with other information of interest. The financial information presented here is in summarized and condensed form and does not substitute for the City's CAFR. The CAFR outlines the City's financial position and operating activities each fiscal year presented in conformity with generally accepted accounting principles (GAAP). The PAFR does not conform to GAAP and associated standards as set forth by the applicable governing bodies, but is suitable for those readers who prefer an overview or summary of the City's government and its financial condition. Some of the information is from the City's Annual Budget. The City's CAFR received the award for outstanding financial reporting from the Government Finance Officers Association.

The CAFR, Annual Budget, and PAFR are available at City Hall and the City's website at www.cityofgriffin.com.



CONTACT INFORMATION

Accounting	770.229.6401	Fire Rescue	770.229.6415	Police	770.229.6450
Administrative Services	770.229.6425	Station One- 314 North Hill Street	770.229.6417	Public Works	770.229.6424
Airport	770.227.2928	Station Two – 1430 Ellis Rd.	770.229.6416	Sign Shop	770.229.6632
Building Inspections & Permits	770.233.4130	Station Three- 101 Crescent West	770.229.6414	Solid Waste	770.229.6421
Building Safety	770.233.4130	FOG (Fats Oils Grease)	678.692.0404	Storm Water	770.229.6424
Cemetery	770.229.6410	Fleet Management	770.233.4399	Streets	770.229.6413
City Manager	770.229.6408	Human Resources	770.229.6400	Tax and License	770.229.6402
Code Enforcement	770.233.4130	Information Technology	770.229.6614	Trash Collection	770.229.6421
Customer Service / Billing	770.229.6403	Municipal Court	770.233.4124	Watershed Management	770.229.6423
Economic Development	770.228.5356	Planning & Development	770.233.4130		



Growing, **TOGETHER**
Thinking, **TOGETHER**
Celebrating, **TOGETHER**
Thriving, **TOGETHER**
Playing, **TOGETHER**
Working, **TOGETHER**
Helping, **TOGETHER**
Learning, **TOGETHER**
Shopping, **TOGETHER**
Exploring, **TOGETHER**
Achieving, **TOGETHER**
Discovering, **TOGETHER**
Building, **TOGETHER**
Creating, **TOGETHER**

CITY OF GRIFFIN

100 SOUTH HILL STREET

PO BOX T

GRIFFIN, GEORGIA 30223

770.229.6401

WWW.CITYOFGRIFFIN.COM

