



Griffin-SPALDING COUNTY AIRPORT
GRIFFIN, GEORGIA

Michael Baker INTERNATIONAL

Designer:
JCD, TGM
Technician:
TGM
Checked by:
JCD
Project Number:
143849

- NOTES**
- COORDINATES SHOWN ARE IN NAD83.
 - ELEVATIONS SHOWN ARE IN NAVD88 AND ARE ABOVE MEAN SEA LEVEL (AMSL).
 - OBSTRUCTION DATA SOURCE: PHOTO SCIENCE, FLOWN OCTOBER 22, 2014.
 - BASED ON GENERAL PART 77 SURVEY FOR PLANNING PURPOSES ONLY. SURVEY BASE IS NOT A DETAILED OBSTRUCTION ANALYSIS COVERING ALL INDIVIDUAL OBSTRUCTIONS.
 - REFER TO THE AIRPORT AIRSPACE DRAWING FOR FURTHER OUT OBSTRUCTIONS.
 - FAA CLEARANCE REQUIREMENTS NOTE: SECTION 77.23 OF FEDERAL AVIATION REGULATIONS (FAR) PART 77 SPECIFIES CLEARANCE REQUIREMENTS FOR ROADS, RAILROADS, AND WATERWAYS AS FOLLOWS:
 - A. SEVENTEEN FEET FOR AN INTERSTATE HIGHWAY THAT IS PART OF THE NATIONAL SYSTEM OF MILITARY AND INTERSTATE HIGHWAYS WHERE OVERCROSSINGS ARE DESIGNED FOR A MINIMUM OF 17 FEET VERTICAL DISTANCE.
 - B. FIFTEEN FEET FOR ANY OTHER PUBLIC ROADWAY.
 - C. TEN FEET OR THE HEIGHT OF THE HIGHEST MOBILE OBJECT THAT WOULD NORMALLY TRAVERSE THE ROAD, WHICHEVER IS GREATER, FOR A PRIVATE ROAD.
 - D. TWENTY-THREE FEET FOR A RAILROAD, AND
 - E. FOR A WATERWAY OR ANY OTHER TRAVERSE WAY NOT PREVIOUSLY MENTIONED, AN AMOUNT EQUAL TO THE HEIGHT OF THE HIGHEST MOBILE OBJECT THAT WOULD NORMALLY TRAVERSE IT.

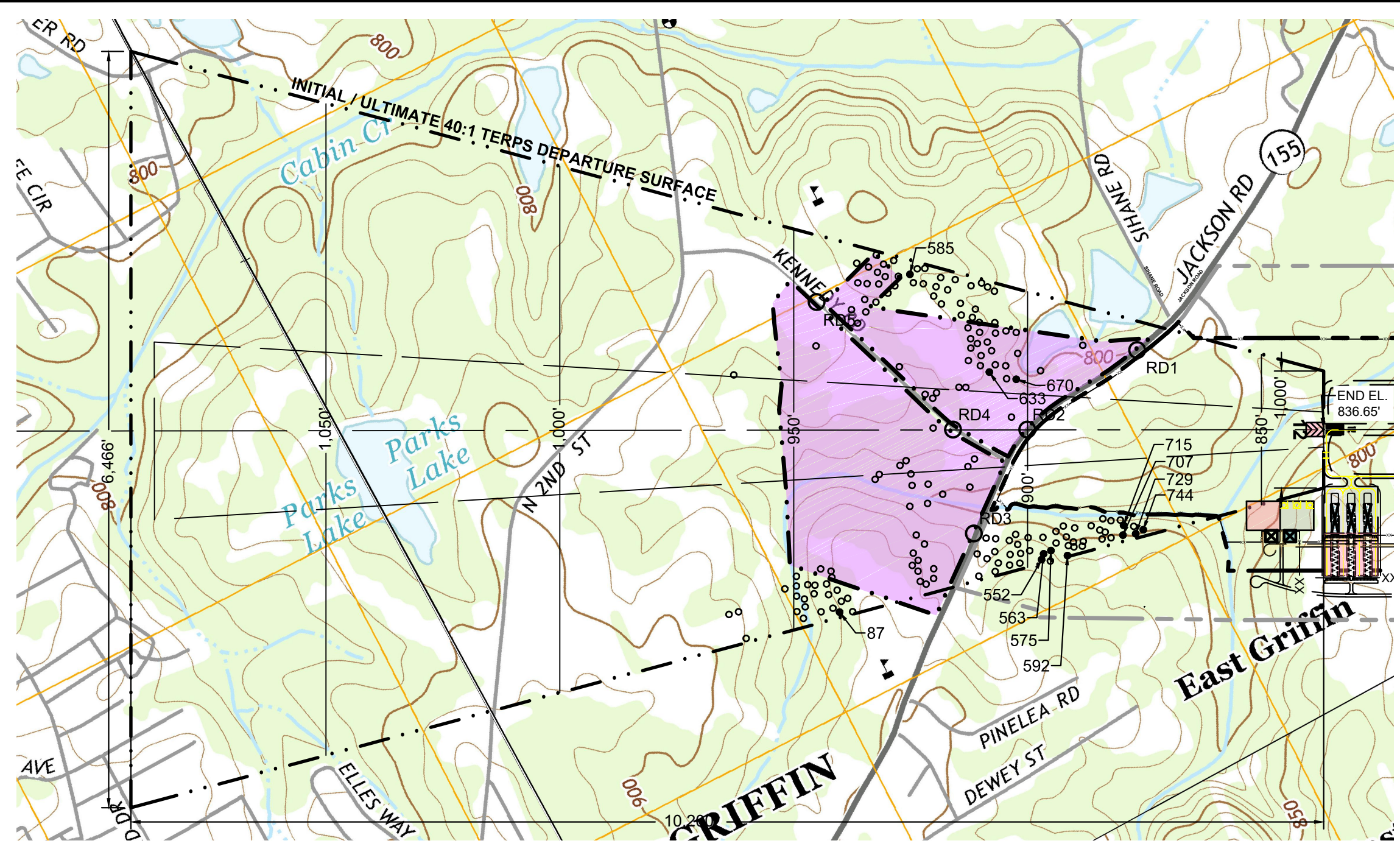
REVISIONS

No.	Description	Date	By

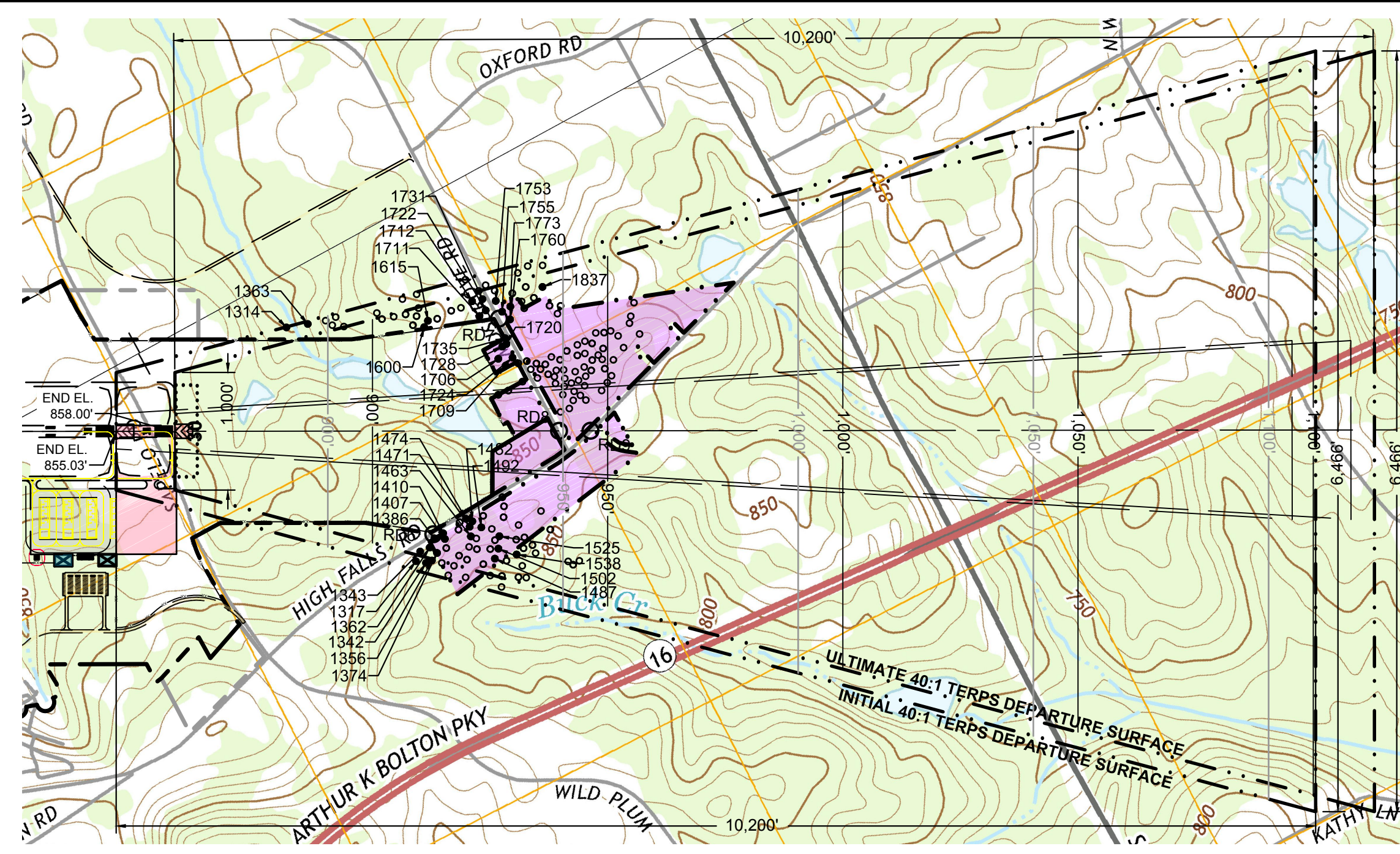
Project Name:
AIRPORT LAYOUT PLAN

Drawing Name:
DEPARTURE SURFACE DRAWING

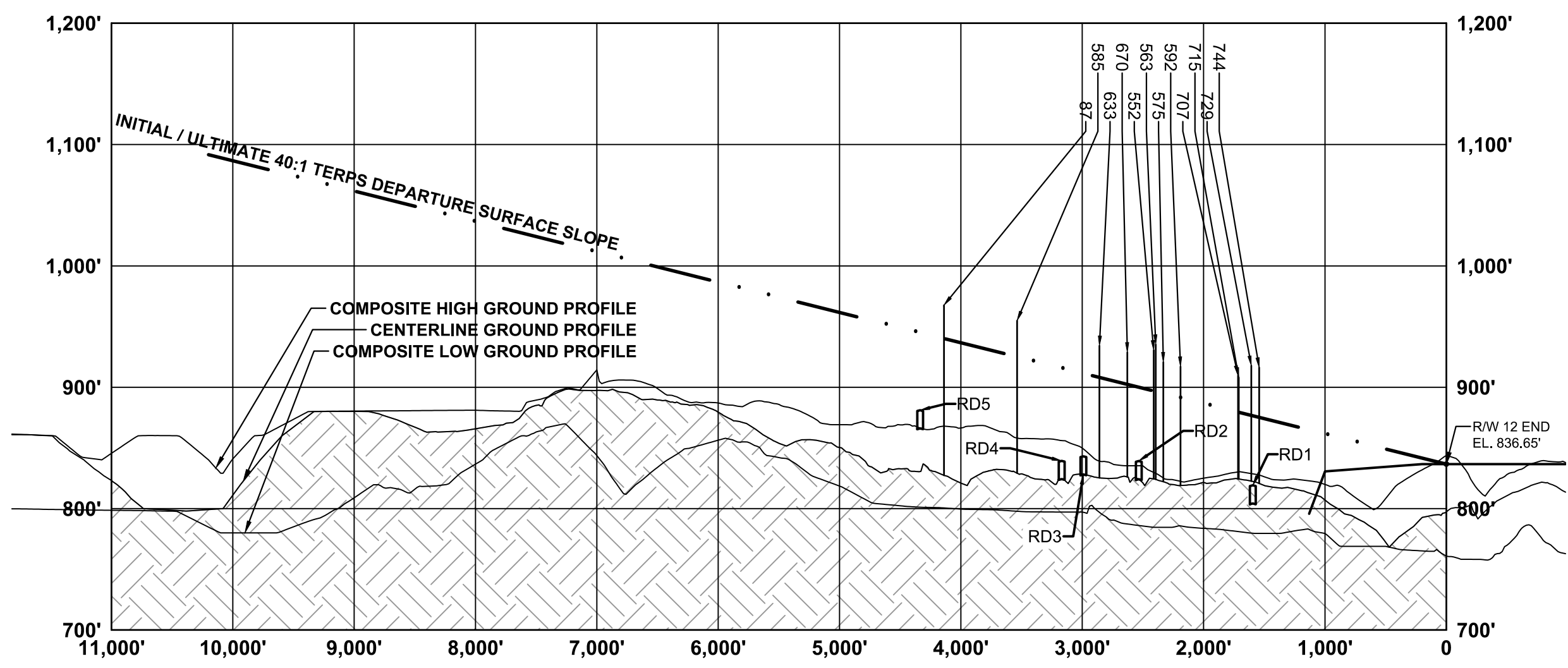
AIP Project Number:
Autocad Drawing Reference:
Date: **AUGUST 2017** Division: **PLANNING**
Scale: **HORIZONTAL: 1" = 1,000'** Drawing Number: **12**
VERTICAL: 1" = 100'



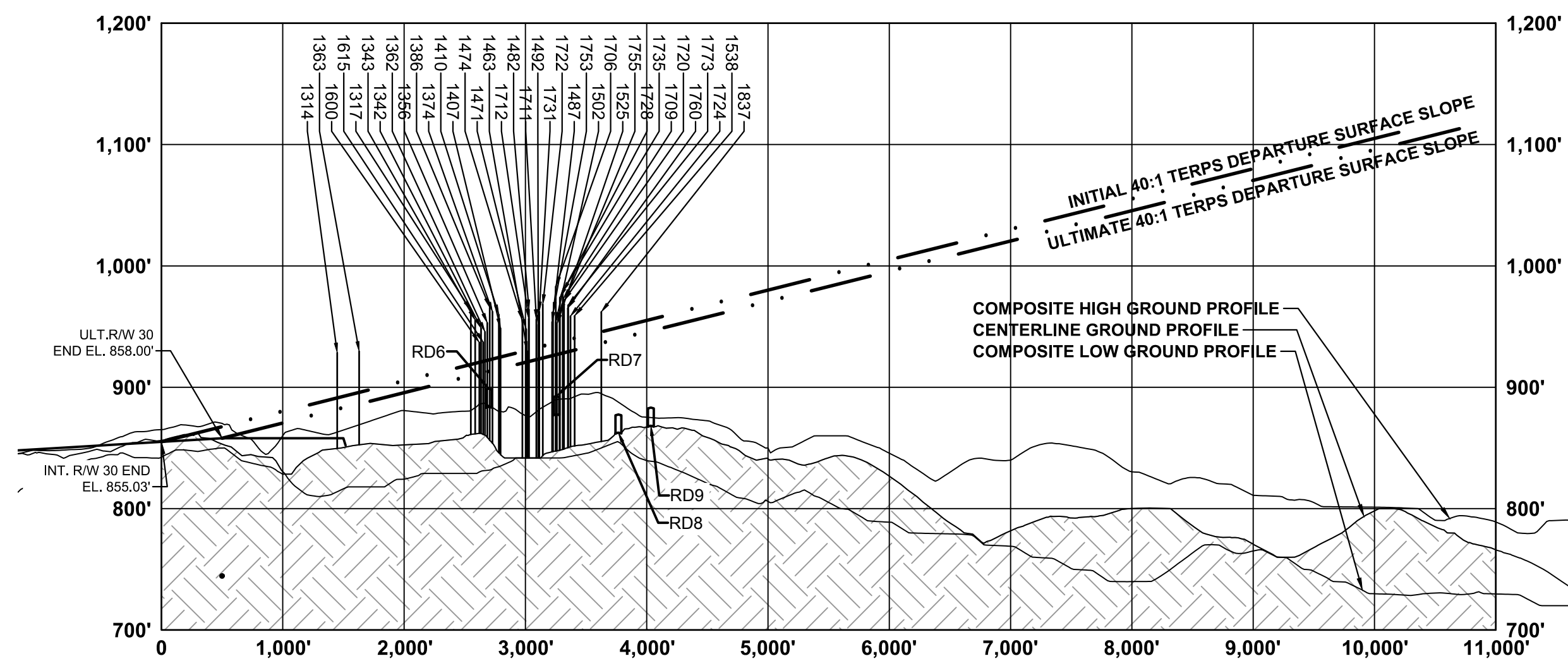
PLAN VIEW RUNWAY 30 DEPARTURE SURFACE



PLAN VIEW RUNWAY 12 DEPARTURE SURFACE



PROFILE VIEW RUNWAY 30 DEPARTURE SURFACE



PROFILE VIEW RUNWAY 12 DEPARTURE SURFACE

NOTE:
REFER TO SHEET NUMBERS 14 AND 16 FOR
RUNWAY 12 AND RUNWAY 30 DEPARTURE SURFACE
OBSTRUCTION DATA

LEGEND

DESCRIPTION	INITIAL	ULTIMATE
PROPERTY LINE	---	---
EASEMENT	---	SAME
RUNWAY SAFETY AREA	---	---
RUNWAY OBJECT FREE AREA	---	---
< 25' DEPARTURE SURFACE PENETRATIONS	o	SAME
> 25' DEPARTURE SURFACE PENETRATIONS	•	SAME

